

uvex



Safety Footwear

protecting people

Safety Footwear

Areas of application: light · medium · heavy



light
areas of application

'Light' covers all areas of application where work is primarily carried out indoors and there are no significant demands on the physical properties of the outsole. Examples include assembly workplaces, as well as storage and logistics areas.



medium
areas of application

'Medium' applications usually take place both indoors and outdoors, with the outsole needing to be significantly more robust. Typical users include manual labourers, public sector employers and people working the chemical industry.



heavy
areas of application

'Heavy' applications involve external influences that place extensive demands on the shoe, its durability and stability. They are usually found in heavy mechanical engineering and in the construction industry, especially in building and civil engineering.

Safety Footwear

Pictogram overview

climazone

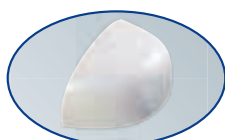
uvex climazone is an innovative head-to-toe climate control system. uvex has combined its expertise in research and product development with the use of intelligent materials and processing technologies to develop a unique range of climate-optimising safety products, such as safety footwear. More details page 258.



ESD indicates the controlled discharge of electrostatic energy that can cause damage to electronic components in the event of uncontrolled discharge or trigger explosions. Safety footwear marked with the ESD symbol meets the ESD specification with a volume resistance of less than 35 megaohms. For a detailed explanation, see page 264.



Certain materials such as silicones, plasticisers and similar substances can impair the lacquer wetting of surfaces. The sole materials of footwear with this symbol has been tested accordingly by the automotive industry and approved.



uvex xenova® system

The uvex xenova® system is a comprehensive, completely metal-free safety system to protect the foot inside safety footwear.

Latest generation of uvex xenova® toe cap: the metal-free cap fits perfectly without pressure points. This delivers increased wearer comfort while kneeling and banging against obstacles.

uvex xenova® penetration-resistant midsole: the metal-free flexible, penetration-resistant xenova® midsole exactly matches the dimensions of the insole. It covers 100% of the sole area and protects against cold getting inside, which adds to wearing comfort.



uvex medicare

uvex medicare designates safety footwear that has been certified for orthopaedic adjustment and orthopaedic shoes in accordance with German Institute for Occupational Health and Safety (DGUV) regulation 112-191 and/or Austrian ÖNORM Z 1259.



uvex construction

Especially suited to applications in the construction industry

BOA®

Delivering fit solutions purpose-built for performance, the Boa® Fit System is featured in products across sports, occupational safety and medical applications. Detailed explanation on page 259.



uvex women's and men's last

To ensure a proper fit for both men and women the last should vary according to the intended gender. Safety footwear marked with these symbols have been produced in sizes 35-40 using a last which mimics the contours of the female foot.



uvex climazone

Innovative climate management

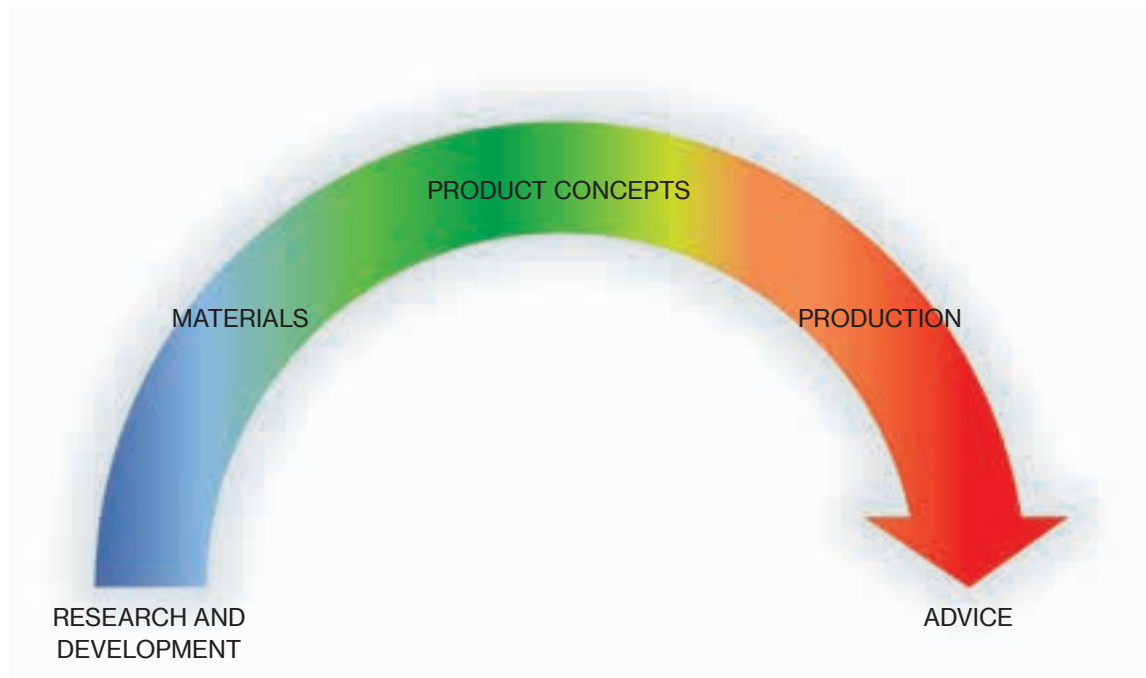
To effectively improve the climate in occupational safety equipment, it is essential to analyse relevant factors to investigate and understand how they work together.

uvex has been researching the impact of climate issues for many years. In collaboration with well-known institutes such as PFI (Pirmasens Testing and Research Institute), the Kaiserslautern Technical College and the Hohenstein Institute, testing methods and devices have been developed to enable a comprehensive and proven measurement of climate characteristics.

Are your feet too hot or too cold? Is excess perspiration making you feel unwell? Effective temperature control is particularly important in the field of safety footwear.

The comfort factor with uvex climazone:

- Regulates individual body temperature
- Work with a lasting sense of well-being
- Longer-lasting performance
- Optimum wearer comfort in any situation



Our partners in research and technology



uvex climazone is the innovative head-to-toe climate-control system. uvex has combined its expertise in research and development with the use of intelligent materials and processing technology to create a unique range of climate-optimising products.

climazone

All products which have the innovative climate management features carry the uvex climazone symbol throughout this catalogue.



During intense physical activity, sweat production by the feet can fill a glass of water by the end of the day. uvex climazone wicks this moisture away reducing the risk of discomfort caused by blisters, fungal infections or even mild hypothermia and damage the footwear or socks.

The boa® fit system.

Delivering fit solutions purpose-built for performance, the Boa® Fit System is featured in products across industries (in medical, sports and workwear) and consists of three integral parts: a micro-adjustable dial, a super-strong lightweight lace and low friction lace guides. Each unique configuration is engineered for effortless precision delivering a connected, fast, customized and durable fit, and is backed by The Boa Guarantee.

Dial A dial that adjusts fit with precision click by click.

Lace Lightweight, super-strong lace, expertly configured for comfort and performance.

Guides Low-friction guides to ensure a smooth closure, every time.

The boa® benefits.

Fit to perform.

Dial in your perfect fit for custom comfort that's consistent all-day, the micro-adjustable Boa Fit System is fast, easy and built to perform, so you can always get the job done.

Confidence in all conditions.

Designed to reduce contamination by shedding ice, dirt, oil and other elements, the Boa Fit System will work as hard as you do, so you can stay focused and confident in any environment – without ever having to remove your gloves.

Stay secure and focused.

Boa's precision engineered laces are contained inside the system, out of your way and out of machinery.

Built for life.

When we say tough, we mean it. Engineered with ultra-durable materials, the Boa Fit System is extensively tested in the harshest conditions.

Fit for life with boa®.

The Boa® Fit System dials and laces are guaranteed for the lifetime of the product on which they are integrated.

How it works.



push in to engage



turn to tighten



pull up for quick release

Models equipped with the Boa® Fit System can be found on pages 273, 278, 287, 309, 311, 324, 335.

Website



uvex i-gonomics

Foot protection with measurably greater relief

uvex i-gonomics redefines wearer comfort: The innovative product system boasts an ergonomic fit, lightweight design and ideal climate characteristics. This makes our safety shoes more comfortable to wear and gives them optimal flexibility – so maximum performance can be achieved at all times, even under extreme conditions.



uvex 1 G2

The new uvex 1 G2 collection is the next generation of the successful uvex 1 series

The uvex i-PUREnrj two-layer outsole is made of a newly developed type of polyurethane. The midsole has an energy absorption of 40.8 joules, i.e. double the standard, while providing energy recovery of around 66% in the heel* and 59% in the forefoot*.

The tread of the outsole has been specially adapted to working on industrial floors, is shaped in accordance with the latest findings from biomechanical research and offers maximum slip resistance. All this combined with the proven collar concept ensure a high RI index of 4.03.

* Test report no: L190714889 CTC Lyon – 22/08/2019



Scan for more information about the uvex i-gonomics product system.

force 4.2

Test method:
Energy absorption in the heel area

Test result:
Energy absorption = 40.8 J (IV 4.2)

Reduced strain for more comfortable standing and walking



weight 3.0

Test method:
Weighing the shoe

Test result:
Product weight = 510 g (IV 3.0)

**Lightweight fit,
reduced fatigue**



Relief index calculation:

The relief index is calculated from the average of the three index values (IV) – force, weight and climate – and ranges from 0 (= poor) to 5 (= optimum).



clima 4.9

Test method:
Measuring the microclimate in the shoe

Test result:
Absolute humidity = 20.23 g/kg air (IV 4.9)

**Less perspiration,
drier feel, increased hygiene**



Safety Footwear

Standards · Labels

Labelling

Manufacturer's identification mark	uvex	CE	CE symbol
Manufacturer's type designation	91 8543.8 42		Size
Number of European standard	EN ISO 20345:2011	07/2019	Date of manufacture
Symbol for protection	S1 SRC		Article number
	Made/Produziert in Italy for/für UVEX ARBEITSSCHUTZ GMBH Würzburger Str. 181–189 D-90766 Fürth, Germany		Postal address of the manufacturer

Footwear symbols for industrial usage

Basic requirements/additional requirements/categories e.g. for leather shoes	Safety footwear EN ISO 20345	Occupational footwear EN ISO 20347
Basic requirements for shoes and impact resistance of toecaps	SB 200 Joule	OB No requirement
Additional requirements: Closed seat region Antistatic properties Energy absorption of seat region Fuel resistance	S1	O1 (without resistance to fuels)
Additional requirements: as above, plus water penetration and absorption	S2	O2
Additional requirements: as above, plus Penetration resistance* Cleated outsole	S3	O3
Basic requirements/additional requirements/categories e.g. for shoes made from PVC or PU		
Basic requirements for shoes and impact resistance of toecaps	SB 200 Joule	OB No requirement
Additional requirements: Antistatic properties Energy absorption of seat region Fuel resistance Penetration resistance* Cleated outsole	S5	O5
The choice of a particular shoe depends on the type of occupational risk. As with all footwear, additional requirements may exist (e.g. in terms of heat and cold insulation, penetration resistance or electrical resistance via ESD). These shoes are then marked accordingly. The testing principles for all basic and additional requirements are specified in EN ISO 20344.		

One of the three following requirements must be met and labelled in the shoe.			
Label	Characteristics tested	Test conditions	Friction coefficient
SRA	Slip resistance on ceramic tile floors with sodium lauryl sulfate solution (SLS)	Forward slip of the heel Forward slip on a flat surface	No less than 0.28 No less than 0.32
SRB	Slip resistance on steel floors with glycerol	Forward slip of the heel Forward slip on a flat surface	No less than 0.13 No less than 0.18
SRC	Slip resistance on ceramic tile floors with sodium lauryl sulfate solution and on steel floors with glycerol	Includes all test conditions cited under a. and b.	

Safety Footwear

Standards · Labels

Additional requirements for special applications with corresponding symbols

SYMBOL	RISK COVERED	EN ISO 20345					EN ISO 20347			
		SB	S1	S2	S3	S5	OB	O1	O2	O3
–	Basic									
P	Penetration resistance*									
A	Antistatic footwear									
E	Energy absorption around heel									
HI	Heat insulation									
CI	Cold insulation									
WRU	Water resistance of upper									
HRO	Heat resistance of outsole (+300 °C/min)									
WR	Whole shoe waterproof									
M	Metatarsal protection									
FO	Resistance to oil and petrol									

Meets the specified requirement

Requirement can be met but is not stipulated

* Penetration resistance

Warning – Please note that the penetration resistance of this footwear has been measured in the laboratory using a truncated nail of diameter 4.5 mm and a force of 1100 N. Higher forces or nails of smaller diameter will increase the risk of penetration occurring. In such circumstances alternative preventative measures should be considered.

Two generic types of penetration resistant insert are currently available in PPE footwear. These are metal types and those from non-metal materials. Both types meet the minimum requirements for penetration resistance of the standard marked on this footwear but each has different additional advantages or disadvantages including the following:

Metal: Is less affected by the shape of the sharp object/hazard (i.e. diameter, geometry, sharpness) but due to shoemaking limitations does not cover the entire lower area of the shoe.

Non-metal: May be lighter, more flexible and provide greater coverage area when compared with metal but the penetration resistance may vary more depending on the shape of the sharp object/hazard (i.e. diameter, geometry, sharpness).

For more information about the type of penetration resistant insert provided in your footwear please contact the manufacturer or supplier detailed on these instructions.



Safety Footwear

ESD

Electrostatic

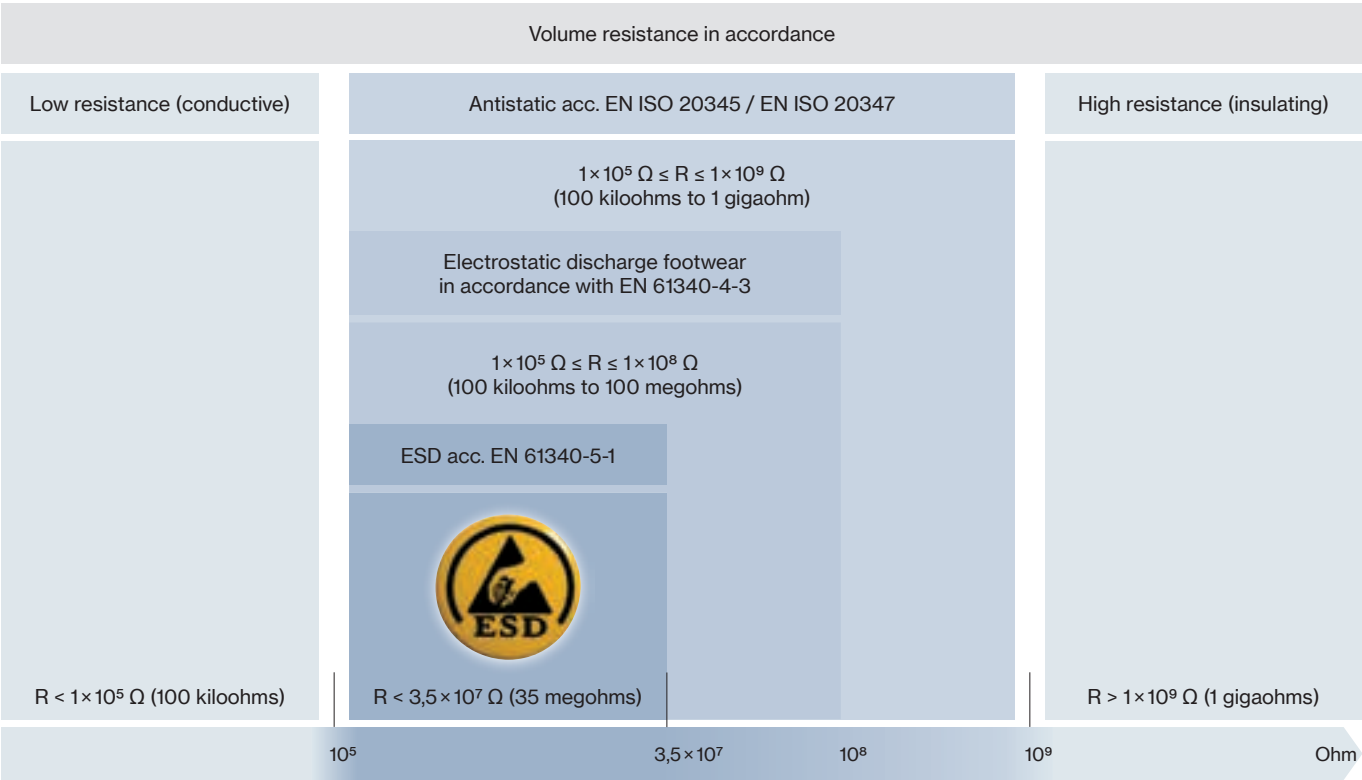
Controlling unwelcome electrostatic charge is becoming an increasingly important role in industry, as more and more employees come into contact with processes, materials or objects which are sensitive to electro static charge. It is often necessary to use safety footwear as part of a system to conduct electrostatic charge in such workplaces.

Independent of various measuring methods, volume resistance between 100 kilohms (1.0×10^5 ohms) and 35 megohms (3.5×10^7 ohms) is still required to fulfil the various relevant norms (e. g. EN ISO 20345, EN 61340).

All ESD-certified products in this catalogue feature the ESD symbol.



These products are also suitable in accordance with the specification for conductive footwear in the German Technical Rules for Hazardous Substances (TRGS) 727 “Avoiding risks of ignition resulting from electrostatic charges.”



R = electrical resistance

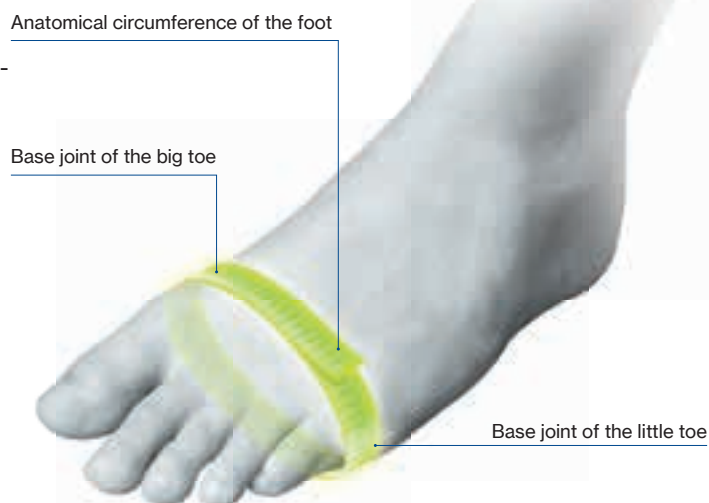
Safety Footwear

uvex multiple fit system

uvex multiple fit system

As part of the safety footwear multiple fit system, a footwear style is offered in the same size but in a range of different fits. The different fits are based on the measurement of the widest part of the foot. A measurement can be taken of either the circumference of the foot at the base joint of the big toe and the base joint of the little toe or alternatively the width of the foot at this point (see opposite).

The classification of sizes and the corresponding values are detailed in the table below (all measurements in mm):



uvex shoe size	Foot length	Width 10 Circum.	Width 11 (standard) Circum.	Width 12 Circum.	Width 14 Circum.
35	217	216.5	222.5	228.5	240.5
36	225	221	227	233	245
37	232	225.5	231.5	237.5	249.5
38	240	230	236	242	254
39	247	234.5	240.5	246.5	258.5
40	255	239	245	251	263
41	262	243.5	249.5	255.5	267.5
42	270	248	254	260	272
43	277	252.5	258.5	264.5	276.5
44	285	257	263	269	281
45	292	261.5	267.5	273.5	285.5
46	300	266	272	278	290
47	307	270.5	276.5	282.5	294.5
48	315	275	281	287	299
49	322	279.5	285.5	291.5	303.5
50	330	284	290	296	308
51	337	288.5	294.5	300.5	312.5
52	345	293	299	305	317

All measurements in mm.

The required width can be determined from the table according to the wearer's foot length. The following table shows the corresponding uvex article number for the different widths:

► For any questions or queries, please contact uvex customer service at safety@uvex.de.

uvex article number	Width	Certification	Size range
XXXX1	10	EN ISO 20345: 2011 S1 P or S3	depending on model
XXXX2	11 (standard)		
XXXX3	12		
XXXX4	14		
XXXX7	10	EN ISO 20345: 2011 S1 or S2	
XXXX8	11 (standard)		
XXXX9	12		
XXXX0	14		



uvex size advisor app

When choosing safety shoes, it is especially important to choose the right size in order to benefit fully from their protective function. In addition, only a perfect fit ensures lasting wearer comfort. However, size specifications may vary depending on the manufacturer. With the uvex size advisor app you can determine the right uvex shoe size and width to ensure the perfect fit and most comfortable shoe for your working day.



Science. Not Fiction.

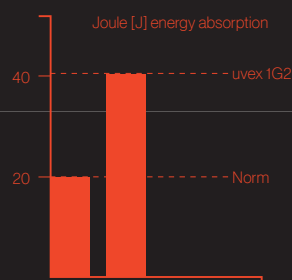
uvex i-PUREnrj Technology

The future is full of energy with the pioneering uvex 1 G2 safety shoes. uvex's innovative new polyurethane sole technology – uvex i-PUREnrj – returns the landing energy over the entire sole unit back to the wearer and redefines shock absorption and stability. This makes every day full of energy, with noticeably greater comfort and significantly lower fatigue in the feet.

Cushioning underneath the heel

100%

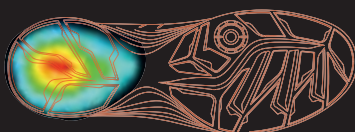
higher energy absorption than the standard EN ISO 20345:2011 specifies.



High energy return

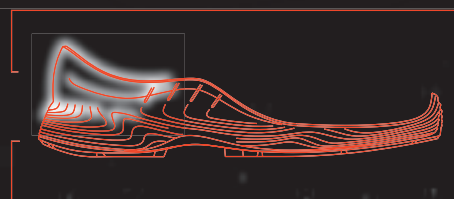
66%

Energy return underneath the heel.*

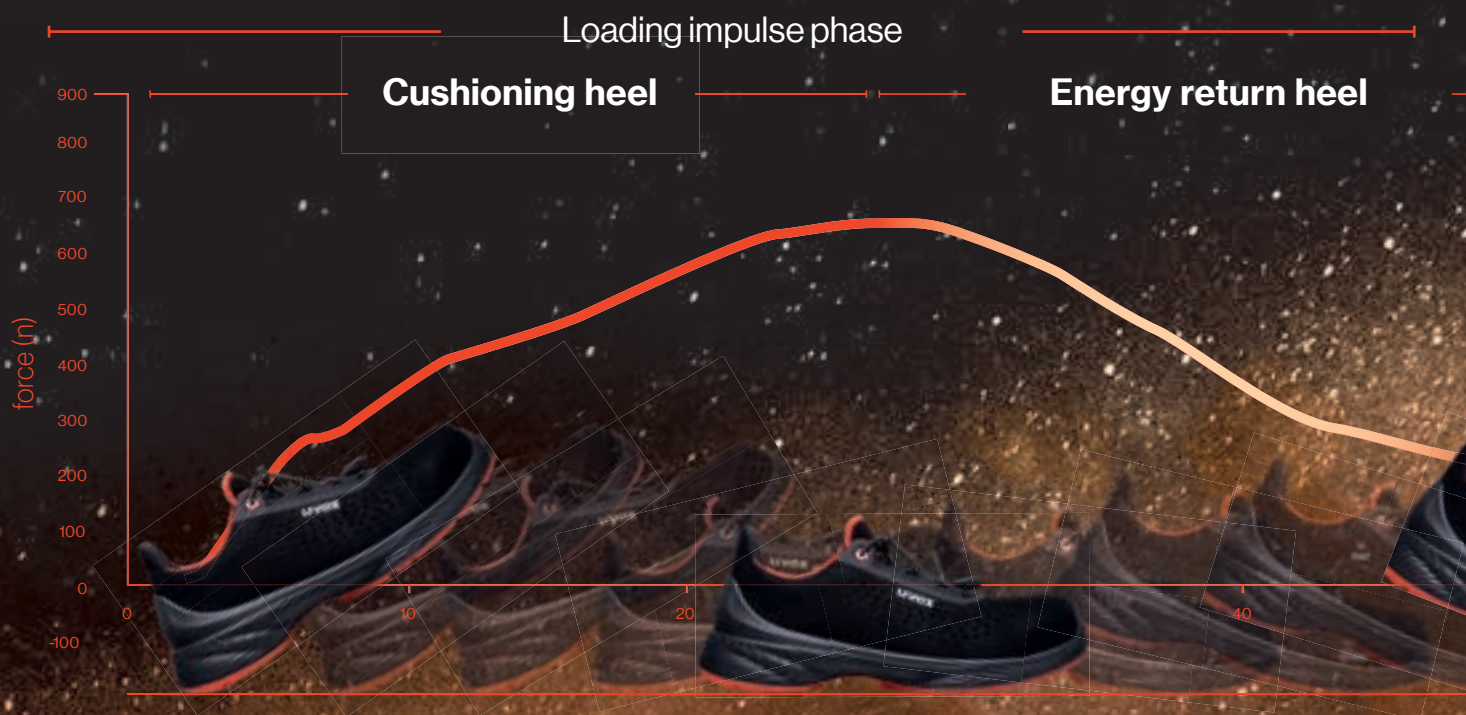


**More Stability.
Reduced Risk of Injuries.
More Safety.**

Excellent stability and secure fit in the shoe due to foamed heel basket and adapted density of the uvex i-PUREnrj technology. Reduces risk of injury through bending over.



Understand walking





High energy return

59%

Energy return in the forefoot area.*

Cushioning after 1000 km

29%

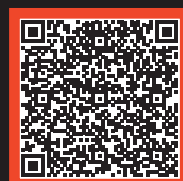
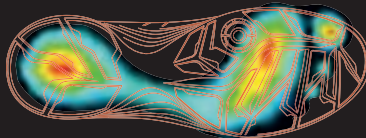
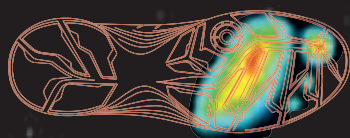
higher cushioning after 1000 km use compared to standard polyurethane soles.*

Less fatigue. More comfort.
More performance.

21%

less perceived fatigue compared to standard polyurethane soles.

You can find more information at
www.uvex-safety.com/uvex1G2

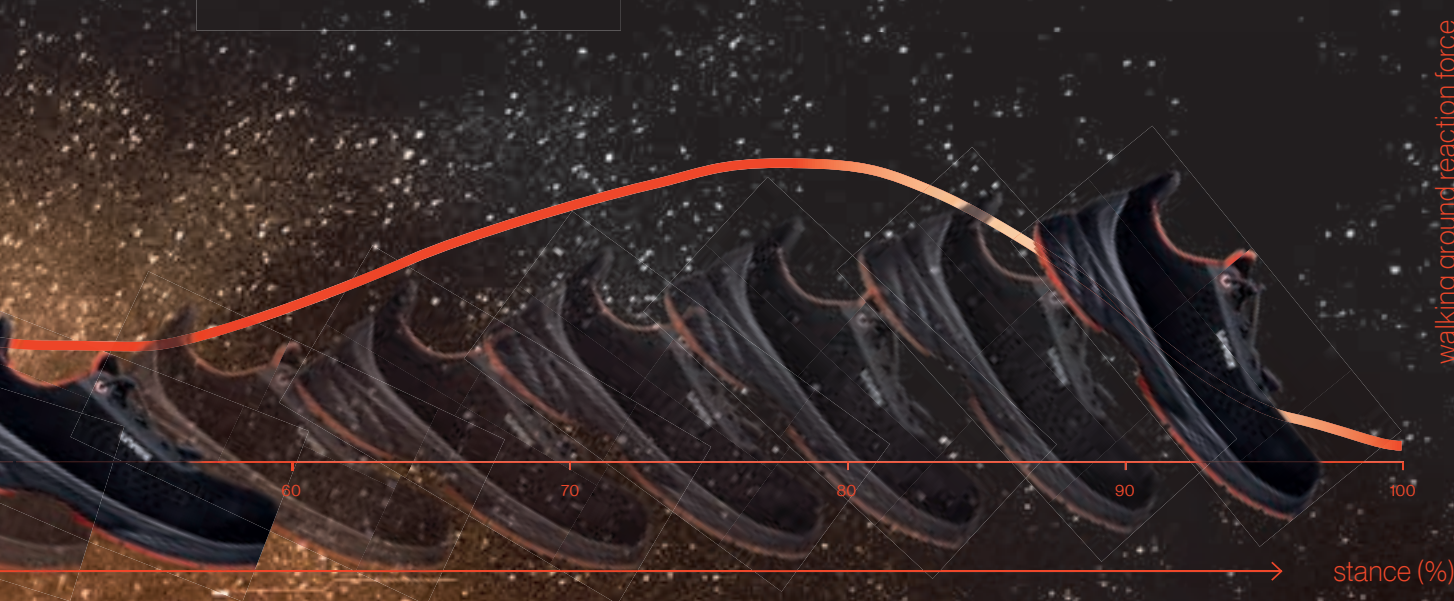


* Marked mentioned results reported in:
Test report Nr. L190714889 CTC Lyon, 22.08.2019

Propulsive impulse phase

Cushioning forefoot

Energy return forefoot



Safety Footwear

uvex 1 G2



uvex 1 G2 · Sandal S1 SRC · Perforated shoe S1 SRC · Perforated lace-up boot S1 SRC

General features:

- ultra-lightweight S1 safety sandal, perforated shoe and safety boot
- made from synthetic materials, making it suitable for people allergic to chrome
- all sole materials are free of silicone, plasticisers and other paint wetting impairment substances
- individually adjustable elastic laces for quick release, normal laces also provided (shoe), individually adjustable double hook-and-loop fastening, the upper hook-and-loop fastening can be adjusted to the ideal length for the wearer's needs (sandal)

Protection features:

- new, innovative uvex i-PUREnrj sole technology with the highest level of shock-absorbing properties at the forefoot and at the heel, excellent rebound over the entire midsole and optimal stability thanks to the foam heel basket
- meets the ESD specification with volume resistance under 35 megaohms
- new wider 100% metal-free uvex xenova® safety toe cap for more toe room and optimum fit – compact design, anatomical shape, good lateral stability and no thermal conductivity

- ergonomically designed outsole incorporates the latest biomechanical research, consisting of two layers of uvex i-PUREnrj polyurethane with excellent slip resistance. The tread is particularly suited to industrial floor surfaces

Comfort features:

- outstanding wearer comfort thanks to a newly developed last and climate-optimised, breathable materials
- virtually seam-free upper in high-tech microvelour to eliminate pressure points, perforated
- removable antistatic comfortable insole with a moisture transport system, additional shock absorption around the heel and forefoot and excellent support for the arch
- soft padding on dust tongue (shoe, boot) and collar
- sizes 35 to 40 have been produced using a women's last

Areas of application:

- light applications

uvex 1 G2	Sandal S1 SRC				Perforated shoe S1 SRC				Perforated lace-up boot S1 SRC			
Art. no.	68487	68488	68489	68480	68467	68468	68469	68460	68477	68478	68479	68470
Width	10	11	12	14	10	11	12	14	10	11	12	14
Standard	EN ISO 20345:2011 S1 SRC				EN ISO 20345:2011 S1 SRC				EN ISO 20345:2011 S1 SRC			
Upper	microvelour				microvelour				microvelour			
Lining	distance mesh lining				distance mesh lining				distance mesh lining			
Sizes	35 to 52	35 to 52	35 to 52	35 to 52	35 to 52	35 to 52	35 to 52	35 to 52	35 to 52	35 to 52	35 to 52	35 to 52
Order unit	PR	PR	PR	PR	PR	PR	PR	PR	PR	PR	PR	PR

Safety Footwear

uvex 1 G2



68497
68498
68499
68490



68507
68508
68509
68500



uvex 1 G2 · Shoe S2 SRC · Lace-up boot S2 SRC

General features:

- ultra-lightweight S2 safety shoe and safety boot
- made from synthetic materials, making it suitable for people allergic to chrome
- all sole materials are free of silicone, plasticisers and other paint wetting impairment substances
- elastic laces for quick, individual adjustment, normal laces also provided (only for safety shoe)

Protection features:

- new, innovative uvex i-PUREnrj sole technology with the highest level of shock-absorbing properties at the forefoot and at the heel, excellent rebound over the entire midsole and optimal stability thanks to the foam heel basket
- meets the ESD specification with volume resistance under 35 megaohms
- new wider 100% metal-free uvex xenova® safety toe cap for more toe room and optimum fit – compact design, anatomical shape, good lateral stability and no thermal conductivity
- ergonomically designed outsole incorporates the latest biomechanical research, consisting of two layers of uvex i-PUREnrj polyurethane with excellent slip resistance. The tread is particularly suited to industrial floor surfaces

Comfort features:

- outstanding wearer comfort thanks to a newly developed last and climate-optimised, breathable materials
- virtually seam-free upper in high-tech microvelour to eliminate pressure points, hydrophobic
- removable antistatic comfortable insole with a moisture transport system, additional shock absorption around the heel and forefoot and excellent support for the arch
- soft padding on dust tongue and collar
- sizes 35 to 40 have been produced using a women's last

Areas of application:

- light applications



uvex 1 G2	Shoe S2 SRC				Lace-up boot S2 SRC			
Art. no.	68497	68498	68499	68490	68507	68508	68509	68500
Width	10	11	12	14	10	11	12	14
Standard	EN ISO 20345:2011 S2 SRC				EN ISO 20345:2011 S2 SRC			
Upper	microvelour				microvelour			
Lining	distance mesh lining				distance mesh lining			
Sizes	35 to 52	35 to 52	35 to 52	35 to 52	35 to 52	35 to 52	35 to 52	35 to 52
Order unit	PR	PR	PR	PR	PR	PR	PR	PR

Safety Footwear

uvex 1 G2



uvex 1 G2 · Sandal S1 SRC · Perforated shoe S1 SRC · Shoe S2 SRC · Lace-up boot S2 SRC

General features:

- ultra-lightweight S1 safety sandal, perforated safety shoe, S2 safety shoe/boot
- made from synthetic materials, so suitable for people allergic to chrome
- all sole materials are free of silicone, plasticisers and other paint wetting impairment substances
- individually adjustable elastic laces for quick release, normal laces also provided (shoes), individually adjustable double hook-and-loop fastening, the upper hook-and-loop fastening can be adjusted to the ideal length for the wearer's needs (sandal)

Protection features:

- new, innovative uvex i-PUREnrj sole technology with the highest level of shock-absorbing properties at the forefoot and at the heel, excellent rebound over the entire midsole and optimal stability thanks to the foam heel basket
- ergonomically designed TPU outsole incorporates the latest biomechanical research, is highly durable and therefore offers excellent slip resistance. The tread is particularly suited to industrial floor surfaces

- meets the ESD specification with volume resistance under 35 megaohms
- new wider metal-free uvex xenova® protective toe cap for more toe room and optimum fit – compact design, anatomical shape, good lateral stability and no thermal conductivity

Comfort features:

- outstanding wearer comfort thanks to a newly developed last and climate-optimised, breathable materials
- virtually seam-free construction made from high-tech microvelour material to eliminate pressure points, perforated (S1 models) or hydrophobic (S2 models)
- removable antistatic comfortable insole with a moisture transport system, additional shock absorption around the heel and forefoot and excellent support for the arch
- soft padding on dust tongue (shoe, boot) and collar
- sizes 35 to 40 have been produced using a women's last

Areas of application:

- light applications

uvex 1 G2	Sandal S1 SRC				Perforated Shoe S1 SRC			
Art. no.	68427	68428	68429	68420	68437	68438	68439	68430
Width	10	11	12	14	10	11	12	14
Standard	EN ISO 20345:2011 S1 SRC				EN ISO 20345:2011 S1 SRC			
Upper	microvelour				microvelour			
Lining	distance mesh lining				distance mesh lining			
Sizes	35 bis 52	35 bis 52	35 bis 52	35 bis 52	35 bis 52	35 bis 52	35 bis 52	35 bis 52
Order unit	PAA	PAA	PAA	PAA	PAA	PAA	PAA	PAA

uvex 1 G2	Shoe S2 SRC				Lace-up boot S2 SRC			
Art. no.	68447	68448	68449	68440	68457	68458	68459	68450
Width	10	11	12	14	10	11	12	14
Standard	EN ISO 20345:2011 S2 SRC				EN ISO 20345:2011 S2 SRC			
Upper	microvelour				microvelour			
Lining	distance mesh lining				distance mesh lining			
Sizes	35 bis 52	35 bis 52	35 bis 52	35 bis 52	35 bis 52	35 bis 52	35 bis 52	35 bis 52
Order unit	PAA	PAA	PAA	PAA	PAA	PAA	PAA	PAA

Safety Footwear

uvex 1 G2



68341
68342
68343
68344



uvex 1 G2 · Shoe S1 P SRC

General features:

- ultra-lightweight S1 P safety shoe
- made from synthetic materials, so suitable for people allergic to chrome
- all sole materials are free of silicone, plasticisers and other paint wetting impairment substances
- elastic laces for quick, individual adjustment, normal laces also provided

Protection features:

- new, innovative uvex i-PUREnrj sole technology with the highest level of shock-absorbing properties at the forefoot and at the heel, excellent rebound over the entire midsole and optimal stability thanks to the foam heel basket
- ergonomically designed TPU outsole incorporates the latest biomechanical research, is highly durable and therefore offers excellent slip resistance. The tread is particularly suited to industrial floor surfaces
- meets the ESD specification with volume resistance under 35 megaohms
- new wider metal-free uvex xenova® protective toe cap for more toe room and optimum fit – compact design, anatomical shape, good lateral stability and no thermal conductivity
- penetration-resistant, non-metallic midsole in accordance with current safety standards, does not restrict flexibility of the shoe

Comfort features:

- outstanding wearer comfort thanks to a newly developed last and climate-optimised, breathable materials
- virtually seam-free construction made from textile material to eliminate pressure points
- removable antistatic comfortable insole with a moisture transport system, additional shock absorption around the heel and forefoot and excellent support for the arch
- soft padding on collar and tongue
- sizes 35 to 40 have been produced using a women's last

Areas of application:

- light applications

uvex 1 G2	Shoe S1 P SRC			
Art. no.	68341	68342	68343	68344
Width	10	11	12	14
Standard	EN ISO 20345:2011 S1 P SRC			
Upper	textile			
Lining	distance mesh lining			
Sizes	35 to 52	35 to 52	35 to 52	35 to 52
Order unit	PR	PR	PR	PR



Safety Footwear

uvex 1 G2



68361
68362
68363
68364



68371
68372
68373
68374



uvex 1 G2 · Sandal S1 P SRC · Perforated shoe S1 P SRC

General features:

- ultra-lightweight S1 P safety sandal, perforated safety shoe
- made from synthetic materials, so suitable for people allergic to chrome
- all sole materials are free of silicone, plasticisers and other paint wetting impairment substances
- individually adjustable elastic laces for quick release, normal laces also provided (shoes), individually adjustable double hook-and-loop fastening, the upper hook-and-loop fastening can be adjusted to the ideal length for the wearer's needs (sandal)

Protection features:

- new, innovative uvex i-PUREnj sole technology with the highest level of shock-absorbing properties at the forefoot and at the heel, excellent rebound over the entire midsole and optimal stability thanks to the foam heel basket
- ergonomically designed TPU outsole incorporates the latest biomechanical research, is highly durable and therefore offers excellent slip resistance. The tread is particularly suited to industrial floor surfaces
- meets the ESD specification with volume resistance under 35 megaohms

- new wider metal-free uvex xenova® protective toe cap for more toe room and optimum fit – compact design, anatomical shape, good lateral stability and no thermal conductivity
- penetration-resistant, non-metallic midsole in accordance with current safety standards, does not restrict flexibility of the shoe

Comfort features:

- outstanding wearer comfort thanks to a newly developed last and climate-optimised, breathable materials
- virtually seam-free construction made from high-tech microvelour material to eliminate pressure points, perforated
- removable antistatic comfortable insole with a moisture transport system, additional shock absorption around the heel and forefoot and excellent support for the arch
- soft padding on collar and tongue
- sizes 35 to 40 have been produced using a women's last

Areas of application:

- light applications

uvex 1 G2	Sandal S1 P SRC				Perforated shoe S1 P SRC			
Art. no.	68361	68362	68363	68364	68371	68372	68373	68374
Width	10	11	12	14	10	11	12	14
Standard	EN ISO 20345:2011 S1 P SRC				EN ISO 20345:2011 S1 P SRC			
Upper	microvelour				microvelour			
Lining	distance mesh lining				distance mesh lining			
Sizes	35 to 52	35 to 52	35 to 52	35 to 52	35 to 52	35 to 52	35 to 52	35 to 52
Order unit	PR	PR	PR	PR	PR	PR	PR	PR

Safety Footwear

uvex 1 G2



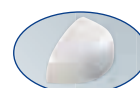
68381
68382
68383
68384



68401
68402
68403



68391
68392
68393
68394



climazone BOA®

uvex 1 G2 · Shoe S3 SRC · Lace-up boot S3 SRC

General features:

- ultra-lightweight S3 safety shoe, safety shoe/boot
- made from synthetic materials, so suitable for people allergic to chrome
- all sole materials are free of silicone, plasticisers and other paint wetting impairment substances
- individually adjustable elastic laces for quick release, normal laces also provided (68381 to 68384)
- Boa® Fit System (consisting of a micro-adjustable dial, super-strong lightweight laces and low friction lace guides) engineered to optimise fit and provide precision, adaptability, and control (68401 to 68403)

Protection features:

- new, innovative uvex i-PUREnrj sole technology with the highest level of shock-absorbing properties at the forefoot and at the heel, excellent rebound over the entire midsole and optimal stability thanks to the foam heel basket
- ergonomically designed TPU outsole incorporates the latest biomechanical research, is highly durable and therefore offers excellent slip resistance. The tread is particularly suited to industrial floor surfaces
- meets the ESD specification with volume resistance under 35 megaohms

- new wider metal-free uvex xenova® protective toe cap for more toe room and optimum fit – compact design, anatomical shape, good lateral stability and no thermal conductivity
- penetration-resistant, non-metallic midsole in accordance with current safety standards, does not restrict flexibility of the shoe

Comfort features:

- outstanding wearer comfort thanks to a newly developed last and climate-optimised, breathable materials
- virtually seam-free construction made from high-tech microvelour material to eliminate pressure points, hydrophobic
- removable antistatic comfortable insole with a moisture transport system, additional shock absorption around the heel and forefoot and excellent support for the arch
- soft padding on dust tongue and collar
- sizes 35 to 40 have been produced using a women's last

Areas of application:

- light applications



uvex 1 G2	Shoe S3 SRC				Shoe S3 SRC			Lace-up boot S3 SRC			
Art. no.	68381	68382	68383	68384	68401	68402	68403	68391	68392	68393	68394
Width	10	11	12	14	10	11	12	10	11	12	14
Standard	EN ISO 20345:2011 S3 SRC				EN ISO 20345:2011 S3 SRC			EN ISO 20345:2011 S3 SRC			
Upper	microvelour				microvelour			microvelour			
Lining	distance mesh lining				distance mesh lining			distance mesh lining			
Sizes	35 to 52	35 to 52	35 to 52	35 to 52	35 to 52	35 to 52	35 to 52	35 to 52	35 to 52	35 to 52	35 to 52
Order unit	PR	PR	PR	PR	PR	PR	PR	PR	PR	PR	PR

uvex 1 – redefining performance

Next Level Equipment



Outstanding flexibility. Optimum wearer comfort.

The ergonomic design of the outsole supports the natural movement and flexibility of the feet.

High abrasion-resistant TPU sections ensure secure stepping and rolling of the foot, which helps prevent accidents.

Ideal shape around the joints for optimal torsion and good flexibility.

Self-cleaning tread optimised for slip resistance (SRC marking).



Jointed insert for securely climbing ladders.

Pivot point reduces pressure on joints when twisting and turning.



Lightweight construction. Reduced fatigue.

Omit but don't miss out. A lower weight reduces strain on the body and reduces the risk of injury and wear. This is evident in the low weight design principle of the uvex 1 safety shoes. As the lightest uvex shoe in its class, the uvex 1 is approximately 100g lighter than uvex's bestseller the uvex motion style.



100% more shock absorption. Comfort in 3 dimensions.

The uvex 1 multilayer shock absorption system comprising a double-layered uvex 1 PU outsole and comfort insole with optimum shock absorption in the heel and the front of the foot helps protect the musculoskeletal system. The energy absorption in the heel is twice that required by EN ISO 20345. Pure walking comfort.



Outstanding stability. Reliable support and safety.

Consistent stability is essential for secure, sure-footedness and accident-free working. The visible external heel basket which is integrated into the sole ensures stability and offers additional side impact protection. The 'x-tended' support model offers additional sideways support and enhanced protection against ankle twisting and impact. Both sole versions securely enclose the foot, without limiting flexibility.



uvex monoskin shaft design. Pressure-free, comfortable fit.

The completely metal-free uvex monoskin upper shaft made from high-tech microfibre ensures outstanding wearer comfort without pressure points and the virtually seamless construction offers extended product life.

The uvex 1 safety footwear supports the natural movement of the whole body, reducing pressure and strain while maximising comfort. Continuous product development is carried out on the basis of the latest physiological research and technology, ensuring maximum performance with quantifiable benefits.

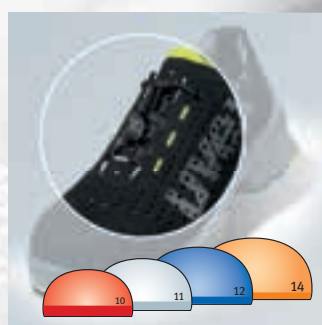


100% metal-free



Orthopaedic solutions
according to German
DGUV 112-191 and Austrian
ÖNORM Z1259

climazone



Anatomically designed for optimum comfort and fit.

- flexible multiple width system for reliable support and comfort
- the flexible uvex multiple width system with widths 10-14** provides optimum fit
- individually adjustable quick-lace system (IAS)**
- anatomically designed toe cap for total safety
- use of a specially designed women's last for the uvex 1 models in sizes 35 to 40



uvex climazone standard. Temperature and climate control.

Large perforations, ultra breathable high-tech-micro velour upper and distance mesh lining material together with a comfortable insole with moisture control system prevents the build-up of heat and reduces sweat.

* Formerly known as German BGR 191 ** only for specific models



Safety Footwear

uvex 1



85427
85428
85429
85420



85437
85438
85439
85430



Focus Open 2013
Silver



reddot design award
winner 2013



DESIGNPREIS
DER
BUNDESREPUBLIK
DEUTSCHLAND
2014
NOMINIERT



uvex 1 • Sandal S1 SRC • Perforated shoe S1 SRC

General features:

- ultra low weight, versatile S1 safety sandal and perforated safety shoe
- made from synthetic materials, so suitable for people allergic to chrome
- all sole materials are free of silicones, plasticisers and other paint wetting impairment substances
- two adjustable hook-and-loop straps (sandal) or elastic laces for quick, individual adjustment; normal laces also provided (shoe)

Protection features:

- meets the ESD specification with volume resistance under 35 megaohms
- 100% metal-free uvex xenova® toe cap – compact design, anatomical shape, good lateral stability, no thermal conductivity
- ergonomically designed outsole made from dual density polyurethane with excellent slip resistance

Comfort features:

- outstanding wearer comfort results from a newly developed last and climate-optimised, breathable materials
- virtually seam-free construction made from high-tech microvelour material to eliminate pressure points
- removable antistatic comfortable insole, with a moisture transport system and additional shock absorption around the heel and forefoot
- soft padding on collar and tongue
- sizes 35 to 40 have been produced using a women's last

Areas of application:

- light applications

uvex 1 Sandal S1 SRC				
Art. no.	85427	85428	85429	85420
Width	10	11	12	14
Standard	EN ISO 20345:2011 S1 SRC			
Upper	microvelour			
Lining	distance mesh lining			
Sizes	35 to 52	35 to 52	35 to 52	35 to 52
Order unit	PR	PR	PR	PR
uvex 1 Perforated shoe S1 SRC				
Art. no.	85437	85438	85439	85430
Width	10	11	12	14
Standard	EN ISO 20345:2011 S1 SRC			
Upper	microvelour			
Lining	distance mesh lining			
Sizes	35 to 52	35 to 52	35 to 52	35 to 52
Order unit	PR	PR	PR	PR

Safety Footwear

uvex 1



85447
85448
85449
85440



85457
85458
85459
85450



climazone

uvex 1 • Shoe S2 SRC • Lace-up boot S2 SRC

General features:

- ultra low weight, versatile S2 safety shoe/boot
- made from synthetic materials, so suitable for people allergic to chrome
- all sole materials are free of silicones, plasticisers and other paint wetting impairment substances
- elastic laces for quick, individual adjustment, normal laces also provided (shoe)

Protection features:

- meets the ESD specification with volume resistance under 35 megaohms
- 100% metal-free uvex xenova® toe cap – compact design, anatomical shape, good lateral stability, no thermal conductivity
- ergonomically designed outsole made from dual density polyurethane with excellent slip resistance

Comfort features:

- outstanding wearer comfort results from a newly developed last and climate-optimised, breathable materials
- virtually seam-free construction made from high-tech microvelour material to eliminate pressure points
- removable antistatic comfortable insole, with a moisture transport system and additional shock absorption around the heel and forefoot
- soft padding on collar and dust tongue
- sizes 35 to 40 have been produced using a women's last

Areas of application:

- light applications

uvex 1 Shoe S2 SRC				
Art. no.	85447	85448	85449	85440
Width	10	11	12	14
Standard	EN ISO 20345:2011 S2 SRC			
Upper	microvelour			
Lining	distance mesh lining			
Sizes	35 to 52	35 to 52	35 to 52	35 to 52
Order unit	PR	PR	PR	PR
uvex 1 Lace-up boot S2 SRC				
Art. no.	85457	85458	85459	85450
Width	10	11	12	14
Standard	EN ISO 20345:2011 S2 SRC			
Upper	microvelour			
Lining	distance mesh lining			
Sizes	35 to 52	35 to 52	35 to 52	35 to 52
Order unit	PR	PR	PR	PR

Safety Footwear

uvex 1



65657
65658
65659



65667
65668
65669



uvex 1 - Perforated shoe S1 SRC - Shoe S2 SRC

- General features:
- ultra-lightweight, versatile and perforated S1 safety shoe and S2 safety shoe
 - made from synthetic materials, so suitable for people allergic to chrome
 - all sole materials are free of silicones, plasticisers and other paint wetting impairment substances
 - Boa® Fit System (consisting of a micro-adjustable dial, super-strong lightweight laces and low friction lace guides) engineered to optimise fit and provide precision, adaptability, and control
- Protection features:
- meets the ESD specification with volume resistance under 35 megaohms
 - 100% metal-free uvex xenova® toe cap – compact design, anatomical shape, good lateral stability, no thermal conductivity
 - ergonomically designed outsole made from dual density polyurethane with excellent slip resistance

- Comfort features:
- outstanding wearer comfort results from a newly developed last and climate-optimised, breathable materials with perforation (S1 model)
 - virtually seam-free construction made from high-tech microvelour material to eliminate pressure points
 - removable antistatic comfortable insole, with a moisture transport system and additional shock absorption around the heel and forefoot
 - soft padding on the tongue (S1 shoe) or dust tongue (S2 shoe) and collar
 - sizes 35 to 40 have been produced using a women's last
- Areas of application:
- light applications

uvex 1	Perforated shoe S1 SRC			Shoe S2 SRC		
Art. no.	65657	65658	65659	65667	65668	65669
Width	10	11	12	10	11	12
Standard	EN ISO 20345:2011 S1 SRC			EN ISO 20345:2011 S2 SRC		
Upper	microvelour			microvelour		
Lining	distance mesh lining			distance mesh lining		
Sizes	35 to 52	35 to 52	35 to 52	35 to 52	35 to 52	35 to 52
Order unit	PR	PR	PR	PR	PR	PR

You can find more information on uvex medicare on pages 411 to 421

Safety Footwear

uvex 1



85467
85468
85469



85477
85478
85479



climazone

uvex 1 · Perforated shoe S1 SRC · Perforated lace-up boot S1 SRC

General features:

- ultra low weight and versatile perforated S1 safety shoe or boot
- made from synthetic materials, so suitable for people allergic to chrome
- all sole materials are free of silicones, plasticisers and other paint wetting impairment substances
- elastic laces for quick, individual adjustment, normal laces also provided (shoe)

Protection features:

- meets the ESD specification with volume resistance under 35 megaohms
- 100% metal-free uvex xenova® toe cap – compact design, anatomical shape, good lateral stability, no thermal conductivity
- ergonomically designed outsole made from dual density polyurethane with excellent slip resistance

Comfort features:

- outstanding wearer comfort results from a newly developed last and climate-optimised, breathable materials with perforation
- virtually seam-free construction made from high-tech microvelour material to eliminate pressure points
- removable antistatic comfortable insole, with a moisture transport system and additional shock absorption around the heel and forefoot
- soft padding on collar and tongue
- sizes 35 to 40 have been produced using a women's last

Areas of application:

- light applications



uvex 1	Perforated shoe S1 SRC			Perforated lace-up boot S1 SRC		
Art. no.	85467	85468	85469	85477	85478	85479
Width	10	11	12	10	11	12
Standard	EN ISO 20345:2011 S1 SRC			EN ISO 20345:2011 S1 SRC		
Upper	microvelour			microvelour		
Lining	distance mesh lining			distance mesh lining		
Sizes	35 to 52	35 to 52	35 to 52	35 to 52	35 to 52	35 to 52
Order unit	PR	PR	PR	PR	PR	PR

Safety Footwear

uvex 1



85307
85308
85309



85347
85348
85349
85340



climazone

uvex 1 • Sandal S1 SRC • Shoe S2 SRC

General features:

- ultra low weight, versatile S1 safety sandal or S2 safety shoe
- made from synthetic materials, so suitable for people allergic to chrome
- all sole materials are free of silicones, plasticisers and other paint wetting impairment substances
- two adjustable hook-and-loop straps (sandal)

Protection features:

- meets the ESD specification with volume resistance under 35 megaohms
- 100% metal-free uvex xenova® toe cap – compact design, anatomical shape, good lateral stability, no thermal conductivity
- ergonomically designed outsole made from dual density polyurethane with excellent slip resistance

Comfort features:

- outstanding wearer comfort results from a newly developed last and climate-optimised, breathable materials with perforation (sandals)
- virtually seam-free construction made from high-tech microvelour material to eliminate pressure points
- removable antistatic comfortable insole, with a moisture transport system and additional shock absorption around the heel and forefoot
- soft padding on collar and tongue (sandal) or collar and dust tongue (shoe)
- sizes 35 to 40 have been produced using a women's last

Areas of application:

- light applications

uvex 1 Sandal S1 SRC				
Art. no.	85307	85308	85309	
Width	10	11	12	
Standard	EN ISO 20345:2011 S1 SRC			
Upper	microvelour			
Lining	distance mesh lining			
Sizes	35 to 52	35 to 52	35 to 52	
Order unit	PR	PR	PR	
uvex 1 Shoe S2 SRC				
Art. no.	85347	85348	85349	85340
Width	10	11	12	14
Standard	EN ISO 20345:2011 S2 SRC			
Upper	microvelour			
Lining	distance mesh lining			
Sizes	35 to 52	35 to 52	35 to 52	35 to 52
Order unit	PR	PR	PR	PR

Safety Footwear

uvex 1


85317
85318
85319
85310

85327
85328
85329
85320


climazone

uvex 1 • Perforated shoe S1 SRC • Perforated lace-up boot S1 SRC

General features:

- ultra low weight and versatile perforated S1 safety shoe or boot
- made from synthetic materials, so suitable for people allergic to chrome
- all sole materials are free of silicones, plasticisers and other paint wetting impairment substances

Protection features:

- meets the ESD specification with volume resistance under 35 megaohms
- 100% metal-free uvex xenova® toe cap – compact design, anatomical shape, good lateral stability, no thermal conductivity
- ergonomically designed outsole made from dual density polyurethane with excellent slip resistance

Comfort features:

- outstanding wearer comfort results from a newly developed last and climate-optimised, breathable materials with perforation
- virtually seam-free construction made from high-tech microvelour material to eliminate pressure points
- removable antistatic comfortable insole, with a moisture transport system and additional shock absorption around the heel and forefoot
- soft padding on collar and tongue
- sizes 35 to 40 have been produced using a women's last

Areas of application:

- light applications



uvex 1 Perforated shoe S1 SRC

Art. no.	85317	85318	85319	85310
Width	10	11	12	14
Standard	EN ISO 20345:2011 S1 SRC			
Upper	microvelour			
Lining	distance mesh lining			
Sizes	35 to 52	35 to 52	35 to 52	35 to 52
Order unit	PR	PR	PR	PR

uvex 1 Perforated lace-up boot S1 SRC

Art. no.	85327	85328	85329	85320
Width	10	11	12	14
Standard	EN ISO 20345:2011 S1 SRC			
Upper	microvelour			
Lining	distance mesh lining			
Sizes	35 to 52	35 to 52	35 to 52	35 to 52
Order unit	PR	PR	PR	PR

Safety Footwear

uvex 1



uvex 1 · Sandal S1 SRC · Perforated Shoe S1 SRC · Perforated lace-up boot S1 SRC

General features:

- ultra-lightweight, versatile S1 safety sandal and perforated S1 safety shoe/boot
- made from synthetic materials, so suitable for people allergic to chrome
- all sole materials are free of silicones, plasticisers and other paint wetting impairment substances
- two adjustable hook-and-loop straps (sandal) or elastic laces for quick, individual adjustment; normal laces also provided (shoe)

Protection features:

- meets the ESD specification with volume resistance under 35 megaohms
- 100% metal-free uvex xenova® toe cap – compact design, anatomical shape, good lateral stability, no thermal conductivity
- ergonomically designed outsole made from dual density polyurethane with excellent slip resistance

Comfort features:

- outstanding wearer comfort results from a newly developed last and climate-optimised, breathable materials with perforation
- virtually seam-free construction made from high-tech microvelour material to eliminate pressure points
- removable antistatic comfortable insole, with a moisture transport system and additional shock absorption around the heel and forefoot
- soft padding on collar and tongue
- sizes 35 to 40 have been produced using a women's last

Areas of application:

- light applications

uvex 1	Sandal S1 SRC				Perforated Shoe S1 SRC			
Art. no.	65507	65508	65509	65500	65567	65568	65569	65560
Width	10	11	12	14	10	11	12	14
Standard	EN ISO 20345: 2011 S1 SRC				EN ISO 20345: 2011 S1 SRC			
Upper	microvelour				microvelour			
Lining	distance mesh lining				distance mesh lining			
Sizes	35 to 52	35 to 52	35 to 52	35 to 52	35 to 52	35 to 52	35 to 52	35 to 52
Order unit	PR	PR	PR	PR	PR	PR	PR	PR

uvex 1	Perforated Lace-up boot S1 SRC			
Art. no.	65537	65538	65539	65530
Width	10	11	12	14
Standard	EN ISO 20345: 2011 S1 SRC			
Upper	microvelour			
Lining	distance mesh lining			
Sizes	35 to 52	35 to 52	35 to 52	35 to 52
Order unit	PR	PR	PR	PR

Safety Footwear

uvex 1



65577
65578
65579
65570



65547
65548
65549
65540



climazone

uvex 1 • Shoe S2 SRC • Lace-up boot S2 SRC

General features:

- ultra low weight, versatile S2 safety shoe/boot
- made from synthetic materials, so suitable for people allergic to chrome
- all sole materials are free of silicone, plasticisers and other paint wetting impairment substances
- elastic laces with quick release for individual adjustment, standard laces included (shoe)

Protection features:

- meets the ESD specification with volume resistance under 35 megaohms
- 100% metal-free uvex xenova® toe cap – compact design, anatomical shape, good lateral stability, no thermal conductivity
- ergonomically designed outsole made from dual density polyurethane with excellent slip resistance

Comfort features:

- outstanding wearer comfort thanks to a newly developed last and climate-optimised, breathable materials
- virtually seam-free construction from high-tech microvelour material to eliminate pressure points
- removable antistatic comfortable insole, with a moisture transport system and additional shock absorption around the heel and forefoot
- soft padding on collar and dust tongue
- sizes 35 to 40 have been produced using a women's last

Areas of application:

- light applications



uvex 1 Shoe S2 SRC				
Art. no.	65577	65578	65579	65570
Width	10	11	12	14
Standard	EN ISO 20345:2011 S2 SRC			
Upper	microvelour			
Lining	distance mesh lining			
Sizes	35 to 52	35 to 52	35 to 52	35 to 52
Order unit	PR	PR	PR	PR
uvex 1 Lace-up boot S2 SRC				
Art. no.	65547	65548	65549	65540
Width	10	11	12	14
Standard	EN ISO 20345:2011 S2 SRC			
Upper	microvelour			
Lining	distance mesh lining			
Sizes	35 to 52	35 to 52	35 to 52	35 to 52
Order unit	PR	PR	PR	PR

Safety Footwear

uvex 1 x-tended support



85127
85128
85129



85117
85118
85119



Focus Open 2013
Silver



reddot design award
winner 2013



German
Design Award
WINNER 2015



climazone

uvex 1 x-tended support · Perforated Shoe S1 SRC

General features:

- ultra low weight and versatile perforated S1 safety shoe
- made from synthetic materials, so suitable for people allergic to chrome
- all sole materials are free of silicones, plasticisers and other paint wetting impairment substances
- elastic laces for quick, individual adjustment, normal laces also provided

Protection features:

- meets the ESD specification with volume resistance under 35 megaohms
- 100% metal-free uvex xenova® toe cap – compact design, anatomical shape, good lateral stability, no thermal conductivity
- ergonomically designed outsole made from dual density polyurethane with excellent slip resistance
- ‘x-tended’ support: medial and lateral heel support for the foot with specially designed side frame – provides additional protection from ankle twisting, stabilises and guides the foot while providing impact protection

Comfort features:

- outstanding wearer comfort results from a newly developed last and climate-optimised, breathable materials with perforation
- virtually seam-free construction made from high-tech microvelour material to eliminate pressure points
- removable antistatic comfortable insole, with a moisture transport system and additional shock absorption around the heel and forefoot
- soft padding on collar and tongue
- sizes 35 to 40 have been produced using a women’s last

Areas of application:

- light applications

uvex 1 x-tended support	Perforated Shoe S1 SRC			Perforated Shoe S1 SRC		
Art. no.	85127	85128	85129	85117	85118	85119
Width	10	11	12	10	11	12
Standard	EN ISO 20345:2011 S1 SRC			EN ISO 20345:2011 S1 SRC		
Upper	microvelour			microvelour		
Lining	distance mesh lining			distance mesh lining		
Sizes	35 to 52	35 to 52	35 to 52	35 to 52	35 to 52	35 to 52
Order unit	PR	PR	PR	PR	PR	PR

Safety Footwear

uvex 1 x-tended support



uvex 1 x-tended support · Perforated Shoe S1 P SRC

General features:

- ultra lightweight and versatile perforated S1 P safety shoe
- made from synthetic materials, so suitable for people allergic to chrome
- all sole materials are free of silicones, plasticisers and other paint wetting impairment substances
- foamed polyurethane scuffcap helps increase product life of upper
- elastic laces for quick, individual adjustment, normal laces also provided

Protection features:

- meets the ESD specification with volume resistance under 35 megaohms
- 100% metal-free uvex xenova® toe cap – compact design, anatomical shape, good lateral stability, no thermal conductivity
- ergonomically designed outsole made from dual density polyurethane with excellent slip resistance
- 'x-tended' support: medial and lateral heel support for the foot with specially designed side frame – provides additional protection from ankle twisting, stabilises and guides the foot while providing impact protection
- penetration-resistant, non-metallic midsole in accordance with the latest safety standards, does not restrict flexibility of the shoe

Comfort features:

- outstanding wearer comfort results from a newly developed last and climate-optimised, breathable materials with perforation
- virtually seam-free construction made from high-tech microvelour material to eliminate pressure points
- removable antistatic comfortable insole, with a moisture transport system and additional shock absorption around the heel and forefoot
- soft padding on collar and tongue
- sizes 35 to 40 have been produced using a women's last

Areas of application:

- light applications



uvex 1 x-tended support	Perforated Shoe S1 P SRC			Perforated Shoe S1 P SRC		
Art. no.	85141	85142	85143	85191	85192	85193
Width	10	11	12	10	11	12
Standard	EN ISO 20345:2011 S1 P SRC			EN ISO 20345:2011 S1 P SRC		
Upper	microvelour			microvelour		
Lining	distance mesh lining			distance mesh lining		
Sizes	35 to 52	35 to 52	35 to 52	35 to 52	35 to 52	35 to 52
Order unit	PR	PR	PR	PR	PR	PR

Safety Footwear

uvex 1 x-tended support



climazone

uvex 1 x-tended support · Sandal S1 P SRC · Shoe S3 SRC · Lace-up boot S3 SRC

General features:

- ultra low weight, versatile S1 P safety sandal or S3 safety shoe/boot
- made from synthetic materials, so suitable for people allergic to chrome
- all sole materials are free of silicones, plasticisers and other paint wetting impairment substances
- foamed polyurethane scuffcap helps increase product life of upper
- two adjustable hook-and-loop straps (sandal)
- elastic laces for quick, individual adjustment, normal laces also provided (shoe)

Protection features:

- meets the ESD specification with volume resistance under 35 megaohms
- 100% metal-free uvex xenova® toe cap – compact design, anatomical shape, good lateral stability, no thermal conductivity
- ergonomically designed outsole made from dual density polyurethane with excellent slip resistance
- 'x-tended' support: medial and lateral heel support for the foot with specially designed side frame – provides additional protection from ankle twisting, stabilises and guides the foot while providing impact protection (shoe and boot)
- penetration-resistant, non-metallic midsole in accordance with the latest safety standards, does not restrict flexibility of the shoe

Comfort features:

- outstanding wearer comfort thanks to a newly developed last and climate-optimised, breathable materials with perforation (sandal) or water-repellent (S3 models)
- virtually seam-free construction made from high-tech microvelour material to eliminate pressure points
- removable antistatic comfortable insole, with a moisture transport system and additional shock absorption around the heel and forefoot
- soft padding on collar and tongue (sandal) or dust tongue
- sizes 35 to 40 have been produced using a women's last

Areas of application:

- light applications

uvex 1 x-tended support	Sandal S1 P SRC			Shoe S3 SRC			Lace-up boot S3 SRC		
Art. no.	85361	85362	85363	85161	85162	85163	85171	85172	85173
Width	10	11	12	10	11	12	10	11	12
Standard	EN ISO 20345: 2011 S1 P SRC			EN ISO 20345: 2011 S3 SRC			EN ISO 20345: 2011 S3 SRC		
Upper	microvelour			microvelour			microvelour		
Lining	distance mesh lining			distance mesh lining			distance mesh lining		
Sizes	35 to 52	35 to 52	35 to 52	35 to 52	35 to 52	35 to 52	35 to 52	35 to 52	35 to 52
Order unit	PR	PR	PR	PR	PR	PR	PR	PR	PR

Safety Footwear

uvex 1 x-tended support



65681
65682
65683



65671
65672
65673



uvex 1 x-tended support · Perforated Shoe S1 P SRC · Shoe S3 SRC

General features:

- ultra-lightweight and versatile perforated S1 P safety shoe and S3 safety shoe
- made from synthetic materials, so suitable for people allergic to chrome
- all sole materials are free of silicones, plasticisers and other paint wetting impairment substances
- foamed polyurethane scuffcap helps increase product life of upper
- Boa® Fit System (consisting of a micro-adjustable dial, super-strong lightweight laces and low friction lace guides) engineered to optimise fit and provide precision, adaptability, and control

Protection features:

- meets the ESD specification with volume resistance under 35 megaohms
- 100% metal-free uvex xenova® toe cap – compact design, anatomical shape, good lateral stability, no thermal conductivity
- ergonomically designed outsole made from dual density polyurethane with excellent slip resistance
- 'x-tended' support: medial and lateral heel support for the foot with specially designed side frame – provides additional protection from ankle twisting, stabilises and guides the foot while providing impact protection
- penetration-resistant, non-metallic midsole in accordance with the latest safety standards, does not restrict flexibility of the shoe

Comfort features:

- outstanding wearer comfort thanks to a newly developed last and climate-optimised, breathable materials with perforation (S1 P model) or water-repellent (S3 model)
- virtually seam-free construction made from high-tech microvelour material to eliminate pressure points
- removable antistatic comfortable insole, with a moisture transport system and additional shock absorption around the heel and forefoot
- soft padding on the tongue (S1 P shoe) or dust tongue (S3 shoe) and collar
- sizes 35 to 40 have been produced using a women's last

Areas of application:

- light applications



uvex 1 x-tended support	Perforated Shoe S1 P SRC			Shoe S3 SRC		
Art. no.	65681	65682	65683	65671	65672	65673
Width	10	11	12	10	11	12
Standard	EN ISO 20345: 2011 S1 P SRC			EN ISO 20345: 2011 S3 SRC		
Upper	microvelour			microvelour		
Lining	distance mesh lining			distance mesh lining		
Sizes	35 to 52	35 to 52	35 to 52	35 to 52	35 to 52	35 to 52
Order unit	PR	PR	PR	PR	PR	PR

Safety Footwear

uvex 1 ladies



uvex 1 ladies · Sandal S1 SRC · Shoe S2 SRC

- General features:
- ultra low weight, versatile S1 safety sandal and S2 safety shoe
 - made from synthetic materials, so suitable for people allergic to chrome
 - all sole materials are free of silicones, plasticisers and other paint wetting impairment substances
 - two adjustable hook-and-loop straps (sandal)
 - elastic laces for quick, individual adjustment, normal laces also provided (shoe)
- Protection features:
- meets the ESD specification with volume resistance under 35 megaohms
 - 100% metal-free uvex xenova® toe cap – compact design, anatomical shape, good lateral stability, no thermal conductivity
 - ergonomically designed outsole made from dual density polyurethane with excellent slip resistance

- Comfort features:
- outstanding wearer comfort results from a newly developed last and climate-optimised, breathable materials with perforation (sandals)
 - virtually seam-free construction made from high-tech microvelour material to eliminate pressure points
 - removable antistatic comfortable insole, with a moisture transport system and additional shock absorption around the heel and forefoot
 - soft padding on collar and tongue (sandal) or collar and dust tongue (shoe)
- Areas of application:
- light applications

uvex 1 ladies	Sandal S1 SRC		Shoe S2 SRC	
Art. no.	85607	85608	85627	85628
Width	10	11	10	11
Standard	EN ISO 20345:2011 S1 SRC		EN ISO 20345:2011 S2 SRC	
Upper	microvelour		microvelour	
Lining	distance mesh lining		distance mesh lining	
Sizes	35 to 43		35 to 43	
Order unit	PR		PR	

Safety Footwear

uvex 1 ladies



85617
85618



85647
85648



climazone

uvex 1 ladies · Perforated shoe S1 SRC · Perforated lace-up boot S1 SRC

General features:

- ultra low weight and versatile perforated S1 safety shoe/boot
- made from synthetic materials, so suitable for people allergic to chrome
- all sole materials are free of silicones, plasticisers and other paint wetting impairment substances
- elastic laces for quick, individual adjustment, normal laces also provided (shoe)

Protection features:

- meets the ESD specification with volume resistance under 35 megaohms
- 100% metal-free uvex xenova® toe cap – compact design, anatomical shape, good lateral stability, no thermal conductivity
- ergonomically designed outsole made from dual density polyurethane with excellent slip resistance

Comfort features:

- outstanding wearer comfort results from a newly developed last and climate-optimised, breathable materials with perforation
- virtually seam-free construction made from high-tech microvelour material to eliminate pressure points
- removable antistatic comfortable insole, with a moisture transport system and additional shock absorption around the heel and forefoot
- soft padding on collar and tongue

Areas of application:

- light applications



uvex 1 ladies	Perforated shoe S1 SRC		Perforated lace-up boot S1 SRC	
Art. no.	85617	85618	85647	85648
Width	10	11	10	11
Standard	EN ISO 20345:2011 S1 SRC		EN ISO 20345:2011 S1 SRC	
Upper	microvelour		microvelour	
Lining	distance mesh lining		distance mesh lining	
Sizes	35 to 43	35 to 43	35 to 43	35 to 43
Order unit	PR	PR	PR	PR

Safety Footwear

uvex 1



uvex 1 • Shoe S3 SRC • Lace-up boot S3 SRC

General features:

- very low weight, versatile S3 safety shoe/boot
- all sole materials are free of silicones, plasticisers and other paint wetting impairment substances
- elastic laces for quick, individual adjustment, normal laces also provided (shoe)

Protection features:

- meets the ESD specifications with volume resistance under 35 megaohms
- 100% metal-free uvex xenova® toe cap – compact design, anatomical shape, good lateral stability, no thermal conductivity
- penetration-resistant, non-metallic midsole in accordance with the latest safety standards, does not restrict flexibility of the boot
- ergonomically designed outsole made from dual density polyurethane with excellent slip resistance

Comfort features:

- outstanding wearer comfort results from a newly developed last and climate-optimised, breathable materials
- virtually seam-free construction made from particularly soft cowhide leather to eliminate pressure points
- removable antistatic comfortable insole, with a moisture transport system and additional shock absorption around the heel and forefoot
- soft padding on collar and dust tongue
- sizes 35 to 40 have been produced using a women's last

Areas of application:

- light applications

uvex 1	Shoe S3 SRC				Lace-up boot S3 SRC			
Art. no.	85521	85522	85523	85524	85551	85552	85553	85554
Width	10	11	12	14	10	11	12	14
Standard	EN ISO 20345:2011 S3 SRC				EN ISO 20345:2011 S3 SRC			
Upper	sturdy water-repellent leather upper				sturdy water-repellent leather upper			
Lining	distance mesh lining				distance mesh lining			
Sizes	35 to 52	35 to 52	35 to 52	35 to 52	35 to 52	35 to 52	35 to 52	35 to 52
Order unit	PR	PR	PR	PR	PR	PR	PR	PR

Safety Footwear

uvex motion 3XL



uvex motion 3XL · Shoe S3 SRC

General features:

- extremely wide innovative shoe
- made from synthetic materials, so suitable for people allergic to chrome
- variable PU outsole individually adjustable to a range of protective modifications
- ample room for individually adapted insole for diabetic wearers

Protection features:

- meets the ESD specification with volume resistance under 35 megaohms
- 100% metal-free uvex xenova® toe cap means the entire shoe is neither thermally conductive nor magnetic
- penetration-resistant, non-metallic midsole in accordance with the latest safety standards, does not restrict flexibility of the shoe
- extended uvex anti-twist heel cap significantly increases stability and offers improved protection from ankle twisting

Comfort features:

- virtually seam-free construction from high-tech microvelour material to eliminate pressure points
- soft padding on collar and padded dust tongue
- elastic laces for quick, individual adjustment
- individually changeable antistatic EVA insole



uvex motion 3XL	Shoe S3 SRC
Art. no.	64963
Width	> 15
Standard	EN ISO 20345:2011 S3 SRC
Upper	microvelour
Lining	distance mesh lining
Sizes	35 to 50
Order unit	PR

► Further information on this product can be found on pages 414 to 419

uvex



Video



Winners at work – uvex 1 sport



Designed for Individuals



Sporty look.

Sporty design meets sophisticated functionality: The uvex 1 sport is both youthful and stylish combined with first-class wearer comfort, thanks to its lightweight design, climate optimised high-tech materials and ergonomically shaped outsole.

uvex 1 sport – the ideal companion for daily working life and more.

High breathability.

The breathable mesh upper ensures optimised climate control. The sporty look of the uvex 1 sport is contributing to the increased acceptance of wearing safety footwear.

Website



Lightweight and ergonomic design.

uvex 1 sport sole

- ergonomically designed outsole comprising dual-density polyurethane for light applications
- extremely comfortable underfoot
- suitable for general use on almost all surfaces
- excellent anti-slip properties (SRC)
- abrasion-resistant
- meets the ESD specification with volume resistance < 35 megaohms
- free of paint wetting impairment substances

Now also available as occupational shoes on page 297.

Safety Footwear

uvex 1 sport



65987
65988
65989
65980



65971
65972
65973
65974



65991
65992
65993
65994



reddot design award
winner 2018



GERMAN
DESIGN
AWARD
WINNER
2019



uvex 1 sport · Shoe S1 SRC/S1 P SRC

General features:

- modern, ultra lightweight and flexible S1 and S1 P safety shoe
- suitable for people allergic to chrome as it's made from synthetic materials
- all sole materials are free of silicones, plasticisers and other paint wetting impairment substances

Protection features:

- meets the ESD specification with volume resistance under 35 megaohms
- 100% metal-free uvex xenova® toe cap – compact design, anatomical shape, good lateral stability, no thermal conductivity
- ergonomically designed outsole made from dual density polyurethane with excellent slip resistance
- penetration-resistant, non-metallic midsole in accordance with the latest safety standards, does not restrict flexibility of the shoe (S1 P shoes only)

Comfort features:

- outstanding wearer comfort thanks to a newly developed last and climate-optimised, breathable materials
- virtually seam-free construction made from high-tech materials to eliminate pressure points
- removable antistatic comfortable insole, with a moisture transport system and additional shock absorption around the heel and forefoot
- soft padding on collar and tongue
- sizes 35 to 40 have been produced using a women's last

Areas of application:

- light applications

uvex 1 sport	Shoe S1 SRC			
Art. no.	65987	65988	65989	65980
Width	10	11	12	14
Standard	EN ISO 20345:2011 S1 SRC			
Upper	textile			
Lining	distance mesh lining			
Sizes	35 to 52	35 to 52	35 to 52	35 to 52
Order unit	PR	PR	PR	PR

uvex 1 sport	Shoe S1 P SRC				Shoe S1 P SRC			
Art. no.	65971	65972	65973	65974	65991	65992	65993	65994
Width	10	11	12	14	10	11	12	14
Standard	EN ISO 20345:2011 S1 P SRC				EN ISO 20345:2011 S1 P SRC			
Upper	textile				textile			
Lining	distance mesh lining				distance mesh lining			
Size	35 to 43	35 to 43	35 to 43	35 to 43	35 to 52	35 to 52	35 to 52	35 to 52
Order unit	PR	PR	PR	PR	PR	PR	PR	PR

Safety Footwear

uvex 1 sport



65961
65962
65963
65964



65941 65947
65942 65948
65943 65949
65944 65940



uvex 1 sport · Shoe S3 SRC/S1 P SRC/S1 SRC

General features:

- modern, ultra lightweight and flexible S1 P and S3 safety shoes
- suitable for people allergic to chrome as it's made from synthetic materials
- all sole materials are free of silicones, plasticisers and other paint wetting impairment substances

Protection features:

- meets the ESD specification with volume resistance less than 35 megaohms
- 100% metal-free uvex xenova® toe cap – compact design, anatomical shape, good lateral stability, no thermal conductivity
- ergonomically designed outsole comprising dual-density polyurethane with excellent slip resistance
- penetration-resistant, non-metallic midsole in accordance with the latest safety standards, does not restrict flexibility of the shoe (S1P- and S3 Shoe)

Comfort features:

- outstanding wearer comfort thanks to a newly developed last and climate-optimised, breathable materials
- virtually seam-free construction made from high-tech materials to eliminate pressure points
- removable antistatic comfortable insole, with a moisture transport system and additional shock absorption around the heel and forefoot
- soft padding on collar and tongue
- sizes 35 to 40 have been produced using a women's last

Areas of application:

- light applications

uvex 1 sport	Shoe S3 SRC			
Art. no.	65961	65962	65963	65964
Width	10	11	12	14
Standard	EN ISO 20345:2011 S3 SRC			
Upper	microvelour			
Lining	distance mesh lining			
Sizes	35 to 52	35 to 52	35 to 52	35 to 52
Order unit	PR	PR	PR	PR

uvex 1 sport	Shoe S1 P SRC				Shoe S1 SRC			
Art. no.	65941	65942	65943	65944	65947	65948	65949	65940
Width	10	11	12	14	10	11	12	14
Standard	EN ISO 20345:2011 S1 P SRC				EN ISO 20345:2011 S1 SRC			
Upper	textile				textile			
Lining	distance mesh lining				distance mesh lining			
Sizes	35 to 52	35 to 52	35 to 52	35 to 52	35 to 52	35 to 52	35 to 52	35 to 52
Order unit	PR	PR	PR	PR	PR	PR	PR	PR

You can find more information on uvex medicare on pages 411 to 421

Safety Footwear

uvex 1 sport



65901
65902
65903
65904



65921
65922
65923
65924



climazone

uvex 1 sport · Shoe S1 P SRC/S3 SRC

General features:

- modern, ultra lightweight and flexible S1 and S1 P safety shoes
- suitable for people allergic to chrome as it's made from synthetic materials
- all sole materials are free of silicones, plasticisers and other paint wetting impairment substances

Protection features:

- meets the ESD specification with volume resistance under 35 megaohms
- 100% metal-free uvex xenova® toe cap – compact design, anatomical shape, good lateral stability, no thermal conductivity
- ergonomically designed outsole made from dual density polyurethane with excellent slip resistance
- penetration-resistant, non-metallic midsole in accordance with the latest safety standards, does not restrict flexibility of the shoe

Comfort features:

- outstanding wearer comfort thanks to a newly developed last and climate-optimised, breathable materials
- virtually seam-free construction made from high-tech materials to eliminate pressure points
- removable antistatic comfortable insole, with a moisture transport system and additional shock absorption around the heel and forefoot
- soft padding on collar and tongue
- sizes 35 to 40 have been produced using a women's last

Areas of application:

- light applications

uvex 1 sport	Shoe S1 P SRC				Shoe S3 SRC			
Art. no.	65901	65902	65903	65904	65921	65922	65923	65924
Width	10	11	12	14	10	11	12	14
Standard	EN ISO 20345:2011 S1 P SRC				EN ISO 20345:2011 S3 SRC			
Upper	textile				microvelour			
Lining	distance mesh lining				distance mesh lining			
Size	35 to 52	35 to 52	35 to 52	35 to 52	35 to 52	35 to 52	35 to 52	35 to 52
Order unit	PR	PR	PR	PR	PR	PR	PR	PR

Occupational shoes
uvex 1 sport NC



65937
65938
65939



65957
65958
65959



uvex 1 sport NC · Shoe O1 FO SRC

General features:

- modern, ultra-lightweight and flexible O1 occupational shoes without toe cap
- suitable for people allergic to chrome as it's made from synthetic materials
- all sole materials are free of silicones, plasticisers and other paint wetting impairment substances

Protection features:

- meets the ESD specification with volume resistance less than 35 megaohms
- ergonomically designed outsole comprising dual-density polyurethane with excellent slip resistance

Comfort features:

- outstanding wearer comfort thanks to a newly developed last and climate-optimised, breathable materials
- virtually seam-free construction made from high-tech materials to eliminate pressure points
- removable antistatic comfortable insole, with a moisture transport system and additional shock absorption around the heel and forefoot
- soft padding on collar and tongue
- sizes 35 to 40 have been produced using a women's last

Areas of application:

- light applications



uvex 1 sport NC	Shoe O1 FO SRC			Shoe O1 FO SRC		
Art. no.	65937	65938	65939	65957	65958	65959
Width	10	11	12	10	11	12
Standard	EN ISO 20347:2012 O1 FO SRC			EN ISO 20347:2012 O1 FO SRC		
Upper	textile			textile		
Lining	distance mesh lining			distance mesh lining		
Sizes	35 to 52	35 to 52	35 to 52	35 to 52	35 to 52	35 to 52
Order unit	PR	PR	PR	PR	PR	PR

Safety Footwear

uvex 1 sport hygiene



65807
65808
65809



65817
65818
65819



65821
65822
65823



climazone

uvex 1 sport hygiene · Shoe S2 SRC/S3 SRC

General features:

- modern, metal-free, ultra-lightweight and flexible S2 or S3 safety shoe
- upper made from hydrophobic microfibre material that is easy to clean
- minimal number of seams to reduce contamination
- made from synthetic materials, so suitable for people allergic to chrome
- washable at up to 30°C
- all sole materials are free of silicones, plasticisers and other paint wetting impairment substances

Protection features:

- meets the ESD specification with volume resistance under 35 megaohms
- Metal-free uvex xenova® protective toe cap – compact design, anatomical shape, good lateral stability and no thermal conductivity
- ergonomically designed outsole made from dual density polyurethane with outstanding shock absorption and excellent slip resistance
- penetration-resistant, non-metallic midsole in accordance with current safety standards, does not restrict flexibility of the shoe (S3 shoe)

Comfort features:

- outstanding wearer comfort thanks to a newly developed last and climate-optimised, breathable materials
- virtually seam-free construction to eliminate pressure points
- removable antistatic comfortable insole, with a moisture transport system and additional shock absorption around the heel and forefoot
- padded dust tongue (S3 shoe) and collar
- sizes 35 to 40 have been produced using a women's last

Areas of application:

- light applications

uvex 1 sport hygiene	Shoe S2 SRC			Shoe S2 SRC			Shoe S3 SRC		
Art. no.	65807	65808	65809	65817	65818	65819	65821	65822	65823
Width	10	11	12	10	11	12	10	11	12
Standard	EN ISO 20345:2011 S2 SRC			EN ISO 20345:2011 S2 SRC			EN ISO 20345:2011 S3 SRC		
Upper	Microfibre			Microfibre			Microfibre		
Lining	distance mesh lining			distance mesh lining			distance mesh lining		
Sizes	35 to 52	35 to 52	35 to 52	35 to 52	35 to 52	35 to 52	35 bis 52	35 to 52	35 to 52
Order unit	PR	PR	PR	PR	PR	PR	PR	PR	PR

Safety Footwear

uvex motion style



uvex motion style · Perforated Shoe S1 SRC

General features:

- low weight, perforated S1 safety shoe with a sporty design
- made from synthetic materials, so suitable for people allergic to chrome
- all sole materials are free of silicones, plasticisers and other paint wetting impairment substances
- elastic laces for quick, individual adjustment

Protection features:

- meets the ESD specification with volume resistance under 35 megaohms
- self-cleaning, lightweight PU outsole with optimal abrasion resistance and shock absorption and excellent slip resistance
- reliable protection for wearers: steel toe cap and stabilising uvex anti-twist heel cap to prevent ankle twisting

Comfort features:

- ideal foot climate constantly maintained due to uvex climazone: highly breathable lining and upper with perforation together with comfortable climatic insole with moisture transport system
- comfortable, soft and largely seamless design with no pressure points – with soft padding on collar and tongue
- antistatic uvex 3D hydroflex® foam insole for optimal shock absorption around heel and forefoot

Areas of application:

- light applications

uvex motion style	Perforated shoe S1 SRC	Perforated shoe S1 SRC
Art. no.	69898	69988
Width	11	11
Standard	EN ISO 20345:2011 S1 SRC	EN ISO 20345:2011 S1 SRC
Upper	high-tech microvelour	high-tech microvelour
Lining	distance mesh lining	distance mesh lining
Sizes	36 to 50	36 to 50
Order unit	PR	PR

uvex motion style · Shoe S2 SRC · Lace-up boot S2 SRC

General features:

- low weight S2 safety shoe and boot with a sporty design
- made from synthetic materials, so suitable for people allergic to chrome
- all sole materials are free of silicones, plasticisers and other paint wetting impairment substances
- elastic laces for quick, individual adjustment (shoe)

Protection features:

- meets the ESD specification with volume resistance under 35 megaohms
- self-cleaning, lightweight PU outsole with optimal abrasion resistance, shock absorption and excellent slip resistance
- reliable protection for wearers: steel toe cap and stabilising uvex anti-twist heel cap help prevent ankle twisting

Comfort features:

- ideal foot climate constantly maintained due to uvex climazone: highly breathable lining and upper together with comfortable climatic insole with moisture transport system
- high-tech microvelour material
- comfortable, soft feel and seamless design with no pressure points – with soft padding on the collar and a padded dust tongue
- antistatic uvex 3D hydroflex® foam insole for optimal shock absorption around heel and forefoot

Areas of application:

- light applications

uvex motion style	Shoe S2 SRC	Lace-up boot S2 SRC
Art. no.	69788	69798
Width	11	11
Standard	EN ISO 20345:2011 S2 SRC	EN ISO 20345:2011 S2 SRC
Upper	high-tech microvelour	high-tech microvelour
Lining	distance mesh lining	distance mesh lining
Sizes	36 to 50	36 to 50
Order unit	PR	PR

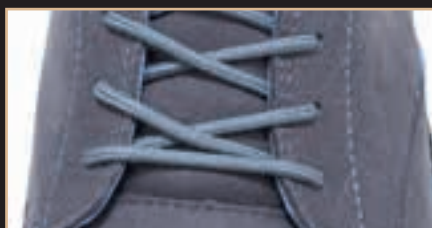
uvex 1 business – the best of both worlds

Perfect for the office as well as the workshop.

Do you need to head straight from the meeting room to the production line? uvex's new line of safety shoes brings together three classic looks from the fashion world – Derby shoes, desert boots and Chelsea boots. uvex 1 business safety shoes can go wherever you go, managing to be stylish and safe at the same time! Their attractive appearance blends seamlessly with smart business and casual attire, while their steel cap provides maximum protection with plenty of toe room. Their first-class wearer comfort never fails to impress, from morning to night.

High wearer acceptance

This ultra-lightweight range of safety footwear in a modern business look is available in S2 and S3 versions, in stylish blue or grey.



Proven safety

The extra-wide steel cap, metal-free, penetration-resistant midsole and non-slip outsole, which exceeds the requirements of the standard for shock absorption by almost 100%, provide optimum protection.



Breathable materials

The highly breathable, chrome-free materials and antistatic comfortable insole ensure a pleasant foot climate, even during prolonged periods of use.



Comfortable fit

The innovative microvelour material with soft padding and insole with additional shock absorption around the heel and forefoot guarantee a pressure-free fit.



Orthopaedic solutions in accordance with German DGUV 112-191* and Austrian ONORM Z1259

climazone



You can find more information at www.uvex-safety.com/uvex1business

* formerly BGR 191

Highstreet Fashion meets Safety



Safety Footwear

uvex 1 business



uvex 1 business · Shoe S2 SRC · Shoe S3 SRC

General features:

- modern, ultra-lightweight and flexible S2 and S3 safety shoes: safe, stylish and super comfortable in a modern business look
- made from synthetic materials, so suitable for people allergic to chrome
- all sole materials are free of silicones, plasticisers and other paint wetting impairment substances

Protection features:

- meets the ESD specification with volume resistance under 35 megaohms
- robust, extra-wide steel toe cap for maximum wearer comfort
- ergonomically designed outsole made from polyurethane with excellent slip resistance
- penetration-resistant, non-metallic midsole in accordance with the latest safety standards, does not restrict flexibility of the shoe (S3 model)

Comfort features:

- outstanding wearer comfort results from a newly developed last and climate-optimised, breathable materials
- made from high-tech microvelour for a soft, comfortable fit with no pressure points – with soft padding on the collar and a padded tongue
- removable antistatic comfortable insole, with a moisture transport system and additional shock absorption around the heel and forefoot

Areas of application:

- light applications

uvex 1 business	Shoe S2 SRC			Shoe S3 SRC		
Art. no.	84697	84698	84699	84281	84282	84283
Width	10	11	12	10	11	12
Standard	EN ISO 20345: 2011 S2 SRC			EN ISO 20345: 2011 S3 SRC		
Upper	microvelour			microvelour		
Lining	textile lining			textile lining		
Sizes	39 to 52	39 to 52	39 to 52	39 to 52	39 to 52	39 to 52
Order unit	PR	PR	PR	PR	PR	PR

Safety Footwear

uvex 1 business


84271
84272
84273

84261
84262
84263


uvex 1 business · Lace-up boot S3 SRC · Slip-on boot S3 SRC

General features:

- modern, ultra-lightweight and flexible S3 safety boot and slip-on boot: safe, stylish and super comfortable in a modern business look
- made from synthetic materials, so suitable for people allergic to chrome
- all sole materials are free of silicones, plasticisers and other paint wetting impairment substances

Protection features:

- meets the ESD specification with volume resistance under 35 megaohms
- robust, extra-wide steel toe cap for maximum wearer comfort
- ergonomically designed outsole made from polyurethane with excellent slip resistance
- penetration-resistant, non-metallic midsole in accordance with the latest safety standards, does not restrict flexibility of the shoe

Comfort features:

- outstanding wearer comfort thanks to a newly developed last and climate-optimised, breathable materials
- made from high-tech microvelour for a soft, comfortable fit with no pressure points – with soft padding on the collar and a padded tongue (boot)
- removable antistatic comfortable insole, with a moisture transport system and additional shock absorption around the heel and forefoot

Areas of application:

- light applications



uvex 1 business	Lace-up boot S3 SRC			Slip-on boot S3 SRC		
Art. no.	84271	84272	84273	84261	84262	84263
Width	10	11	12	10	11	12
Standard	EN ISO 20345: 2011 S3 SRC			EN ISO 20345: 2011 S3 SRC		
Upper	microvelour			microvelour		
Lining	textile lining			textile lining		
Sizes	39 to 52	39 to 52	39 to 52	39 to 52	39 to 52	39 to 52
Order unit	PR	PR	PR	PR	PR	PR

Safety Footwear
uvex business casual



uvex business casual · Shoe S1 SRC and S1 P SRC

General features:

- lightweight S1 and S1 P safety shoes perfect for office environments: from classically elegant to sporty and casual
- wingtip Derby brogue (95122 and 95128)
- all sole materials are free of silicones, plasticisers and other paint wetting impairment substances

Protection features:

- meets the ESD specification with volume resistance under 35 megaohms
- sturdy steel toe cap
- penetration-resistant steel midsole (S1 P models 95102, 95112 and 95122)
- self-cleaning, lightweight DUO polyurethane outsole with optimal abrasion resistance, shock absorption and excellent slip resistance

Comfort features:

- ideal foot climate constantly maintained due to uvex climazone: moisture-absorbing textile lining, breathable leather upper and comfortable climatic insole with a moisture transport system
- removable antistatic comfortable insole, with additional shock absorption in the heel and forefoot
- soft padding on collar and tongue

Areas of application:

- light applications

uvex business casual	Shoe S1 P SRC	Shoe S1 SRC	Shoe S1 P SRC	Shoe S1 P SRC	Shoe S1 SRC
Art. no.	95102	95108	95112	95122	95128
Width	11	11	11	11	11
Standard	EN ISO 20345:2011 S1 P SRC	EN ISO 20345:2011 S1 SRC	EN ISO 20345:2011 S1 P SRC	EN ISO 20345:2011 S1 P SRC	EN ISO 20345:2011 S1 SRC
Upper	leather	leather	leather, suede	leather	leather
Lining	textile lining	textile lining	textile lining	textile lining	textile lining
Sizes	38 to 48	38 to 48	38 to 48	38 to 48	38 to 48
Order unit	PR	PR	PR	PR	PR



PU outsole

- ergonomically designed tread
- extremely flexible with outstanding shock absorption
- very lightweight due to unique PU outsole system
- two-layer system with abrasion and cut-resistant outsole
- noticeably improved slip resistance
- self-cleaning tread
- resistance to oil and petrol
- non-marking
- short-term heat resistance up to approximately +120 °C

Safety Footwear

uvex office



95419



95414



95422

uvex office · Shoe S1 SRA

General features:

- office shoe in the classic English style in S1, shape with brogue design

Protection features:

- meets the ESD specification with volume resistance under 35 megaohms (only 95414)
- brief exposure up to 300 °C heat-resistant nitrile rubber outsole
- reliable protection for wearers: steel toe cap and stabilising uvex anti-twist heel cap helps prevent ankle twisting

Comfort features:

- comfortable fit
- ideal foot climate due to breathable lining and flexible, full-grain leather upper
- soft padding on collar
- comfortable insole

Areas of application:

- light applications

uvex office	Shoe S1 SRA	Shoe S1 SRA
Art. no.	95419	95414
Width	11	11
Standard	EN ISO 20345:2011 S1 SRA	EN ISO 20345:2011 S1 SRA
Upper	leather	leather
Lining	synthetic lining	synthetic lining
Sizes	38 to 47	38 to 47
Order unit	PR	PR

uvex office · Shoe S1 P SRA

General features:

- office shoe in the classic English style in S1 P, shape with brogue design

Protection features:

- reliable protection for wearers: penetration-resistant steel midsole, steel toe cap and stabilising uvex anti-twist heel cap help prevent ankle twisting

Comfort features:

- comfortable fit
- ideal foot climate due to breathable lining and flexible, full-grain leather upper
- soft padding on collar
- shock-absorbing polyurethane outsole
- comfortable insole

Areas of application:

- light applications

uvex office	Shoe S1 P SRA
Art. no.	95422
Width	11
Standard	EN ISO 20345:2011 S1 P SRA
Upper	leather
Lining	synthetic lining
Sizes	38 to 47
Order unit	PR



uvex office · sole made of nitrile rubber

- extremely comfortable underfoot
- non-slip
- abrasion-resistant
- highly cut-resistant
- outsole is heat-resistant for brief exposure up to +300 °C
- antistatic
- oil and petrol-resistant
- highly acid and alkali-resistant

uvex office · sole made from polyurethane

- extremely comfortable underfoot
- non-slip
- abrasion-resistant
- highly cut-resistant
- outsole is heat-resistant for brief exposure up to +120 °C
- antistatic
- oil and petrol-resistant
- with steel midsole

Winners at Work – uvex 2

Pushing the Limits!



Superior performance across all disciplines

The innovative uvex 2 safety footwear range in protection classes S3 and S1 P is up for the challenge: delivering optimum shock absorption, ergonomic fit, low weight and excellent climate characteristics, ensuring maximum performance and redefining the limits for safety footwear.

Energy-Saving and Lightweight.

Helps prevent fatigue.

Shock Absorption System for Professionals.

Relieve strain with every step.

Reliable stability.

With maximum freedom of movement.

Pressure-free, comfortable fit.

Thanks to uvex monoskin shaft design.

Anatomically designed for optimum comfort and fit.

Comfortable underfoot with climate control.

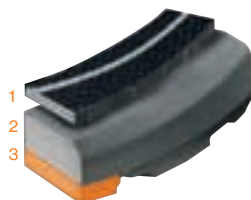
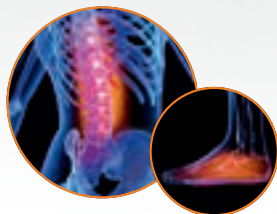
Highly breathable thanks to uvex climazone.

100% better than the standard

With up to 40 joules of energy absorption in the heel area, the uvex 2 reduces strain on the body.

In spite of the penetration-resistant midsole the energy absorption in the heel is approximately twice that required by EN ISO 20345.

The uvex 2 multilayer shock absorption system and antistatic comfort insole with additional shock absorption elements at the heel and forefoot, help protect the musculoskeletal system on hard or rough terrain.



- 1 Comfort insole
- 2 PU midsole
- 3 PU or rubber outsole



Ultra lightweight

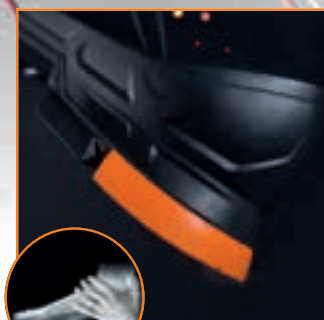
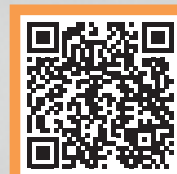
The uvex 2 range is one of the lightest S3 and S1 P safety footwear ranges for robust applications in its field.¹



Website



Video



Highly flexible

Enjoy unlimited freedom of movement, especially when kneeling, thanks to the flexible penetration resistant, metal-free midsole. The uvex no tie quick-lace system allows laces to be adjusted easily and adapt throughout the day keeping feet comfortable².

Excellent stability

The directly moulded PU scuffcap reliably protects the upper and prevents wear and tear when kneeling. The externally visible heel basket system integrated into the sole ensures sure-footedness and additional ankle protection without impairing comfort.

uvex

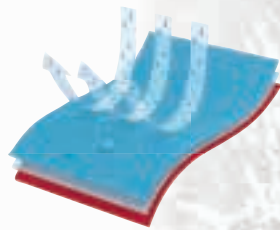
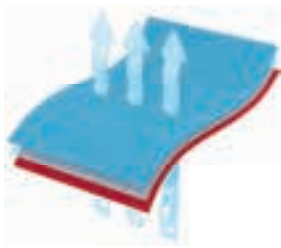
uvex 2

STX VIBRAM® 100% waterproof. Maximum breathability.



BREATHABLE

WATERPROOF



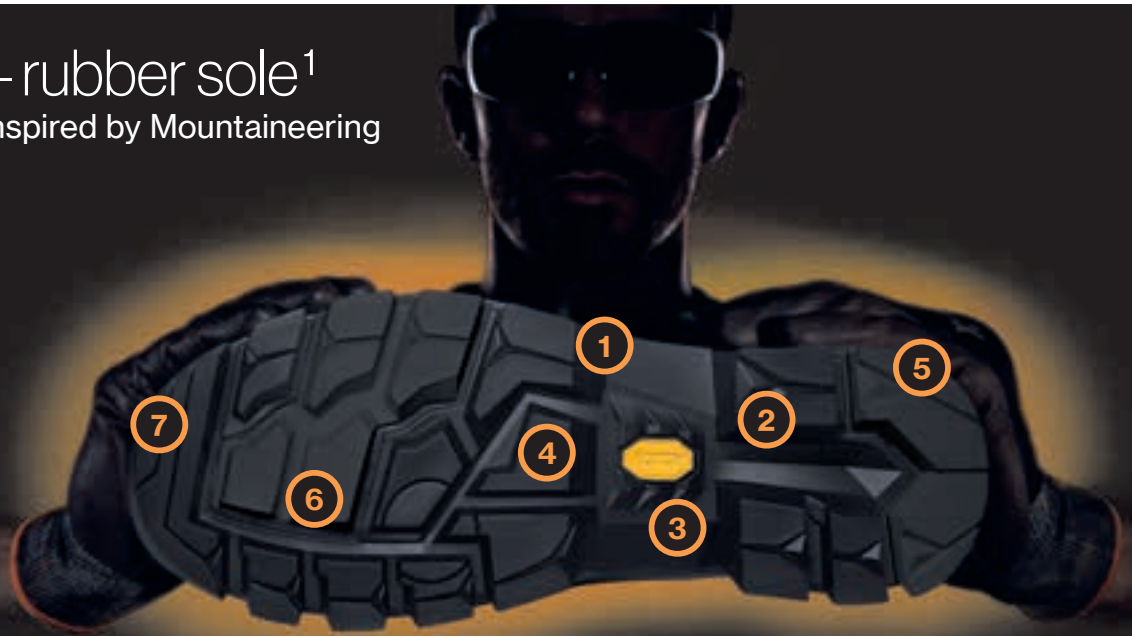
The SympaTex® membrane:

- 100% waterproof
- maximum breathability
- durable



uvex 2 – rubber sole¹

VIBRAM® – Inspired by Mountaineering



The rubber compound developed exclusively for uvex is optimised for moderately difficult applications with demanding ground conditions and integrates additional features in addition to the basic characteristics of the uvex 2 PU/PU sole:

- ① as light as a PU sole
- ② heat-resistant outsole for short periods up to +300 °C (HRO label)
- ③ increased cut resistance
- ④ heat-insulating (HI label, tested at +150 °C)
- ⑤ increased low-temperature flexibility and slip resistance
- ⑥ improved chemical resistance compared to PU soles
- ⑦ orthopaedic adjustments in accordance with German DGUV regulation 112-191 and Austrian ÖNORM Z1259 possible

Safety Footwear

uvex 2


65241
65242
65243

65251
65252
65253

65341
65342
65343


uvex 2 STX VIBRAM® · Shoe S3 WR HI HRO SRC · Lace-up boot S3 WR HI HRO SRC

General features:

- lightweight and flexible, waterproof safety shoe/boot in S3 WR
- made from synthetic materials, so suitable for people allergic to chrome
- foamed polyurethane scuffcap helps increase product life of upper
- elastic laces for quick, individual adjustment, normal laces also provided (65241 to 65243)
- Boa® Fit System (consisting of a micro-adjustable dial, super-strong lightweight laces and low friction lace guides) engineered to optimise fit and provide precision, adaptability, and control (65341 to 65343)

Protection features:

- Waterproof and breathable thanks to SympaTex® lining (WR marking)
- meets the ESD specification with volume resistance under 35 megaohms
- Metal-free uvex xenova® protective toe cap – compact design, anatomical shape, good lateral stability and no thermal conductivity
- ultra-lightweight, double-layer sole made from optimal shock-absorbing polyurethane midsole and VIBRAM® rubber outsole with excellent anti-slip properties
- HI marking for heat-insulating substructure (tested in accordance with standard at +150°C)
- HRO marking for heat-resistant substructure for brief exposure up to +300°C
- secure grip when climbing on ladders due to the stabilising arch support
- penetration-resistant, non-metallic midsole in accordance with current safety standards, does not restrict flexibility of the shoe

Comfort features:

- breathable yet waterproof thanks to SympaTex® lining
- outstanding wearer comfort thanks to a newly developed last and climate-optimised, breathable materials
- virtually seam-free construction made from high-tech microvelour material to eliminate pressure points
- removable anti-static comfortable insole, with a moisture transport system and additional shock absorption around the heel and forefoot
- soft padding on dust tongue and collar
- increased low-temperature flexibility of VIBRAM® rubber sole
- sizes 35 to 40 have been produced using a women's last

Areas of application:

- medium applications

uvex 2 STX Vibram®	Shoe S3 WR HI HRO SRC			Lace-up boot S3 WR HI HRO SRC			Shoe S3 WR HI HRO SRC		
Art. no.	65241	65242	65243	65251	65252	65253	65341	65342	65343
Width	10	11	12	10	11	12	10	11	12
Standard	EN ISO 20345:2011 S3 WR HI HRO SRC			EN ISO 20345:2011 S3 WR HI HRO SRC			EN ISO 20345:2011 S3 WR HI HRO SRC		
Upper	microvelour			microvelour			microvelour		
Lining	SympaTex® laminate			SympaTex® laminate			SympaTex® laminate		
Sizes	35 to 52	35 to 52	35 to 52	35 to 52	35 to 52	35 to 52	35 to 52	35 to 52	35 to 52
Order unit	PR	PR	PR	PR	PR	PR	PR	PR	PR

You can find more information on uvex medicare on pages 411 to 421

Safety Footwear

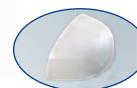
uvex 2



65221
65222
65223
65224



65231
65232
65233
65234



climazone

uvex 2 VIBRAM® · Shoe S3 HI HRO SRC · Lace-up boot S3 HI HRO SRC

General features:

- lightweight and flexible S3 safety shoe / boot
- foamed polyurethane scuffcap helps increase product life of upper
- elastic laces for quick, individual adjustment, normal laces also provided (shoe)

Protection features:

- meets the ESD specification with a volume resistance of less than 35 megaohms
- 100% metal-free uvex xenova® toe cap – compact design, anatomical shape, good lateral stability, no thermal conductivity
- ultra lightweight, double-layer sole made from optimal shock-absorbing midsole and VIBRAM® rubber outsole with excellent anti-slip properties

- HI label for heat-insulating substructure (tested in accordance with standard at +150°C)
- HRO label for heat-resistant substructure for brief exposure up to +300°C
- secure grip when climbing on ladders due to the stabilising arch support
- penetration-resistant, non-metallic midsole in accordance with the latest safety standards, does not restrict flexibility of the shoe or create thermal bridges

Comfort features:

- outstanding wearer comfort results from a newly developed last and climate-optimised, breathable materials
- virtually seam-free construction made from particularly soft cowhide leather to eliminate pressure points

- removable antistatic comfortable insole, with a moisture transport system and additional shock absorption around the heel and fore-foot
- soft padding on collar and dust tongue
- increased low-temperature flexibility of the VIBRAM® rubber sole
- sizes 35 to 40 have been produced using a women's last

Areas of application:

- medium applications

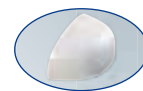
uvex 2 VIBRAM®	Shoe S3 HI HRO SRC				Lace-up boot S3 HI HRO SRC			
Art. no.	65221	65222	65223	65224	65231	65232	65233	65234
Width	10	11	12	14	10	11	12	14
Standard	EN ISO 20345:2011 S3 HI HRO SRC				EN ISO 20345:2011 S3 HI HRO SRC			
Upper	water-repellent, full-grain smooth leather				water-repellent, full-grain smooth leather			
Lining	distance mesh lining				distance mesh lining			
Sizes	35 to 52	35 to 52	35 to 52	35 to 52	35 to 52	35 to 52	35 to 52	35 to 52
Order unit	PR	PR	PR	PR	PR	PR	PR	PR

Safety Footwear

uvex 2


65311
65312
65313

65303



climazone BOA

uvex 2 VIBRAM® · Shoe S3 HI HRO SRC · Winter lace-up boot S3 CI HI HRO SRC

General features:

- lightweight and flexible S3 safety shoe and winter safety boot (only available in width 12)
- foamed polyurethane scuffcap helps increase product life of upper
- Boa® Fit System (consisting of a micro-adjustable dial, super-strong lightweight laces and low friction lace guides) engineered to optimise fit and provide precision, adaptability, and control (shoe)

Protection features:

- meets the ESD specification with volume resistance under 35 megaohms
- 100% metal-free uvex xenova® toe cap – compact design, anatomical shape, good lateral stability, no thermal conductivity

- ultra lightweight, double-layer sole made from optimal shock-absorbing midsole and VIBRAM® rubber outsole with excellent anti-slip properties
- insulating shoe design (CI certification in accordance with EN ISO 20345, winter boot only)
- HI marking for heat-insulating substructure (tested in accordance with standard at +150°C)
- HRO marking for heat-resistant substructure for brief exposure up to +300°C
- secure grip when climbing on ladders due to the stabilising arch support
- penetration-resistant, non-metallic midsole in accordance with the latest safety standards, does not restrict flexibility of the shoe or create thermal bridges

Comfort features:

- outstanding wearer comfort thanks to a newly developed last and climate-optimised, breathable materials
- virtually seam-free construction made from particularly soft cowhide leather to eliminate pressure points
- removable antistatic comfortable insole, with a moisture transport system and additional shock absorption around the heel and fore-foot
- soft padding on collar and dust tongue
- increased low-temperature flexibility of the VIBRAM® rubber sole
- sizes 35 to 40 have been produced using a women's last

Areas of application:

- medium applications



uvex 2 VIBRAM®	Halbschuh S3 HI HRO SRC			Winter lace-up boot S3 CI HI HRO SRC
Art. no.	65311	65312	65313	65303
Width	10	11	12	12
Standard	EN ISO 20345:2011 S3 HI HRO SRC			EN ISO 20345:2011 S3 CI HI HRO SRC
Upper	sturdy water-repellent leather upper			sturdy water-repellent leather upper
Lining	distance mesh lining			fleece lining
Sizes	35 to 52	35 to 52	35 to 52	35 to 52
Order unit	PR	PR	PR	PR

Safety Footwear

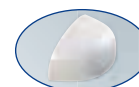
uvex 2



65201
65202
65203
65204



65211
65212
65213
65214



climazone

uvex 2 VIBRAM® · Sandal S1 P HRO SRC · Perforated shoe S1 P HRO SRC

General features:

- lightweight and flexible S1 P safety sandal / perforated safety shoe
- suitable for people allergic to chrome as made from synthetic materials
- foamed polyurethane scuffcap helps increase product life of upper
- two adjustable velcro straps (sandal) or elastic laces for quick, individual adjustment; normal laces also provided (shoe)

Protection features:

- meets the ESD specification with volume resistance less than 35 megaohms
- 100% metal-free uvex xenova® toe cap – compact design, anatomical shape, good lateral stability, no thermal conductivity
- ultra lightweight, double-layer sole made from optimal shock-absorbing polyurethane midsole and VIBRAM® rubber outsole with excellent anti-slip properties
- HRO label for heat-resistant substructure for brief exposure up to +300 °C
- secure grip when climbing on ladders due to the stabilising arch support
- penetration-resistant, non-metallic midsole in accordance with the latest safety standards, does not restrict flexibility of the shoe

Comfort features:

- outstanding wearer comfort results from a newly developed last and climate-optimised, breathable, perforated materials
- virtually seam-free construction made from high-tech microvelour material to eliminate pressure points
- removable antistatic comfortable insole, with a moisture transport system and additional shock absorption around the heel and forefoot
- increased low-temperature flexibility of VIBRAM® rubber sole
- sizes 35 to 40 have been produced using a women's last

Areas of application:

- medium applications

uvex 2 VIBRAM®	Sandal S1 P HRO SRC				Perforated shoe S1 P HRO SRC			
Art. no.	65201	65202	65203	65204	65211	65212	65213	65214
Width	10	11	12	14	10	11	12	14
Standard	EN ISO 20345:2011 S1 P HRO SRC				EN ISO 20345:2011 S1 P HRO SRC			
Upper	microvelour				microvelour			
Lining	distance mesh lining				distance mesh lining			
Sizes	35 to 52	35 to 52	35 to 52	35 to 52	35 to 52	35 to 52	35 to 52	35 to 52
Order unit	PR	PR	PR	PR	PR	PR	PR	PR

Safety Footwear

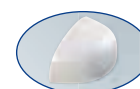
uvex 2



65281
65282
65283
65284



65291
65292
65293
65294



climazone

uvex 2 VIBRAM® · Shoe S3 HI HRO SRC · Lace-up boot S3 HI HRO SRC

General features:

- lightweight and flexible S3 safety shoe / boot
- suitable for people allergic to chrome as made from synthetic materials
- foamed polyurethane scuffcap helps increase product life of upper
- elastic laces for quick, individual adjustment, normal laces also provided (shoe)

Protection features:

- meets the ESD specification with volume resistance less than 35 megaohms
- 100% metal-free uvex xenova® toe cap – compact design, anatomical shape, good lateral stability, no thermal conductivity
- ultra lightweight, double-layer sole made from optimal shock-absorbing polyurethane midsole and VIBRAM® rubber outsole with excellent anti-slip properties
- HI label for heat-insulating substructure (tested in accordance with standard at +150°C)
- HRO label for heat-resistant substructure for brief exposure up to +300°C
- secure grip when climbing on ladders due to the stabilising arch support
- penetration-resistant, non-metallic midsole in accordance with the latest safety standards, does not restrict flexibility of the shoe

Comfort features:

- outstanding wearer comfort results from a newly developed last and climate-optimised, breathable materials
- virtually seam-free construction made from high-tech microvelour material to eliminate pressure points
- removable antistatic comfortable insole, with a moisture transport system and additional shock absorption around the heel and forefoot
- soft padding on collar and dust tongue
- increased low-temperature flexibility of VIBRAM® rubber sole
- sizes 35 to 40 have been produced using a women's last

Areas of application:

- medium applications



uvex 2 VIBRAM®	Shoe S3 HI HRO SRC				Lace-up boot S3 HI HRO SRC			
Art. no.	65281	65282	65283	65284	65291	65292	65293	65294
Width	10	11	12	14	10	11	12	14
Standard	EN ISO 20345:2011 S3 HI HRO SRC				EN ISO 20345:2011 S3 HI HRO SRC			
Upper	microvelour				microvelour			
Lining	distance mesh lining				distance mesh lining			
Sizes	35 to 52	35 to 52	35 to 52	35 to 52	35 to 52	35 to 52	35 to 52	35 to 52
Order unit	PR	PR	PR	PR	PR	PR	PR	PR

uvex 2 PU/PU Sole

Optimum Grip with every Step

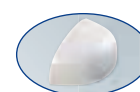


Walk and stand safely. Outdoor sole with excellent grip properties and optimum shock absorption

- | | |
|-----------------------------------------------------------------------------------------------------------------------------|-------------------------------------------------------------------------------------------------------------------------------------|
| <p>1 Abrasion-resistant TPU sections for secure foot placement to help prevent accidents.</p> | <p>5 Effective ankle protection to ensure safety when working on ladders.</p> |
| <p>2 Resistant to oil and petrol. Resistant to temperatures for short periods up to +120 °C.</p> | <p>6 Rugged, self-cleaning sole ensures maximum grip for demanding applications, uneven or dirty floors (SRC labelling).</p> |
| <p>3 Orthopaedic adjustments in accordance with German DGUV regulation 112-191 and Austrian ÖNORM Z1259 possible</p> | <p>7 Meets ESD requirements: bleed resistance < 35 megaohm.</p> |
| <p>4 Free from harmful substances that interfere with wetting agents.</p> | <p>8 Slip resistance (SRC)</p> |

Safety Footwear

uvex 2



climazone

uvex 2 · Shoe S3 SRC · Lace-up boot S3 SRC

General features:

- low weight and flexible S3 safety shoe/boot
- all sole materials are free of silicones, plasticisers and other paint wetting impairment substances
- foamed polyurethane scuffcap helps protect upper and increase product life
- elastic laces for quick, individual adjustment, normal laces also provided (shoe)

Protection features:

- meets the ESD specification with volume resistance under 35 megaohms
- 100% metal-free uvex xenova® toe cap – compact design, anatomical shape, good lateral stability, no thermal conductivity

- ergonomically designed outsole made from dual density polyurethane with a rough, self-cleaning tread and excellent slip resistance
- secure grip when climbing on ladders due to the stabilising arch support
- penetration-resistant, non-metallic midsole in accordance with the latest safety standards, does not restrict flexibility of the shoe

Comfort features:

- outstanding wearer comfort results from a newly developed last and climate-optimised, breathable materials
- virtually seam-free construction made from particularly soft cowhide leather to eliminate pressure points
- removable antistatic comfortable insole, with a moisture transport system and additional shock absorption around the heel and fore-foot
- soft padding on collar and dust tongue
- sizes 35 to 40 have been produced using a women's last

Areas of application:

- medium applications

uvex 2	Shoe S3 SRC				Lace-up boot S3 SRC			
Art. no.	65021	65022	65023	65024	65031	65032	65033	65034
Width	10	11	12	14	10	11	12	14
Standard	EN ISO 20345:2011 S3 SRC				EN ISO 20345:2011 S3 SRC			
Upper	water-repellent, full-grain smooth leather				water-repellent, full-grain smooth leather			
Lining	distance mesh lining				distance mesh lining			
Sizes	35 to 52	35 to 52	35 to 52	35 to 52	35 to 52	35 to 52	35 to 52	35 to 52
Order unit	PR	PR	PR	PR	PR	PR	PR	PR

Safety Footwear

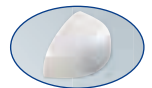
uvex 2



65001
65002
65003
65004



65011
65012
65013
65014



climazone

uvex 2 · Shoe S1 P SRC · Perforated shoe S1 P SRC

General features:

- lightweight and flexible S1 P safety sandal / perforated safety shoe
- suitable for people allergic to chrome as made from synthetic materials
- foamed polyurethane scuffcap helps increase product life of upper
- two adjustable velcro straps (sandal) or elastic laces for quick, individual adjustment; normal laces also provided (shoe)

Protection features:

- meets the ESD specification with a volume resistance of less than 35 megaohms
- 100% metal-free uvex xenova® toe cap – compact design, anatomical shape, good lateral stability, no thermal conductivity
- ergonomically designed outsole made from dual-density polyurethane with a rough, self-cleaning tread and excellent slip resistance
- secure grip when climbing on ladders due to the stabilising arch support
- penetration-resistant, non-metallic insole in accordance with the latest safety standards, does not restrict flexibility of the shoe

Comfort features:

- outstanding wearer comfort results from a newly developed last and climate-optimised, breathable, perforated materials
- virtually seam-free construction made from high-tech microvelour material to eliminate pressure points
- removable antistatic comfortable insole, with a moisture transport system and additional shock absorption around the heel and forefoot
- sizes 35 to 40 have been produced using a women's last

Areas of application:

- medium applications

uvex 2	Sandal S1 P SRC				Perforated shoe S1 P SRC			
Art. no.	65001	65002	65003	65004	65011	65012	65013	65014
Width	10	11	12	14	10	11	12	14
Standard	EN ISO 20345:2011 S1 P SRC				EN ISO 20345:2011 S1 P SRC			
Upper	microvelour				microvelour			
Lining	distance mesh lining				distance mesh lining			
Sizes	35 to 52	35 to 52	35 to 52	35 to 52	35 to 52	35 to 52	35 to 52	35 to 52
Order unit	PR	PR	PR	PR	PR	PR	PR	PR

Safety Footwear

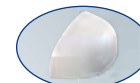
uvex 2



65081
65082
65083
65084



65091
65092
65093
65094



climazone

uvex 2 · Shoe S3 SRC · Lace-up boot S3 SRC

General features:

- lightweight and flexible S3 safety shoe / boot
- suitable for people allergic to chrome as made from synthetic materials
- foamed polyurethane scuffcap helps increase product life of upper
- elastic laces for quick, individual adjustment, normal laces also provided (shoe)

Protection features:

- meets the ESD specification with a volume resistance of less than 35 megaohms
- 100% metal-free uvex xenova® toe cap – compact design, anatomical shape, good lateral stability, no thermal conductivity
- ergonomically designed outsole made from dual-density polyurethane with a rough, self-cleaning tread and excellent slip resistance
- secure grip when climbing on ladders due to the stabilising arch support
- penetration-resistant, non-metallic midsole in accordance with the latest safety standards, does not restrict flexibility of the shoe

Comfort features:

- outstanding wearer comfort results from a newly developed last and climate-optimised, breathable materials
- virtually seam-free construction made from high-tech microvelour material to eliminate pressure points
- removable antistatic comfortable insole, with a moisture transport system and additional shock absorption around the heel and forefoot
- soft padding on collar and dust tongue
- sizes 35 to 40 have been produced using a women's last

Areas of application:

- medium applications



uvex 2	Shoe S3 SRC				Lace-up boot S3 SRC			
Art. no.	65081	65082	65083	65084	65091	65092	65093	65094
Width	10	11	12	14	10	11	12	14
Standard	EN ISO 20345:2011 S3 SRC				EN ISO 20345:2011 S3 SRC			
Upper	microvelour				microvelour			
Lining	distance mesh lining				distance mesh lining			
Sizes	35 to 52	35 to 52	35 to 52	35 to 52	35 to 52	35 to 52	35 to 52	35 to 52
Order unit	PR	PR	PR	PR	PR	PR	PR	PR

uvex 2 xenova® – robust variety

Trend-setting all-rounder



Indoor and outdoor use

uvex 2 xenova® safety shoe series – exceptional, robust and comfortable shoes, whatever you're doing. Whether indoors or outdoors, the uvex 2 xenova® are the right choice for applications such as mechanical and plant engineering, metal processing, energy (generation, supply &

grid operation), municipal operations, motorway maintenance, railways, transport & logistics, airports, trades, ancillary construction work, horticulture and landscaping. uvex 2 xenova® – the trend-setting allrounders for a wide range of applications.

Metal-free safety

The uvex xenova® system offers high levels of safety thanks to its metal-free toe cap and optional metal-free, penetration-resistant

flexible midsole that keeps out the cold, and is lightweight and flexible for lasting wearer comfort.



Comfortable, lightweight shoes

The uvex 2 xenova® safety shoes do not compromise when it comes to comfort: shock-absorbing, extremely breathable, lightweight and a perfect fit thanks to

the unique combination of uvex technologies.



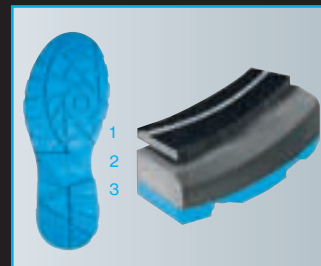
You can find more information at www.uvex-safety.com/uvex2xenova



uvex climazone standard The ultra-breathable high-tech microvelour upper material, distance mesh lining and comfortable insole with moisture transport system prevent the build-up of heat and reduce uncomfortable sweating.



Excellent fit due to newly developed last and uvex multiple fit system – available in 3 widths.



Lightweight and robust uvex dual density polyurethane sole with excellent slip resistance (SRC) and multi-layer shock absorption.

Impressively diverse

Made from high-quality black micro velour or smooth leather, the uvex 2 xenova® series offers an impressively wide variety of styles in accent colours blue, green and red in protection classes S1, S1 P, S2 and S3.

An overview of all uvex 2 xenova® models can be found on page 320.





uvex 2 xenova®

Model overview

uvex 2 xenova® with microvelour upper			
S1 Sandal	 95537 95538 95539	 95597 95598 95599	 95047 95048 95049
S1 P Sandal	 95531 95532 95533	 95591 95592 95593	 95041 95042 95043
S1 Perforated shoe	 95547 95548 95549	 95607 95608 95609	 95057 95058 95059
S1 P Perforated shoe with Boa® Fit System	 95581 95582 95583		
S2 Shoe	 95577 95578 95579	 95687 95688 95689	 95087 95088 95089
uvex 2 xenova® with leather upper			
S2 Shoe	 95557 95558 95559	 95647 95648 95649	 95067 95068 95069
S2 Lace-up boot	 95567 95568 95569	 95667 95668 95669	 95077 95078 95079
S3 Shoe	 95551 95552 95553	 95641 95642 95643	 95061 95062 95063
S3 Lace-up boot	 95561 95562 95563	 95661 95662 95663	 95071 95072 95073

Safety Footwear

uvex 2 xenova®



95537
95538
95539

95597
95598
95599

95047
95048
95049



climazone

uvex 2 xenova® · Sandal S1 SRC

General features:

- lightweight and modern S1 safety sandals
- made from synthetic materials, so suitable for people allergic to chrome
- all sole materials are free of silicones, plasticisers and other paint wetting impairment substances
- double, individually adjustable hook and loop straps

Protection features:

- meets the ESD specification with volume resistance under 35 megaohms
- 100% metal-free uvex xenova® safety toe cap – compact design, anatomical shape, good lateral stability, no thermal conductivity
- ergonomically designed outsole made from dual density polyurethane with excellent slip resistance
- reflective elements for better visibility

Comfort features:

- lightweight with excellent shock-absorbing properties
- outstanding wearer comfort thanks to a newly developed last and climate-optimised, breathable materials
- removable antistatic comfortable insole, with a moisture transport system and additional shock absorption around the heel and fore-foot
- soft padding on tongue and collar

Areas of application:

- medium applications

uvex 2 xenova®	Sandal S1 SRC			Sandal S1 SRC			Sandal S1 SRC		
Art. no.	95537	95538	95539	95597	95598	95599	95047	95048	95049
Width	10	11	12	10	11	12	10	11	12
Standard	EN ISO 20345:2011 S1 SRC								
Upper	microvelour								
Lining	distance mesh lining								
Sizes	38 to 52	38 to 52	38 to 52	38 to 52	38 to 52	38 to 52	38 to 52	38 to 52	38 to 52
Order unit	PR	PR	PR	PR	PR	PR	PR	PR	PR

Safety Footwear

uvex 2 xenova®



95531
95532
95533

95591
95592
95593

95041
95042
95043



uvex 2 xenova® · Sandal S1 P SRC

General features:

- lightweight and modern S1 P safety sandals
- made from synthetic materials, so suitable for people allergic to chrome
- all sole materials are free of silicones, plasticisers and other paint wetting impairment substances
- double, individually adjustable hook and loop straps

Protection features:

- meets the ESD specification with volume resistance under 35 megaohms
- 100% metal-free uvex xenova® safety toe cap – compact design, anatomical shape, good lateral stability, no thermal conductivity
- penetration-resistant, non-metallic midsole in accordance with the latest safety standards, does not restrict flexibility of the shoe
- ergonomically designed outsole made from dual density polyurethane with excellent slip resistance
- reflective elements for better visibility

Comfort features:

- lightweight with excellent shock-absorbing properties
- outstanding wearer comfort thanks to a newly developed last and climate-optimised, breathable materials
- removable antistatic comfortable insole, with a moisture transport system and additional shock absorption around the heel and forefoot
- soft padding on tongue and collar

Areas of application:

- medium applications

uvex 2 xenova®	Sandal S1 P SRC			Sandal S1 P SRC			Sandal S1 P SRC		
Art. no.	95531	95532	95533	95591	95592	95593	95041	95042	95043
Width	10	11	12	10	11	12	10	11	12
Standard	EN ISO 20345:2011 S1 P SRC								
Upper	microvelour								
Lining	distance mesh lining								
Sizes	38 to 52	38 to 52	38 to 52	38 to 52	38 to 52	38 to 52	38 to 52	38 to 52	38 to 52
Order unit	PR	PR	PR	PR	PR	PR	PR	PR	PR

Safety Footwear

uvex 2 xenova®



95547
95548
95549

95607
95608
95609

95057
95058
95059



uvex 2 xenova® · Perforated shoe S1 SRC

General features:

- lightweight, modern, perforated S1 safety shoe
- made from synthetic materials, so suitable for people allergic to chrome
- all sole materials are free of silicones, plasticisers and other paint wetting impairment substances

Protection features:

- meets the ESD specification with volume resistance under 35 megaohms
- 100% metal-free uvex xenova® safety toe cap – compact design, anatomical shape, good lateral stability, no thermal conductivity
- ergonomically designed outsole made from dual density polyurethane with excellent slip resistance
- reflective elements for better visibility

Comfort features:

- lightweight with excellent shock-absorbing properties
- outstanding wearer comfort thanks to a newly developed last and climate-optimised, breathable materials, plus perforated upper
- removable antistatic comfortable insole, with a moisture transport system and additional shock absorption around the heel and fore-foot
- soft padding on tongue and collar

Areas of application:

- medium applications

uvex 2 xenova®	Perforated shoe S1 SRC			Perforated shoe S1 SRC			Perforated shoe S1 SRC		
Art. no.	95547	95548	95549	95607	95608	95609	95057	95058	95059
Width	10	11	12	10	11	12	10	11	12
Standard	EN ISO 20345:2011 S1 SRC								
Upper	microvelour								
Lining	distance mesh lining								
Sizes	38 to 52	38 to 52	38 to 52	38 to 52	38 to 52	38 to 52	38 to 52	38 to 52	38 to 52
Order unit	PR	PR	PR	PR	PR	PR	PR	PR	PR

Safety Footwear
uvex 2 xenova®



95581
95582
95583



uvex 2 xenova® · Perforated shoe S1 P SRC

General features:

- lightweight, modern, perforated S1 P safety shoe
- made from synthetic materials, so suitable for people allergic to chrome
- all sole materials are free of silicones, plasticisers and other paint wetting impairment substances
- Boa® Fit System (consisting of a micro-adjustable dial, super-strong lightweight laces and low friction lace guides) engineered to optimise fit and provide precision, adaptability, and control.

Protection features:

- meets the ESD specification with volume resistance under 35 megaohms
- 100% metal-free uvex xenova® safety toe cap – compact design, anatomical shape, good lateral stability, no thermal conductivity
- penetration-resistant, non-metallic midsole in accordance with the latest safety standards, does not restrict flexibility of the shoe
- ergonomically designed outsole made from dual density polyurethane with excellent slip resistance
- reflective elements for better visibility

Comfort features:

- lightweight with excellent shock-absorbing properties
- outstanding wearer comfort thanks to a newly developed last and climate-optimised, breathable materials, plus perforated upper
- removable antistatic comfortable insole, with a moisture transport system and additional shock absorption around the heel and forefoot
- soft padding on tongue and collar

Areas of application:
• medium applications

uvex 2 xenova®	Perforated shoe S1 P SRC		
Art. no.	95581	95582	95583
Width	10	11	12
Standard	EN ISO 20345:2011 S1 P SRC		
Upper	microvelour		
Lining	distance mesh lining		
Sizes	38 to 52	38 to 52	38 to 52
Order unit	PR	PR	PR

You can find more information on uvex medicare on pages 411 to 421

Safety Footwear

uvex 2 xenova®



uvex 2 xenova® • Shoe S2 SRC

General features:

- lightweight, modern S2 safety shoe
- made from synthetic materials, so suitable for people allergic to chrome
- all sole materials are free of silicones, plasticisers and other paint wetting impairment substances

Protection features:

- meets the ESD specification with volume resistance under 35 megaohms
- 100% metal-free uvex xenova® safety toe cap – compact design, anatomical shape, good lateral stability, no thermal conductivity
- ergonomically designed outsole made from dual density polyurethane with excellent slip resistance
- reflective elements for better visibility

Comfort features:

- lightweight with excellent shock-absorbing properties
- outstanding wearer comfort thanks to a newly developed last and climate-optimised, breathable materials
- removable antistatic comfortable insole, with a moisture transport system and additional shock absorption around the heel and fore-foot
- soft padding on dust tongue and collar

Areas of application:

- medium applications

uvex 2 xenova®	Shoe S2 SRC			Shoe S2 SRC			Shoe S2 SRC		
Art. no.	95577	95578	95579	95687	95688	95689	95087	95088	95089
Width	10	11	12	10	11	12	10	11	12
Standard	EN ISO 20345:2011 S2 SRC								
Upper	microvelour								
Lining	distance mesh lining								
Sizes	38 to 52	38 to 52	38 to 52	38 to 52	38 to 52	38 to 52	38 to 52	38 to 52	38 to 52
Order unit	PR	PR	PR	PR	PR	PR	PR	PR	PR

Safety Footwear

uvex 2 xenova®



95557
95558
95559

95647
95648
95649

95067
95068
95069



climazone

uvex 2 xenova® · Shoe S2 SRC

General features:

- extremely lightweight, versatile S2 safety shoe
- all sole materials are free of silicones, plasticisers and other paint wetting impairment substances
- heat-resistant loop lacing system

Protection features:

- meets the ESD specification with volume resistance under 35 megaohms
- 100% metal-free uvex xenova® safety toe cap – compact design, anatomical shape, good lateral stability, no thermal conductivity
- ergonomically designed outsole made from dual density polyurethane with excellent slip resistance
- reflective elements for better visibility

Comfort features:

- lightweight with excellent shock-absorbing properties
- outstanding wearer comfort thanks to a newly developed last and climate-optimised, breathable materials
- removable antistatic comfortable insole, with a moisture transport system and additional shock absorption around the heel and fore-foot
- soft padding on dust tongue and collar

Areas of application:

- medium applications

uvex 2 xenova®	Shoe S2 SRC			Shoe S2 SRC			Shoe S2 SRC		
Art. no.	95557	95558	95559	95647	95648	95649	95067	95068	95069
Width	10	11	12	10	11	12	10	11	12
Standard	EN ISO 20345:2011 S2 SRC								
Upper	water-repellent, full-grain leather								
Lining	distance mesh lining								
Sizes	38 to 52	38 to 52	38 to 52	38 to 52	38 to 52	38 to 52	38 to 52	38 to 52	38 to 52
Order unit	PR	PR	PR	PR	PR	PR	PR	PR	PR

Safety Footwear

uvex 2 xenova®



95567
95568
95569

95667
95668
95669

95077
95078
95079



climazone

uvex 2 xenova® · Lace-up boot S2 SRC

General features:

- extremely lightweight, versatile S2 lace-up safety boot
- all sole materials are free of silicones, plasticisers and other paint wetting impairment substances
- heat-resistant loop lacing system and two pairs of lacing hooks

Protection features:

- meets the ESD specification with volume resistance under 35 megaohms
- 100% metal-free uvex xenova® safety toe cap – compact design, anatomical shape, good lateral stability, no thermal conductivity
- ergonomically designed outsole made from dual density polyurethane with excellent slip resistance
- reflective elements for better visibility

Comfort features:

- lightweight with excellent shock-absorbing properties
- outstanding wearer comfort thanks to a newly developed last and climate-optimised, breathable materials
- removable antistatic comfortable insole, with a moisture transport system and additional shock absorption around the heel and fore-foot
- soft padding on dust tongue and collar

Areas of application:

- medium applications

uvex 2 xenova®	Lace-up boot S2 SRC			Lace-up boot S2 SRC			Lace-up boot S2 SRC		
Art. no.	95567	95568	95569	95667	95668	95669	95077	95078	95079
Width	10	11	12	10	11	12	10	11	12
Standard	EN ISO 20345:2011 S2 SRC								
Upper	water-repellent, full-grain leather								
Lining	distance mesh lining								
Sizes	38 to 52	38 to 52	38 to 52	38 to 52	38 to 52	38 to 52	38 to 52	38 to 52	38 to 52
Order unit	PR	PR	PR	PR	PR	PR	PR	PR	PR

Safety Footwear

uvex 2 xenova®



95551
95552
95553

95641
95642
95643

95061
95062
95063



uvex 2 xenova® · Shoe S3 SRC

General features:

- extremely lightweight, versatile S3 safety shoe
- upper over the toe cap lasts longer thanks to the PU-coated leather scuffcap
- all sole materials are free of silicones, plasticisers and other paint wetting impairment substances
- heat-resistant loop lacing system

Protection features:

- meets the ESD specification with volume resistance under 35 megaohms
- 100% metal-free uvex xenova® safety toe cap – compact design, anatomical shape, good lateral stability, no thermal conductivity
- penetration-resistant, non-metallic midsole in accordance with the latest safety standards, does not restrict flexibility of the shoe
- ergonomically designed outsole made from dual density polyurethane with excellent slip resistance
- reflective elements for better visibility

Comfort features:

- lightweight with excellent shock-absorbing properties
- outstanding wearer comfort thanks to a newly developed last and climate-optimised, breathable materials
- removable antistatic comfortable insole, with a moisture transport system and additional shock absorption around the heel and forefoot
- soft padding on dust tongue and collar

Areas of application:

- medium applications

uvex 2 xenova®	Shoe S3 SRC			Shoe S3 SRC			Shoe S3 SRC		
Art. no.	95551	95552	95553	95641	95642	95643	95061	95062	95063
Width	10	11	12	10	11	12	10	11	12
Standard	EN ISO 20345:2011 S3 SRC								
Upper	water-repellent, full-grain leather								
Lining	distance mesh lining								
Sizes	38 to 52	38 to 52	38 to 52	38 to 52	38 to 52	38 to 52	38 to 52	38 to 52	38 to 52
Order unit	PR	PR	PR	PR	PR	PR	PR	PR	PR

Safety Footwear

uvex 2 xenova®



95561
95562
95563

95661
95662
95663

95071
95072
95073



climazone

uvex 2 xenova® · Lace-up boot S3 SRC

General features:

- extremely lightweight, versatile S3 lace-up safety boot
- upper over the toe cap lasts longer thanks to the PU-coated leather scuffcap
- all sole materials are free of silicones, plasticisers and other paint wetting impairment substances
- heat-resistant loop lacing system and two pairs of lacing hooks

Protection features:

- meets the ESD specification with volume resistance under 35 megaohms
- 100% metal-free uvex xenova® safety toe cap – compact design, anatomical shape, good lateral stability, no thermal conductivity
- penetration-resistant, non-metallic midsole in accordance with the latest safety standards, does not restrict flexibility of the shoe
- ergonomically designed outsole made from dual density polyurethane with excellent slip resistance
- reflective elements for better visibility

Comfort features:

- lightweight with excellent shock-absorbing properties
- outstanding wearer comfort thanks to a newly developed last and climate-optimised, breathable materials
- removable antistatic comfortable insole, with a moisture transport system and additional shock absorption around the heel and forefoot
- soft padding on dust tongue and collar

Areas of application:

- medium applications

uvex 2 xenova®	Lace-up boot S3 SRC			Lace-up boot S3 SRC			Lace-up boot S3 SRC		
Art. no.	95561	95562	95563	95661	95662	95663	95071	95072	95073
Width	10	11	12	10	11	12	10	11	12
Standard	EN ISO 20345:2011 S3 SRC								
Upper	water-repellent, full-grain leather								
Lining	distance mesh lining								
Sizes	38 to 52	38 to 52	38 to 52	38 to 52	38 to 52	38 to 52	38 to 52	38 to 52	38 to 52
Order unit	PR	PR	PR	PR	PR	PR	PR	PR	PR

uvex 2 trend – safety and comfort redefined

Add a splash of colour to your day.

Whether in the assembly hall or on the production line, indoors or outdoors:

uvex 2 trend safety footwear range is suitable for medium applications (S1-S3) and incorporates numerous proven technologies at an affordable price. The uvex anti-twist heel cap for increased stability to prevent ankle twisting and the high-quality outsole materials combined with a sporty look and bold colours make this footwear appealing to wear. The result: maximum comfort and reliable safety.



Affordable Quality and Comfort

Sporty design

Contemporary colours and a long, flexible lacing area give the uvex 2 trend range a sporty look and a high degree of wearer acceptance.

Greater visibility

Reflective elements provide greater visibility – and therefore safety – even in poor light conditions.

Pleasant foot climate

The breathable, chrome-free microvelour material ensures a pleasant foot climate at all times, even during prolonged periods of use.

climazone



Orthopaedic solutions in accordance with German DGUV 112-191* and Austrian ONORM Z1259



You can find more information at www.uvex-safety.com/uvex2trend



First-class wearer comfort

The midsole follows the lines of the arch, making the safety shoes especially comfortable to wear.



Safe slip resistance

The ergonomic design of the outsole supports the natural rolling motion of the foot. The new outsole profiles offer the best grip on almost any surface.



Sturdy scuffcap **

The directly moulded PU scuffcap on the S3 version reliably protects the upper against wear, especially during tasks that require kneeling.



Reliable protection against twisting

The innovative uvex anti-twist heel cap gives the foot extra support to avoid painful twisting.

* formerly BGR 191

** on selected models



Safety Footwear
uvex 2 trend



69367
69368
69369



uvex 2 trend - Sandal S1 SRC

General features:

- sporty S1 safety sandal with a wide fit
- breathable microvelour is made from synthetic materials, so suitable for people allergic to chrome
- all sole materials are free of silicones, plasticisers and other paint wetting impairment substances
- double, individually adjustable counter-traction hook and loop straps

Protection features:

- meets the ESD specification with volume resistance under 35 megaohms
- reliable protection for the wearer and material: steel toe cap and stabilising uvex anti-twist heel cap to prevent ankle twisting
- ergonomically designed outsole made from dual density polyurethane with excellent slip resistance
- reflective elements for better visibility

Comfort features:

- ideal foot climate constantly maintained due to uvex climazone: highly breathable lining and upper with perforation and comfortable climatic insole with moisture transport system
- soft, comfortable fit with no pressure points – with soft padding on the collar and a padded tongue
- removable antistatic comfortable insole, with a moisture transport system and additional shock absorption around the heel and forefoot

Areas of application:

- medium applications

uvex 2 trend	Sandal S1 SRC		
Art. no.	69367	69368	69369
Width	10	11	12
Standard	EN ISO 20345:2011 S1 SRC		
Upper	microvelour		
Lining	distance mesh lining		
Sizes	36 to 52	36 to 52	36 to 52
Order unit	PR	PR	PR

Safety Footwear

uvex 2 trend



69361
69362
69363

69061
69062
69063

69461
69462
69463



uvex 2 trend · Sandal S1 P SRC

General features:

- sporty S1 P safety sandal with a wide fit
- breathable microvelour is made from synthetic materials, so suitable for people allergic to chrome
- all sole materials are free of silicones, plasticisers and other paint wetting impairment substances
- double, individually adjustable counter-traction hook and loop straps

Protection features:

- meets the ESD specification with volume resistance under 35 megaohms
- reliable protection for the wearer and material: penetration-resistant steel midsole, steel toe cap and stabilising uvex anti-twist heel cap to prevent ankle twisting
- ergonomically designed outsole made from dual density polyurethane with excellent slip resistance
- reflective elements for better visibility

Comfort features:

- ideal foot climate constantly maintained due to uvex climazone: highly breathable lining and upper with perforation and comfortable climatic insole with moisture transport system
- soft, comfortable fit with no pressure points – with soft padding on the collar and a padded tongue
- removable antistatic comfortable insole, with a moisture transport system and additional shock absorption around the heel and forefoot

Areas of application:

- medium applications



uvex 2 trend	Sandal S1 P SRC			Sandal S1 P SRC			Sandal S1 P SRC		
Art. no.	69361	69362	69363	69061	69062	69063	69461	69462	69463
Width	10	11	12	10	11	12	10	11	12
Standard	EN ISO 20345:2011 S1 P SRC								
Upper	microvelour								
Lining	distance mesh lining								
Sizes	36 to 52	36 to 52	36 to 52	38 to 52	38 to 52	38 to 52	38 to 52	38 to 52	38 to 52
Order unit	PR	PR	PR	PR	PR	PR	PR	PR	PR

Safety Footwear

uvex 2 trend



69377
69378
69379



69077
69078
69079



69477
69478
69479



uvex 2 trend · Perforated shoe S1 SRC

General features:

- sporty S1 safety shoe with a wide fit
- breathable microvelour is made from synthetic materials, so suitable for people allergic to chrome
- all sole materials are free of silicones, plasticisers and other paint wetting impairment substances

Protection features:

- meets the ESD specification with volume resistance under 35 megaohms
- reliable protection for the wearer and material: steel toe cap and stabilising uvex anti-twist heel cap to prevent ankle twisting
- ergonomically designed outsole made from dual density polyurethane with excellent slip resistance
- reflective elements for better visibility

Comfort features:

- ideal foot climate constantly maintained due to uvex climazone: highly breathable lining and upper with perforation and comfortable climatic insole with moisture transport system
- soft, comfortable fit with no pressure points – with soft padding on the collar and a padded tongue
- removable antistatic comfortable insole, with a moisture transport system and additional shock absorption around the heel and forefoot

Areas of application:

- medium applications

uvex 2 trend	Perforated shoe S1 SRC			Perforated shoe S1 SRC			Perforated shoe S1 SRC		
Art. no.	69377	69378	69379	69077	69078	69079	69477	69478	69479
Width	10	11	12	10	11	12	10	11	12
Standard	EN ISO 20345:2011 S1 SRC								
Upper	microvelour								
Lining	distance mesh lining								
Sizes	36 to 52	36 to 52	36 to 52	38 to 52	38 to 52	38 to 52	38 to 52	38 to 52	38 to 52
Order unit	PR	PR	PR	PR	PR	PR	PR	PR	PR

Safety Footwear

uvex 2 trend



69381
69382
69383



69081
69082
69083



climazone BOA

uvex 2 trend · Perforated shoe S1 P SRC

General features:

- sporty S1 P safety sandal with a wide fit
- breathable microvelour is made from synthetic materials, so suitable for people allergic to chrome
- all sole materials are free of silicones, plasticisers and other paint wetting impairment substances
- Boa® Fit System (consisting of a micro-adjustable dial, super-strong lightweight laces and low friction lace guides) engineered to optimise fit and provide precision, adaptability, and control.

Protection features:

- meets the ESD specification with volume resistance under 35 megaohms
- reliable protection for the wearer and material: penetration-resistant steel midsole, steel toe cap and stabilising uvex anti-twist heel cap to prevent ankle twisting
- ergonomically designed outsole made from dual density polyurethane with excellent slip resistance
- reflective elements for better visibility

Comfort features:

- ideal foot climate constantly maintained due to uvex climazone: highly breathable lining and upper with perforation and comfortable climatic insole with moisture transport system
- soft, comfortable fit with no pressure points – with soft padding on the collar and a padded tongue
- removable antistatic comfortable insole, with a moisture transport system and additional shock absorption around the heel and forefoot

Areas of application:

- medium applications



uvex 2 trend	Perforated shoe S1 P SRC			Perforated shoe S1 P SRC		
Art. no.	69381	69382	69383	69081	69082	69083
Width	10	11	12	10	11	12
Standard	EN ISO 20345:2011 S1 P SRC					
Upper	microvelour					
Lining	distance mesh lining					
Sizes	36 to 52	36 to 52	36 to 52	38 to 52	38 to 52	38 to 52
Order unit	PR	PR	PR	PR	PR	PR

Safety Footwear

uvex 2 trend



uvex 2 trend · Shoe S2 SRC

General features:

- sporty S2 safety shoe with a wide fit
- breathable microvelour is made from synthetic materials, so suitable for people allergic to chrome
- all sole materials are free of silicones, plasticisers and other paint wetting impairment substances

Protection features:

- meets the ESD specification with volume resistance under 35 megaohms
- reliable protection for the wearer and material: steel toe cap and stabilising uvex anti-twist heel cap to prevent ankle twisting
- ergonomically designed outsole made from dual density polyurethane with excellent slip resistance
- reflective elements for better visibility

Comfort features:

- ideal foot climate constantly maintained due to uvex climazone: highly breathable lining and upper, and comfortable climatic insole with moisture transport system
- soft, comfortable fit with no pressure points – with soft padding on the collar and a padded tongue
- removable antistatic comfortable insole, with a moisture transport system and additional shock absorption around the heel and forefoot

Areas of application:

- medium applications

uvex 2 trend	Shoe S2 SRC			Shoe S2 SRC			Shoe S2 SRC		
Art. no.	69397	69398	69399	69097	69098	69099	69497	69498	69499
Width	10	11	12	10	11	12	10	11	12
Standard	EN ISO 20345:2011 S2 SRC								
Upper	microvelour								
Lining	distance mesh lining								
Sizes	36 to 52	36 to 52	36 to 52	38 to 52	38 to 52	38 to 52	38 to 52	38 to 52	38 to 52
Order unit	PR	PR	PR	PR	PR	PR	PR	PR	PR

Safety Footwear

uvex 2 trend



69341
69342
69343

69347
69348
69349

69351
69352
69353

69357
69358
69359



uvex 2 trend · Shoe S2/S3 SRC · Lace-up boot S2/S3 SRC

General features:

- sporty S2 and S3 safety shoe/boot with a wide fit
- all sole materials are free of silicones, plasticisers and other paint wetting impairment substances
- dirt-resistant, smooth-running and heat-resistant lacing system
- upper over the toe cap is protected by the foamed scuffcap (S3 models)

Protection features:

- meets the ESD specification with volume resistance under 35 megaohms
- reliable protection for the wearer and material: penetration-resistant steel midsole (S3 models), steel toe cap and stabilising uvex anti-twist heel cap to prevent ankle twisting
- ergonomically designed outsole made from dual density polyurethane with excellent slip resistance
- reflective elements for better visibility

Comfort features:

- ideal foot climate constantly maintained due to uvex climazone: highly breathable lining and upper, and comfortable climatic insole with moisture transport system
- soft, comfortable fit with no pressure points – with soft padding on the collar and a padded tongue
- removable antistatic comfortable insole, with a moisture transport system and additional shock absorption around the heel and forefoot

Areas of application:

- medium applications



uvex 2 trend	Shoe S2 SRC			Lace-up boot S2 SRC		
Art. no.	69347	69348	69349	69357	69358	69359
Width	10	11	12	10	11	12
Standard	EN ISO 20345:2011 S2 SRC			EN ISO 20345:2011 S2 SRC		
Upper	Full-grain soft leather			Full-grain soft leather		
Lining	distance mesh lining			distance mesh lining		
Sizes	36 to 52	36 to 52	36 to 52	36 to 52	36 to 52	36 to 52
Order unit	PR	PR	PR	PR	PR	PR

uvex 2 trend	Shoe S3 SRC			Lace-up boot S3 SRC		
Art. no.	69341	69342	69343	69351	69352	69353
Width	10	11	12	10	11	12
Standard	EN ISO 20345:2011 S3 SRC			EN ISO 20345:2011 S3 SRC		
Upper	Full-grain soft leather			Full-grain soft leather		
Lining	distance mesh lining			distance mesh lining		
Sizes	36 to 52	36 to 52	36 to 52	36 to 52	36 to 52	36 to 52
Order unit	PR	PR	PR	PR	PR	PR

uvex

uvex quatro STX

Extremely robust.
Even in wet conditions.

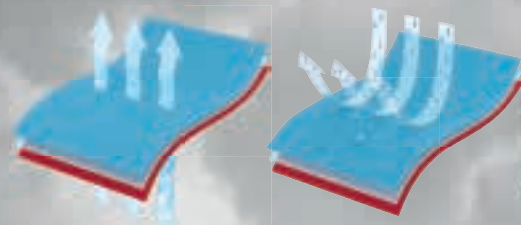


The SympaTex® membrane:

- 100% waterproof
- maximum breathability
- durable

BREATHABLE

WATERPROOF



Feet remain dry even under extreme conditions:
The uvex quatro STX reliably prevents the penetration of water thanks to its SympaTex® membrane, at the same time ensuring a superior foot climate due to the high level of breathability – the perfect combination between protection and wearer comfort.

uvex quatro STX sole

- dual component PU / rubber sole for outdoor use
- outstanding comfort underfoot thanks to ultra soft, shock-absorbing midsole and non-slip rubber outsole
- extremely cut-resistant

- temperature-resistance of outsole for brief exposure up to +300°C
- suitable for general use on almost all surfaces and in a very broad temperature range of -20°C for brief exposure up to +300°C

- resistant to most chemicals
- excellent slip resistance even on damp and oily surfaces
- antistatic
- HI, CI, HRO, SRC



Safety Footwear

uvex quatro STX



84062



84072



climazone

uvex quatro STX · Shoe S3 WR HI CI HRO SRC · Lace-up boot S3 WR HI CI HRO SRC

General features:

- robust and modern waterproof safety shoe/ boot in S3 WR with extra-wide fit
- smooth-running, dirt-resistant lacing system
- highly resistant, water-repellent leather upper with foam scuffcap that also helps protect the material

Protection features:

- Waterproof and breathable thanks to SympaTex® lining (WR marking)
- dual-component sole, comprising shock-absorbing PU midsole and resistant, anti-slip rubber outsole
- outsole is highly resistant to chemicals and cut-resistant while also providing optimal protection against cold and heat
- reliable protection for wearers: penetration-resistant steel midsole, steel toe cap and the stabilising heel cap to prevent ankle twisting
- HI marking for heat-insulating substructure (tested in accordance with standard at +150°C)
- CI label for cold-insulating footwear design
- HRO marking for heat-resistant substructure for brief exposure up to +300°C

Comfort features:

- ideal foot climate constantly maintained due to uvex climazone: breathable SympaTex® membrane lining and comfortable climatic insole with moisture transport system
- breathable yet waterproof thanks to SympaTex® lining
- soft, padded collar (boot), soft, padded collar (shoe) and padded dust tongue
- removable antistatic insole for optimum foot support

Areas of application:

- heavy-duty applications



uvex quatro STX	Shoe S3 WR HI CI HRO SRC	Lace-up boot S3 WR HI CI HRO SRC
Art. no.	84062	84072
Width	11	11
Standard	EN ISO 20345:2011 S3 WR HI CI HRO SRC	EN ISO 20345:2011 S3 WR HI CI HRO SRC
Upper	sturdy water-repellent nappa leather	sturdy water-repellent nappa leather
Lining	SympaTex® laminate	SympaTex® laminate
Sizes	38 to 48	38 to 48
Order unit	PR	PR

► uvex recommends footwear with steel midsoles for demanding applications such as construction and construction-related industries.

Safety Footwear
uvex quatro pro



uvex quatro pro · Shoe S3 SRC · Lace-up boot S3 SRC

- General features:
- sturdy, modern shoe and lace-up boot with extra wide fit
 - smooth-running, dirt-resistant lacing system
- Protection features:
- highly resistant, water-repellent upper leather with foam scuffcap helps protect the upper
 - outdoor sole design provides a high level of stability with a heel brace, support in the arch area and a rough, non-slip, self-cleaning tread
 - reliable protection for wearers: penetration-resistant steel midsole, steel toe cap and stabilising uvex anti-twist heel cap to prevent ankle twisting

- Comfort features:
- ideal foot climate constantly maintained due to uvex climazone: breathable textile lining and comfortable climatic insole with a moisture transport system
 - soft, padded collar and padded dust tongue
 - antistatic uvex 3D hydroflex® foam insole for optimal shock absorption around heel and forefoot

- Areas of application:
- heavy application

uvex quatro pro · sole

- dual-density PU outdoor sole
- extremely comfortable underfoot due to particularly soft midsole and stable PU outsole
- highly effective non-slip properties due to special tread design
- support in the arch area when climbing
- integrated PU scuffcap and PU heel cap to protect leather upper
- side stabilisers to prevent ankle twisting
- outsole is heat-resistant to +120°C
- antistatic
- oil and petrol-resistant
- silicone-free
- self-cleaning tread

► uvex recommends footwear with steel midsoles for demanding applications such as construction and construction-related industries.

uvex quatro pro	Shoe S3 SRC	Lace-up boot S3 SRC
Art. no.	84002	84012
Width	11	11
Standard	EN ISO 20345:2011 S3 SRC	EN ISO 20345:2011 S3 SRC
Upper	sturdy water-repellent leather upper	sturdy water-repellent leather upper
Lining	textile lining	textile lining
Sizes	38 to 50	38 to 50
Order unit	PR	PR

Safety Footwear

uvex quatro pro



84022



84032

84039



climazone

uvex quatro pro · Winter lace-up boot S3 CI SRC · Winter zip-up boot S3 CI SRC/S2 CI SRC

General features:

- sturdy, modern S2/S3 winter lace-up boot and zip-up boot with extra wide fit
- smooth-running, dirt-resistant lacing system (84022)

Protection features:

- highly resistant, water-repellent leather upper with foam scuffcap helps protect the upper
- outdoor sole design provides a high level of stability with a heel brace, support in the arch area and a rough, non-slip, self-cleaning tread
- reliable protection for people and material: penetration-resistant steel midsole (S3 models), steel toe cap and stabilising uvex anti-twist heel cap help prevent ankle twisting
- cold-insulating shoe design (CI label in accordance with EN ISO 20345)

Comfort features:

- ideal foot climate constantly maintained due to uvex climazone: insulating warm lining and comfortable climatic insole with moisture transport system
- soft, padded collar and dust tongue (84022)
- easy to put on and take off with the zip fastener on the inside (84032, 84039)
- antistatic uvex 3D hydroflex® foam insole for optimal shock absorption around the heel and forefoot

Areas of application:

- heavy application



► uvex recommends footwear with steel midsoles for demanding applications such as construction and construction-related industries.

uvex quatro pro	Winter lace-up boot S3 CI SRC	Zip-up winter boot S3 CI SRC	Zip-up winter boot S2 CI SRC
Art. no.	84022	84032	84039
Width	11	11	11
Standard	EN ISO 20345:2011 S3 CI SRC	EN ISO 20345:2011 S3 CI SRC	EN ISO 20345:2011 S2 CI SRC
Upper	sturdy water-repellent leather upper	sturdy water-repellent leather upper	sturdy water-repellent leather upper
Lining	fleece lining	fleece lining	fleece lining
Sizes	38 to 50	38 to 50	38 to 50
Order unit	PR	PR	PR

Safety Footwear

Accessories · Inlay soles



95281
95284
95287



LOW

Art. no. 95281
Art. no. 95284
Art. no. 95287
Sizes 35 to 52



95282
95285
95288



MEDIUM

Art. no. 95282
Art. no. 95285
Art. no. 95288
Sizes 35 to 52



95283
95286
95289



HIGH

Art. no. 95283
Art. no. 95286
Art. no. 95289
Sizes 35 to 52



climazone

Comfortable tune-up

Antistatic insole concept for use in safety footwear. Designed to increase wearer comfort and enhance ergonomics by providing optimum support for the arches of the feet, helping to reduce foot fatigue.

- three different arch support versions: High, Medium, Low
- very good cushioning for comfort underfoot
- reduces symptoms of fatigue
- prevents pressure points
- non-irritating, comfortable surface structure
- breathable and absorbs moisture
- anti-bacterial
- antistatic
- suitable for ESD footwear
- hand-washable at 30°C
- certified for use in the following uvex safety shoes

Comfortable tune-up			
Art. no.	95281	95282	95283
Sizes	35 to 52	35 to 52	35 to 52
Version	certified for the following uvex		
	safety footwear in accordance with EN ISO 20345:2011:		
	uvex 1, uvex 2, uvex 2 VIBRAM®, uvex 2 xenova®		
Order unit	PR	PR	PR

Comfortable tune-up			
Art. no.	95284	95285	95286
Sizes	35 to 52	35 to 52	35 to 52
Version	certified for the following uvex		
	safety footwear in accordance with EN ISO 20345:2011:		
	uvex 1 sport		
Order unit	PR	PR	PR

Comfortable tune-up			
Art. no.	95287	95288	95289
Sizes	35 to 52	35 to 52	35 to 52
Version	certified for the following uvex		
	safety footwear in accordance with EN ISO 20345:2011:		
	uvex 1 G2		
Order unit	PR	PR	PR

Safety Footwear

Accessories · Inlay soles



Comfortable climatic insole uvex 1 · uvex 2 · uvex 2 VIBRAM® · uvex 2 xenova®

- full-surface shock absorption
- ultra breathable and moisture-absorbing materials
- perforated for improved breathability
- shock absorption zones support natural foot movement
- non-irritating, comfortable surface structure
- antistatic properties
- arch support

Comfortable climatic insole uvex 1, uvex 2, uvex 2 VIBRAM®, uvex 2 xenova®				
Art. no.	95347	95348	95349	95340
Sizes	35 to 52	35 to 52	35 to 52	35 to 52
Version	for uvex 1, uvex 2, uvex 2 VIBRAM®, uvex 2 xenova®	for uvex 1, uvex 2, uvex 2 VIBRAM®, uvex 2 xenova®	for uvex 1, uvex 2, uvex 2 VIBRAM®, uvex 2 xenova®	for uvex 1, uvex 2, uvex 2 VIBRAM®, uvex 2 xenova®
Width	Width 10	Width 11	Width 12	Width 14
Order unit	PR	PR	PR	PR



Comfortable climatic insole uvex 1 G2

- improved full-surface shock absorption
- ultra-breathable, moisture-absorbing and quick-drying materials
- shock absorption zones support natural movement of the foot
- non-irritating, comfortable surface structure
- antistatic properties
- arch support
- washable, hand wash at 30°C

Comfortable climatic insole uvex 1 G2				
Art. no.	94907	94908	94909	94900
Sizes	35 to 52	35 to 52	35 to 52	35 to 52
Version	for uvex 1 G2	for uvex 1 G2	for uvex 1 G2	for uvex 1 G2
Width	Width 10	Width 11	Width 12	Width 14
Order unit	PR	PR	PR	PR



Comfortable climatic insole uvex 1 sport

- full-surface shock absorption
- ultra breathable and moisture-absorbing materials
- shock absorption zones support natural foot movement
- non-irritating, comfortable surface structure
- antistatic properties
- arch support

Comfortable climatic insole uvex 1 sport				
Art. no.	95797	95798	95799	95790
Sizes	35 to 52	35 to 52	35 to 52	35 to 52
Version	for uvex 1 sport, uvex 1 sport hygiene	for uvex 1 sport, uvex 1 sport hygiene	for uvex 1 sport, uvex 1 sport hygiene	for uvex 1 sport
Width	Width 10	Width 11	Width 12	Width 14
Order unit	PR	PR	PR	PR

Safety Footwear

Accessories · Inlay soles



Comfortable climatic insole uvex 1 business

- full-surface shock absorption
- ultra breathable and moisture-absorbing materials
- shock absorption zones support natural foot movement
- non-irritating, comfortable surface structure
- antistatic properties
- arch support

Comfortable climatic insole uvex 1 business			
Art. no.	95157	95158	95159
Sizes	39 to 52	39 to 52	39 to 52
Version	for uvex 1 business	for uvex 1 business	for uvex 1 business
	Width 10	Width 11	Width 12
Order unit	PR	PR	PR



Comfortable climatic insole uvex 1 sport NC

- full-surface shock absorption
- ultra breathable and moisture-absorbing materials
- shock absorption zones support natural foot movement
- non-irritating, comfortable surface structure
- antistatic properties
- arch support

Comfortable climatic insole uvex 1 sport NC			
Art. no.	95177	95178	95179
Sizes	35 to 52	35 to 52	35 to 52
Version	for uvex 1 sport NC	for uvex 1 sport NC	for uvex 1 sport NC
	Width 10	Width 11	Width 12
Order unit	PR	PR	PR

► For precise information on the certification of certain replacement insole and safety footwear combinations, please turn to the detailed overview on pages 348 to 353

Safety Footwear

Accessories · Inlay soles



95187



95188



95189

climazone

Comfortable climatic insole uvex 2 trend

- full-surface shock absorption
- ultra breathable and moisture-absorbing materials
- shock absorption zones support natural foot movement
- non-irritating, comfortable surface structure
- antistatic properties
- arch support

Comfortable climatic insole uvex 2 trend

Art. no.	95187	95188	95189
Sizes	36 to 52	36 to 52	36 to 52
Version	for uvex 2 trend Width 10	for uvex 2 trend Width 11	for uvex 2 trend Width 12
Order unit	PR	PR	PR


95954
95956

climazone

Comfortable climatic insole uvex 3D hydroflex® foam

- full shock absorption for the foot with additional shock-absorbing elements around the heel and under the forefoot to ensure comfort in exposed pressure zones
- ultra breathable and moisture-absorbent materials
- perforation for improved breathability
- shock absorption zones support natural foot movement
- non-irritating, comfortable surface structure
- antistatic properties
- arch support

Comfortable climatic insole uvex 3D hydroflex® foam			
Art. no.	95954	95956	
Sizes	38 to 50	35 to 50	
Version	for uvex origin and uvex quatro pro	for uvex motion style width 11	
Order unit	PR	PR	



95388

climazone

Comfortable climatic insole

- full-surface shock absorption
- ultra breathable and moisture-absorbing materials
- perforated for improved breathability
- shock absorption zones support natural foot movement
- non-irritating, comfortable surface structure
- antistatic properties
- arch support

Comfortable climatic insole	
Art. no.	95388
Sizes	38 to 48
Version	for uvex business casual
Order unit	PR



Safety Footwear

uvex care system



uvex nano shoe add on

footwear waterproofing for protection against moisture penetration and stains

The principle

Water-based uvex nano shoe "add on" waterproofing forms a colourless, invisible film on leather and textile surfaces which protects footwear from moisture penetration and water or oil stains. Although the technological expertise owes its origins to chemical nanotechnology, the product contains no actual nano particles. uvex nano shoe 'add on' makes footwear surfaces smooth so, that liquids simply run off. It does not alter the look or breathability of the impregnated material, irrespective of whether this is suede,

leather or textile. Contains no aggressive ingredients which might attack footwear surfaces.

How it works

- Protects from moisture penetration:
The speed at which moisture penetrates leather or textile surfaces which have been treated is significantly reduced. Water and oil simply run off.
- Maintains breathability:
uvex nano shoe 'add on' waterproofing does not affect the breathability of footwear surface materials.
- Improves cleaning
Footwear surfaces impregnated with uvex nano shoe 'add on' can be more easily cleaned, since water and oil stains cannot penetrate deep into the fabric.
- Long-lasting stain prevention:
Regular applications will significantly reduce repeated staining from water or oil-based liquids.

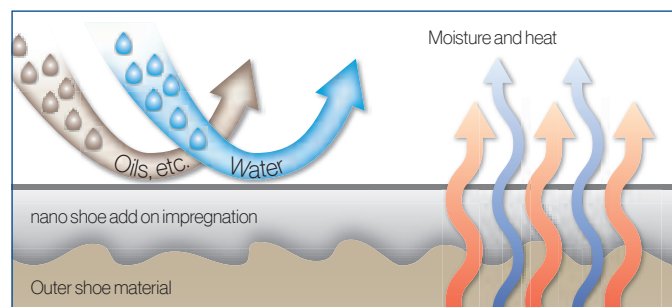
- No change to the look or feel of the surface:

The look or feel of footwear is not altered by the neutral uvex shoe 'add on' waterproofing. uvex nano shoe 'add on' is free from formaldehyde and phenol and contains no nano particles.

Application

- Clean leather and textile surfaces thoroughly beforehand
- Shake solution before use, then spray onto material to form a thin film over the surface (avoid drips forming)
- If necessary, wipe over excess liquid with a cloth to spread evenly
- Leave to dry at room temperature for at least 12 hours
- Repeat treatment as above when needed to maintain the effect

The nano shoe add on working principle



uvex nano shoe add on	
Art. no.	9698100
Content	100 ml
Order unit	PC



uvex nano shoe add in:

footwear disinfectant against foot odour and athlete's foot

The principle

uvex nano shoe 'add in' uses specially developed technology which releases controlled doses of active ingredients with long-lasting effect: The uvex nano shoe 'add in' disinfectant contains antimicrobial and antifungal active ingredients which eliminate bacteria and fungus over the longer term. Although this expertise owes its origins to chemical nanotechnology, the uvex nano shoe

'add in' does not contain any actual nano particles: The formula contains only active ingredients which are approved for use for a number of years and can be found in cosmetics (formaldehyde-free, phenol-free).

How it works

- Odour prevention:
Regular application of uvex nano shoe 'add in' in new shoes will prevent any build-up of odour from the outset. Unlike deodorants, which simply cover sweaty smells, this product deals with the underlying causes: bacteria.
- Ongoing deodorization:
Application of uvex nano shoe 'add in' will return footwear that has already been well worn to odour-neutral conditions.

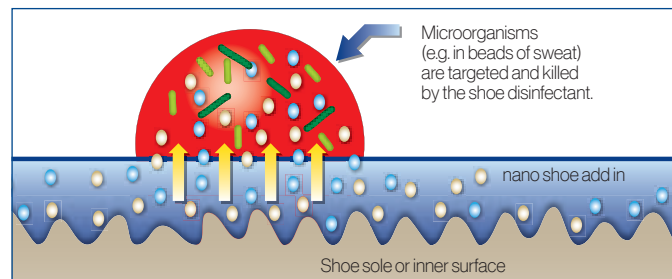
- Kills fungi:
Filamentous or yeast fungi are among the most common causes of skin diseases (such as athlete's foot) affecting the feet. uvex nano shoe 'add in' kills existing fungi and prevents reoccurrence.

Application

- For use on the inside surfaces of all footwear
- Spray uvex nano shoe 'add in' (about 5-10 doses) into your footwear outside in the open air. After 15 minutes drying time, your shoes will be ready to wear
- Recommended initial treatment of badly affected footwear: three applications per week
- Regular use will prevent odours and fungus developing in the longer term

The nano shoe add in working principle

Controlled release of germicidal agents to protect against foot odour and athletes foot



uvex nano shoe add in	
Art. no.	9698300
Content	125 ml
Order unit	PC

Safety Footwear

Polymer boot · Accessories



94756



94766



98754

NORA safety boots S5 SRC

General features:

- long PVC safety boot

Protection features:

- free of plasticisers included on the SVHC Candidate List of the REACH Regulation
- resistant to oil, grease, fuel, alkalis, acids and disinfectants
- with steel toecap and midsole
- toe and heel reinforcements plus ankle protection
- antistatic

Comfort features:

- anatomically shaped lasts, prevent foot fatigue
- leg height 33 cm (for size 42 boot)
- long shaft, can be shortened
- anatomically shaped insole
- pull-off aid

uvex tricot liner socks

General features:

- kind to the skin
- extremely high level of moisture absorption
- washable at up to 30°C
- elastic



NORA safety boots S5 SRC		
Art. no.	94756	94766
Standard	EN ISO 20345:2011 S5 SRC	EN ISO 20345:2011 S5 SRC
Upper	PVC	PVC
Sizes	37 to 48	36 to 47
Order unit	PR	PR

uvex tricot liner socks	
Art. no.	98754
Sizes	39/40 to 47/48
Order unit	PR

Safety Footwear

Overview

Art. no.	Collection	EN ISO 20345	Sizes	Product	Replacement insole											Page
						steel midsole	uvex xenova® midsole	uvex climazone	uvex xenova® toe cap	ESD	lacquer-neutral	uvex medicare	ÖNorm Z 1259	SympaTex®	BOA	
64963	uvex motion 3XL	S3 SRC	35 to 50	Shoe	-											291
65001	uvex 2	S1 P SRC	35 to 52	Sandal, width 10	95347											316
65002	uvex 2	S1 P SRC	35 to 52	Sandal, width 11	95348											316
65003	uvex 2	S1 P SRC	35 to 52	Sandal, width 12	95349											316
65004	uvex 2	S1 P SRC	35 to 52	Sandal, width 14	95340											316
65011	uvex 2	S1 P SRC	35 to 52	Perforated Shoe, width 10	95347											316
65012	uvex 2	S1 P SRC	35 to 52	Perforated Shoe, width 11	95348											316
65013	uvex 2	S1 P SRC	35 to 52	Perforated Shoe, width 12	95349											316
65014	uvex 2	S1 P SRC	35 to 52	Perforated Shoe, width 14	95340											316
65021	uvex 2	S3 SRC	35 to 52	Shoe, width 10	95347											315
65022	uvex 2	S3 SRC	35 to 52	Shoe, width 11	95348											315
65023	uvex 2	S3 SRC	35 to 52	Shoe, width 12	95349											315
65024	uvex 2	S3 SRC	35 to 52	Shoe, width 14	95340											315
65031	uvex 2	S3 SRC	35 to 52	Lace-up boot, width 10	95347											315
65032	uvex 2	S3 SRC	35 to 52	Lace-up boot, width 11	95348											315
65033	uvex 2	S3 SRC	35 to 52	Lace-up boot, width 12	95349											315
65034	uvex 2	S3 SRC	35 to 52	Lace-up boot, width 14	95340											315
65081	uvex 2	S3 SRC	35 to 52	Shoe, width 10	95347											317
65082	uvex 2	S3 SRC	35 to 52	Shoe, width 11	95348											317
65083	uvex 2	S3 SRC	35 to 52	Shoe, width 12	95349											317
65084	uvex 2	S3 SRC	35 to 52	Shoe, width 14	95340											317
65091	uvex 2	S3 SRC	35 to 52	Lace-up boot, width 10	95347											317
65092	uvex 2	S3 SRC	35 to 52	Lace-up boot, width 11	95348											317
65093	uvex 2	S3 SRC	35 to 52	Lace-up boot, width 12	95349											317
65094	uvex 2	S3 SRC	35 to 52	Lace-up boot, width 14	95340											317
65201	uvex 2 VIBRAM®	S1 P HRO SRC	35 to 52	Sandal, width 10	95347											312
65202	uvex 2 VIBRAM®	S1 P HRO SRC	35 to 52	Sandal, width 11	95348											312
65203	uvex 2 VIBRAM®	S1 P HRO SRC	35 to 52	Sandal, width 12	95349											312
65204	uvex 2 VIBRAM®	S1 P HRO SRC	35 to 52	Sandal, width 14	95340											312
65211	uvex 2 VIBRAM®	S1 P HRO SRC	35 to 52	Perforated Shoe, width 10	95347											312
65212	uvex 2 VIBRAM®	S1 P HRO SRC	35 to 52	Perforated Shoe, width 11	95348											312
65213	uvex 2 VIBRAM®	S1 P HRO SRC	35 to 52	Perforated Shoe, width 12	95349											312
65214	uvex 2 VIBRAM®	S1 P HRO SRC	35 to 52	Perforated Shoe, width 14	95340											312
65221	uvex 2 VIBRAM®	S3 HI HRO SRC	35 to 52	Shoe, width 10	95347											310
65222	uvex 2 VIBRAM®	S3 HI HRO SRC	35 to 52	Shoe, width 11	95348											310
65223	uvex 2 VIBRAM®	S3 HI HRO SRC	35 to 52	Shoe, width 12	95349											310
65224	uvex 2 VIBRAM®	S3 HI HRO SRC	35 to 52	Shoe, width 14	95340											310
65231	uvex 2 VIBRAM®	S3 HI HRO SRC	35 to 52	Lace-up boot, width 10	95347											310
65232	uvex 2 VIBRAM®	S3 HI HRO SRC	35 to 52	Lace-up boot, width 11	95348											310
65233	uvex 2 VIBRAM®	S3 HI HRO SRC	35 to 52	Lace-up boot, width 12	95349											310
65234	uvex 2 VIBRAM®	S3 HI HRO SRC	35 to 52	Lace-up boot, width 14	95340											310
65241	uvex 2 STX VIBRAM®	S3 WR HI HRO SRC	35 to 52	Shoe, width 10	95347											309
65242	uvex 2 STX VIBRAM®	S3 WR HI HRO SRC	35 to 52	Shoe, width 11	95348											309
65243	uvex 2 STX VIBRAM®	S3 WR HI HRO SRC	35 to 52	Shoe, width 12	95349											309
65251	uvex 2 STX VIBRAM®	S3 WR HI HRO SRC	35 to 52	Lace-up boot, width 10	95347											309
65252	uvex 2 STX VIBRAM®	S3 WR HI HRO SRC	35 to 52	Lace-up boot, width 11	95348											309
65253	uvex 2 STX VIBRAM®	S3 WR HI HRO SRC	35 to 52	Lace-up boot, width 12	95349											309
65281	uvex 2 VIBRAM®	S3 HI HRO SRC	35 to 52	Shoe, width 10	95347											313
65282	uvex 2 VIBRAM®	S3 HI HRO SRC	35 to 52	Shoe, width 11	95348											313
65283	uvex 2 VIBRAM®	S3 HI HRO SRC	35 to 52	Shoe, width 12	95349											313
65284	uvex 2 VIBRAM®	S3 HI HRO SRC	35 to 52	Shoe, width 14	95340											313
65291	uvex 2 VIBRAM®	S3 HI HRO SRC	35 to 52	Lace-up boot, width 10	95347											313
65292	uvex 2 VIBRAM®	S3 HI HRO SRC	35 to 52	Lace-up boot, width 11	95348											313
65293	uvex 2 VIBRAM®	S3 HI HRO SRC	35 to 52	Lace-up boot, width 12	95349											313
65294	uvex 2 VIBRAM®	S3 HI HRO SRC	35 to 52	Lace-up boot, width 14	95340											313
65303	uvex 2 VIBRAM®	S3 CI HI HRO SRC	35 to 52	Winter lace-up boot, width 12	95349											311
65311	uvex 2 VIBRAM®	S3 HI HRO SRC	35 to 52	Shoe, width 10	95347											311
65312	uvex 2 VIBRAM®	S3 HI HRO SRC	35 to 52	Shoe, width 11	95348											311
65313	uvex 2 VIBRAM®	S3 HI HRO SRC	35 to 52	Shoe, width 12	95349											311
65341	uvex 2 STX VIBRAM®	S3 WR HI HRO SRC	35 to 52	Shoe, width 10	95347											309
65342	uvex 2 STX VIBRAM®	S3 WR HI HRO SRC	35 to 52	Shoe, width 11	95348											309
65343	uvex 2 STX VIBRAM®	S3 WR HI HRO SRC	35 to 52	Shoe, width 12	95349											309
65500	uvex 1	S1 SRC	35 to 52	Sandal, width 14	95340											282
65507	uvex 1	S1 SRC	35 to 52	Sandal, width 10	95347											282
65508	uvex 1	S1 SRC	35 to 52	Sandal, width 11	95348											282
65509	uvex 1	S1 SRC	35 to 52	Sandal, width 12	95349											282
65530	uvex 1	S1 SRC	35 to 52	Perforated Lace-up boot, width 14	95340											282
65537	uvex 1	S1 SRC	35 to 52	Perforated Lace-up boot, width 10	95347											282
65538	uvex 1	S1 SRC	35 to 52	Perforated Lace-up boot, width 11	95348											282
65539	uvex 1	S1 SRC	35 to 52	Perforated Lace-up boot, width 12	95349											282
65540	uvex 1	S2 SRC	35 to 52	Lace-up boot, width 14	95340											283
65547	uvex 1	S2 SRC	35 to 52	Lace-up boot, width 10	95347											283
65548	uvex 1	S2 SRC	35 to 52	Lace-up boot, width 11	95348											283
65549	uvex 1	S2 SRC	35 to 52	Lace-up boot, width 12	95349											283
65560	uvex 1	S1 SRC	35 to 52	Perforated Shoe, width 14	95340											282
65567	uvex 1	S1 SRC	35 to 52	Perforated Shoe, width 10	95347											282
65568	uvex 1	S1 SRC	35 to 52	Perforated Shoe, width 11	95348											282
65569	uvex 1	S1 SRC	35 to 52	Perforated Shoe, width 12	95349											282
65570	uvex 1	S2 SRC	35 to 52	Shoe, width 14	95340											283
65577	uvex 1	S2 SRC	35 to 52	Shoe, width 10	95347											283
65578	uvex 1	S2 SRC	35 to 52	Shoe, width 11	95348											283
65579	uvex 1	S2 SRC	35 to 52	Shoe, width 12	95349											283

You can find more information on uvex medicare on pages 411 to 421

Art. no.	Collection	EN ISO 20345/ EN EN ISO 20347		es	Product	Replacement insole	steel midsole	uvex xenova® midsole	uvex climazone	uvex xenova® toe cap	ESD	lacquer-neutral	uvex medicare	ÖNorm Z 1259	SympaTex®	BOA	Page
65657	uvex 1	S1 SRC		35 to 52	Perforated Shoe, width 10	95347											278
65658	uvex 1	S1 SRC		35 to 52	Perforated Shoe, width 11	95348											278
65659	uvex 1	S1 SRC		35 to 52	Perforated Shoe, width 12	95349											278
65667	uvex 1	S2 SRC		35 to 52	Shoe, width 10	95347											278
65668	uvex 1	S2 SRC		35 to 52	Shoe, width 11	95348											278
65669	uvex 1	S2 SRC		35 to 52	Shoe, width 12	95349											278
65671	uvex 1 x-tended support	S3 SRC		35 to 52	Shoe, width 10	95347											287
65672	uvex 1 x-tended support	S3 SRC		35 to 52	Shoe, width 11	95348											287
65673	uvex 1 x-tended support	S3 SRC		35 to 52	Shoe, width 12	95349											287
65681	uvex 1 x-tended support	S1 P SRC		35 to 52	Perforated Shoe, width 10	95347											287
65682	uvex 1 x-tended support	S1 P SRC		35 to 52	Perforated Shoe, width 11	95348											287
65683	uvex 1 x-tended support	S1 P SRC		35 to 52	Perforated Shoe, width 12	95349											287
65807	uvex 1 sport hygiene	S2 SRC		35 to 52	Shoe, width 10	95797											298
65808	uvex 1 sport hygiene	S2 SRC		35 to 52	Shoe, width 11	95798											298
65809	uvex 1 sport hygiene	S2 SRC		35 to 52	Shoe, width 12	95799											298
65817	uvex 1 sport hygiene	S2 SRC		35 to 52	Shoe, width 10	95797											298
65818	uvex 1 sport hygiene	S2 SRC		35 to 52	Shoe, width 11	95798											298
65819	uvex 1 sport hygiene	S2 SRC		35 to 52	Shoe, width 12	95799											298
65821	uvex 1 sport hygiene	S3 SRC		35 to 52	Shoe, width 10	95797											298
65822	uvex 1 sport hygiene	S3 SRC		35 to 52	Shoe, width 11	95798											298
65823	uvex 1 sport hygiene	S3 SRC		35 to 52	Shoe, width 12	95799											298
65901	uvex 1 sport	S1 P SRC		35 to 52	Shoe, width 10	95797											296
65902	uvex 1 sport	S1 P SRC		35 to 52	Shoe, width 11	95798											296
65903	uvex 1 sport	S1 P SRC		35 to 52	Shoe, width 12	95799											296
65904	uvex 1 sport	S1 P SRC		35 to 52	Shoe, width 14	95790											296
65921	uvex 1 sport	S3 SRC		35 to 52	Shoe, width 10	95797											296
65922	uvex 1 sport	S3 SRC		35 to 52	Shoe, width 11	95798											296
65923	uvex 1 sport	S3 SRC		35 to 52	Shoe, width 12	95799											296
65924	uvex 1 sport	S3 SRC		35 to 52	Shoe, width 14	95790											296
65937	uvex 1 sport NC	O1 FO SRC		35 to 52	Shoe, width 10	95177											297
65938	uvex 1 sport NC	O1 FO SRC		35 to 52	Shoe, width 11	95178											297
65939	uvex 1 sport NC	O1 FO SRC		35 to 52	Shoe, width 12	95179											297
65940	uvex 1 sport	S1 SRC		35 to 52	Shoe, width 14	95790											295
65941	uvex 1 sport	S1 P SRC		35 to 52	Shoe, width 10	95797											295
65942	uvex 1 sport	S1 P SRC		35 to 52	Shoe, width 11	95798											295
65943	uvex 1 sport	S1 P SRC		35 to 52	Shoe, width 12	95799											295
65944	uvex 1 sport	S1 P SRC		35 to 52	Shoe, width 14	95790											295
65947	uvex 1 sport	S1 SRC		35 to 52	Shoe, width 10	95797											295
65948	uvex 1 sport	S1 SRC		35 to 52	Shoe, width 11	95798											295
65949	uvex 1 sport	S1 SRC		35 to 52	Shoe, width 12	95799											295
65957	uvex 1 sport NC	O1 FO SRC		35 to 52	Shoe, width 10	95177											297
65958	uvex 1 sport NC	O1 FO SRC		35 to 52	Shoe, width 11	95178											297
65959	uvex 1 sport NC	O1 FO SRC		35 to 52	Shoe, width 12	95179											297
65961	uvex 1 sport	S3 SRC		35 to 52	Shoe, width 10	95797											295
65962	uvex 1 sport	S3 SRC		35 to 52	Shoe, width 11	95798											295
65963	uvex 1 sport	S3 SRC		35 to 52	Shoe, width 12	95799											295
65964	uvex 1 sport	S3 SRC		35 to 52	Shoe, width 14	95790											295
65971	uvex 1 sport	S1 P SRC		35 to 43	Shoe, width 10	95797											294
65972	uvex 1 sport	S1 P SRC		35 to 43	Shoe, width 11	95798											294
65973	uvex 1 sport	S1 P SRC		35 to 43	Shoe, width 12	95799											294
65974	uvex 1 sport	S1 P SRC		35 to 43	Shoe, width 14	95790											294
65980	uvex 1 sport	S1 SRC		35 to 52	Shoe, width 14	95790											294
65987	uvex 1 sport	S1 SRC		35 to 52	Shoe, width 10	95797											294
65988	uvex 1 sport	S1 SRC		35 to 52	Shoe, width 11	95798											294
65989	uvex 1 sport	S1 SRC		35 to 52	Shoe, width 12	95799											294
65991	uvex 1 sport	S1 P SRC		35 to 52	Shoe, width 10	95797											294
65992	uvex 1 sport	S1 P SRC		35 to 52	Shoe, width 11	95798											294
65993	uvex 1 sport	S1 P SRC		35 to 52	Shoe, width 12	95799											294
65994	uvex 1 sport	S1 P SRC		35 to 52	Shoe, width 14	95790											294
68341	uvex 1 G2	S1 P SRC		35 to 52	Shoe, width 10	84900											271
68342	uvex 1 G2	S1 P SRC		35 to 52	Shoe, width 11	84907											271
68343	uvex 1 G2	S1 P SRC		35 to 52	Shoe, width 12	84908											271
68344	uvex 1 G2	S1 P SRC		35 to 52	Shoe, width 14	84909											271
68361	uvex 1 G2	S1 P SRC		35 to 52	Sandal, width 10	84900											272
68362	uvex 1 G2	S1 P SRC		35 to 52	Sandal, width 11	84907											272
68363	uvex 1 G2	S1 P SRC		35 to 52	Sandal, width 12	84908											272
68364	uvex 1 G2	S1 P SRC		35 to 52	Sandal, width 14	84909											272
68371	uvex 1 G2	S1 P SRC		35 to 52	Perforated Shoe, width 10	84900											272
68372	uvex 1 G2	S1 P SRC		35 to 52	Perforated Shoe, width 11	84907											272
68373	uvex 1 G2	S1 P SRC		35 to 52	Perforated Shoe, width 12	84908											272
68374	uvex 1 G2	S1 P SRC		35 to 52	Perforated Shoe, width 14	84909											272
68381	uvex 1 G2	S3 SRC		35 to 52	Shoe, width 10	84900											273
68382	uvex 1 G2	S3 SRC		35 to 52	Shoe, width 11	84907											273
68383	uvex 1 G2	S3 SRC		35 to 52	Shoe, width 12	84908											273
68384	uvex 1 G2	S3 SRC		35 to 52	Shoe, width 14	84909											273
68391	uvex 1 G2	S3 SRC		35 to 52	Lace-up boot, width 10	84900											273
68392	uvex 1 G2	S3 SRC		35 to 52	Lace-up boot, width 11	84907											273
68393	uvex 1 G2	S3 SRC		35 to 52	Lace-up boot, width 12	84908											273
68394	uvex 1 G2	S3 SRC		35 to 52	Lace-up boot, width 14	84909											273
68401	uvex 1 G2	S3 SRC		35 to 52	Shoe, width 10	84900											273
68402	uvex 1 G2	S3 SRC		35 to 52	Shoe, width 11	84907											273
68403	uvex 1 G2	S3 SRC		35 to 52	Shoe, width 12	84908											273

You can find more information on uvex medicare on pages 411 to 421



Safety Footwear

Overview

Art. no.	Collection	EN ISO 20345	Sizes	Product	Replacement insole											Page
						steel midsole	uvex xenova® midsole	uvex climazone	uvex xenova® toe cap	ESD	lacquer-neutral	uvex medicare	ÖNorm Z 1259	SympaTex®	BOA	
68420	uvex 1 G2	S1 SRC	35 to 52	Sandal, width 14	84900											270
68427	uvex 1 G2	S1 SRC	35 to 52	Sandal, width 10	84907											270
68428	uvex 1 G2	S1 SRC	35 to 52	Sandal, width 11	84908											270
68429	uvex 1 G2	S1 SRC	35 to 52	Sandal, width 12	84909											270
68430	uvex 1 G2	S1 SRC	35 to 52	Perforated Shoe, width 14	84900											270
68437	uvex 1 G2	S1 SRC	35 to 52	Perforated Shoe, width 10	84907											270
68438	uvex 1 G2	S1 SRC	35 to 52	Perforated Shoe, width 11	84908											270
68439	uvex 1 G2	S1 SRC	35 to 52	Perforated Shoe, width 12	84909											270
68440	uvex 1 G2	S2 SRC	35 to 52	Shoe, width 14	84900											270
68447	uvex 1 G2	S2 SRC	35 to 52	Shoe, width 10	84907											270
68448	uvex 1 G2	S2 SRC	35 to 52	Shoe, width 11	84908											270
68449	uvex 1 G2	S2 SRC	35 to 52	Shoe, width 12	84909											270
68450	uvex 1 G2	S2 SRC	35 to 52	Lace-up Boot, width 14	84900											270
68457	uvex 1 G2	S2 SRC	35 to 52	Lace-up Boot, width 10	84907											270
68458	uvex 1 G2	S2 SRC	35 to 52	Lace-up Boot, width 11	84908											270
68459	uvex 1 G2	S2 SRC	35 to 52	Lace-up Boot, width 12	84909											270
68460	uvex 1 G2	S1 SRC	35 to 52	Perforated Shoe, width 14	84900											268
68467	uvex 1 G2	S1 SRC	35 to 52	Perforated Shoe, width 10	84907											268
68468	uvex 1 G2	S1 SRC	35 to 52	Perforated Shoe, width 11	84908											268
68469	uvex 1 G2	S1 SRC	35 to 52	Perforated Shoe, width 12	84909											268
68470	uvex 1 G2	S1 SRC	35 to 52	Perforated Lace-up Boot, width 14	84900											268
68477	uvex 1 G2	S1 SRC	35 to 52	Perforated Lace-up Boot, width 10	84907											268
68478	uvex 1 G2	S1 SRC	35 to 52	Perforated Lace-up Boot, width 11	84908											268
68479	uvex 1 G2	S1 SRC	35 to 52	Perforated Lace-up Boot, width 12	84909											268
68480	uvex 1 G2	S1 SRC	35 to 52	Sandal, width 14	84900											268
68487	uvex 1 G2	S1 SRC	35 to 52	Sandal, width 10	84907											268
68488	uvex 1 G2	S1 SRC	35 to 52	Sandal, width 11	84908											268
68489	uvex 1 G2	S1 SRC	35 to 52	Sandal, width 12	84909											268
68490	uvex 1 G2	S2 SRC	35 to 52	Shoe, width 14	84900											269
68497	uvex 1 G2	S2 SRC	35 to 52	Shoe, width 10	84907											269
68498	uvex 1 G2	S2 SRC	35 to 52	Shoe, width 11	84908											269
68499	uvex 1 G2	S2 SRC	35 to 52	Shoe, width 12	84909											269
68500	uvex 1 G2	S2 SRC	35 to 52	Lace-up Boot, width 14	84900											269
68507	uvex 1 G2	S2 SRC	35 to 52	Lace-up Boot, width 10	84907											269
68508	uvex 1 G2	S2 SRC	35 to 52	Lace-up Boot, width 11	84908											269
68509	uvex 1 G2	S2 SRC	35 to 52	Lace-up Boot, width 12	84909											269
69061	uvex 2 trend	S1 P SRC	38 to 52	Sandal, width 10	95187											333
69062	uvex 2 trend	S1 P SRC	38 to 52	Sandal, width 11	95188											333
69063	uvex 2 trend	S1 P SRC	38 to 52	Sandal, width 12	95189											333
69077	uvex 2 trend	S1 SRC	38 to 52	Perforated Shoe, width 10	95187											334
69078	uvex 2 trend	S1 SRC	38 to 52	Perforated Shoe, width 11	95188											334
69079	uvex 2 trend	S1 SRC	38 to 52	Perforated Shoe, width 12	95189											334
69081	uvex 2 trend	S1 P SRC	38 to 52	Perforated Shoe, width 10	95187											335
69082	uvex 2 trend	S1 P SRC	38 to 52	Perforated Shoe, width 11	95188											335
69083	uvex 2 trend	S1 P SRC	38 to 52	Perforated Shoe, width 12	95189											335
69097	uvex 2 trend	S2 SRC	38 to 52	Shoe, width 10	95187											336
69098	uvex 2 trend	S2 SRC	38 to 52	Shoe, width 11	95188											336
69099	uvex 2 trend	S2 SRC	38 to 52	Shoe, width 12	95189											336
69341	uvex 2 trend	S3 SRC	36 to 52	Shoe, width 10	95187											337
69342	uvex 2 trend	S3 SRC	36 to 52	Shoe, width 11	95188											337
69343	uvex 2 trend	S3 SRC	36 to 52	Shoe, width 12	95189											337
69347	uvex 2 trend	S2 SRC	36 to 52	Shoe, width 10	95187											337
69348	uvex 2 trend	S2 SRC	36 to 52	Shoe, width 11	95188											337
69349	uvex 2 trend	S2 SRC	36 to 52	Shoe, width 12	95189											337
69351	uvex 2 trend	S3 SRC	36 to 52	Lace-up boot, width 10	95187											337
69352	uvex 2 trend	S3 SRC	36 to 52	Lace-up boot, width 11	95188											337
69353	uvex 2 trend	S3 SRC	36 to 52	Lace-up boot, width 12	95189											337
69357	uvex 2 trend	S2 SRC	36 to 52	Lace-up boot, width 10	95187											337
69358	uvex 2 trend	S2 SRC	36 to 52	Lace-up boot, width 11	95188											337
69359	uvex 2 trend	S2 SRC	36 to 52	Lace-up boot, width 12	95189											337
69361	uvex 2 trend	S1 P SRC	36 to 52	Sandal, width 10	95187											333
69362	uvex 2 trend	S1 P SRC	36 to 52	Sandal, width 11	95188											333
69363	uvex 2 trend	S1 P SRC	36 to 52	Sandal, width 12	95189											333
69367	uvex 2 trend	S1 SRC	36 to 52	Sandal, width 10	95187											332
69368	uvex 2 trend	S1 SRC	36 to 52	Sandal, width 11	95188											332
69369	uvex 2 trend	S1 SRC	36 to 52	Sandal, width 12	95189											332
69377	uvex 2 trend	S1 SRC	36 to 52	Perforated Shoe, width 10	95187											334
69378	uvex 2 trend	S1 SRC	36 to 52	Perforated Shoe, width 11	95188											334
69379	uvex 2 trend	S1 SRC	36 to 52	Perforated Shoe, width 12	95189											334
69381	uvex 2 trend	S1 P SRC	36 to 52	Perforated Shoe, width 10	95187											335
69382	uvex 2 trend	S1 P SRC	36 to 52	Perforated Shoe, width 11	95188											335
69383	uvex 2 trend	S1 P SRC	36 to 52	Perforated Shoe, width 12	95189											335
69397	uvex 2 trend	S2 SRC	36 to 52	Shoe, width 10	95187											336
69398	uvex 2 trend	S2 SRC	36 to 52	Shoe, width 11	95188											336
69399	uvex 2 trend	S2 SRC	36 to 52	Shoe, width 12	95189											336
69461	uvex 2 trend	S1 P SRC	38 to 52	Sandal, width 10	95187											333
69462	uvex 2 trend	S1 P SRC	38 to 52	Sandal, width 11	95188											333
69463	uvex 2 trend	S1 P SRC	38 to 52	Sandal, width 12	95189											333
69477	uvex 2 trend	S1 SRC	38 to 52	Perforated Shoe, width 10	95187											334
69478	uvex 2 trend	S1 SRC	38 to 52	Perforated Shoe, width 11	95188											334

You can find more information on uvex medicare on pages 411 to 421

Art. no.	Collection	EN ISO 20345	Sizes	Product	Replacement insole											Page
						steel midsole	uvex xenova® midsole	uvex climazone	uvex xenova® toe cap	ESD	lacquer-neutral	uvex medicare	ÖNorm Z 1259	SympaTex®	BOA	
69479	uvex 2 trend	S1 SRC	38 to 52	Perforated Shoe, width 12	95189											334
69497	uvex 2 trend	S2 SRC	38 to 52	Shoe, width 10	95187											336
69498	uvex 2 trend	S2 SRC	38 to 52	Shoe, width 11	95188											336
69499	uvex 2 trend	S2 SRC	38 to 52	Shoe, width 12	95189											336
69788	uvex motion style	S2 SRC	36 to 50	Shoe	95956											299
69798	uvex motion style	S2 SRC	36 to 50	Lace-up boot	95956											299
69898	uvex motion style	S1 SRC	36 to 50	Perforated Shoe	95956											299
69988	uvex motion style	S1 SRC	36 to 50	Perforated Shoe	95956											299
84002	uvex quatro pro	S3 SRC	38 to 50	Shoe	95954											340
84012	uvex quatro pro	S3 SRC	38 to 50	Lace-up boot	95954											340
84022	uvex quatro pro	S3 CI SRC	38 to 50	Winter lace-up boot	95954											341
84032	uvex quatro pro	S3 CI SRC	38 to 50	Zip-up winter boot	95954											341
84039	uvex quatro pro	S2 CI SRC	38 to 50	Zip-up winter boot	95954											341
84062	uvex quatro STX	S3 WR HI CI HRO SRC	38 to 48	Shoe, width 11	95954											339
84072	uvex quatro STX	S3 WR HI CI HRO SRC	38 to 48	Lace-up boot, width 11												339
84261	uvex 1 business	S3 SRC	39 to 52	Lace-up boot, width 10	95157											303
84262	uvex 1 business	S3 SRC	39 to 52	Lace-up boot, width 11	95158											303
84263	uvex 1 business	S3 SRC	39 to 52	Lace-up boot, width 12	95179											303
84271	uvex 1 business	S3 SRC	39 to 52	Lace-up boot, width 10	95157											303
84272	uvex 1 business	S3 SRC	39 to 52	Lace-up boot, width 11	95178											303
84273	uvex 1 business	S3 SRC	39 to 52	Lace-up boot, width 12	95159											303
84281	uvex 1 business	S3 SRC	39 to 52	Shoe, width 10	95157											302
84282	uvex 1 business	S3 SRC	39 to 52	Shoe, width 11	95158											302
84283	uvex 1 business	S3 SRC	39 to 52	Shoe, width 12	95179											302
84697	uvex 1 business	S2 SRC	39 to 52	Shoe, width 10	95347											302
84698	uvex 1 business	S2 SRC	39 to 52	Shoe, width 11	95348											302
84699	uvex 1 business	S2 SRC	39 to 52	Shoe, width 12	95159											302
85117	uvex 1 x-tended support	S1 SRC	35 to 52	Perforated Shoe, width 10	95347											284
85118	uvex 1 x-tended support	S1 SRC	35 to 52	Perforated Shoe, width 11	95348											284
85119	uvex 1 x-tended support	S1 SRC	35 to 52	Perforated Shoe, width 12	95349											284
85127	uvex 1 x-tended support	S1 SRC	35 to 52	Perforated Shoe, width 10	95347											284
85128	uvex 1 x-tended support	S1 SRC	35 to 52	Perforated Shoe, width 11	95348											284
85129	uvex 1 x-tended support	S1 SRC	35 to 52	Perforated Shoe, width 12	95349											284
85141	uvex 1 x-tended support	S1 P SRC	35 to 52	Perforated Shoe, width 10	95347											285
85142	uvex 1 x-tended support	S1 P SRC	35 to 52	Perforated Shoe, width 11	95348											285
85143	uvex 1 x-tended support	S1 P SRC	35 to 52	Perforated Shoe, width 12	95349											285
85161	uvex 1 x-tended support	S3 SRC	35 to 52	Shoe, width 10	95347											286
85162	uvex 1 x-tended support	S3 SRC	35 to 52	Shoe, width 11	95348											286
85163	uvex 1 x-tended support	S3 SRC	35 to 52	Shoe, width 12	95349											286
85171	uvex 1 x-tended support	S3 SRC	35 to 52	Lace-up boot, width 10	95347											286
85172	uvex 1 x-tended support	S3 SRC	35 to 52	Lace-up boot, width 11	95348											286
85173	uvex 1 x-tended support	S3 SRC	35 to 52	Lace-up boot, width 12	95349											286
85191	uvex 1 x-tended support	S1 P SRC	35 to 52	Perforated Shoe, width 10	95347											285
85192	uvex 1 x-tended support	S1 P SRC	35 to 52	Perforated Shoe, width 11	95348											285
85193	uvex 1 x-tended support	S1 P SRC	35 to 52	Perforated Shoe, width 12	95349											285
85307	uvex 1	S1 SRC	35 to 52	Sandal, width 10	95347											280
85308	uvex 1	S1 SRC	35 to 52	Sandal, width 11	95348											280
85309	uvex 1	S1 SRC	35 to 52	Sandal, width 12	95349											280
85310	uvex 1	S1 SRC	35 to 52	Perforated Shoe, width 14	95340											281
85317	uvex 1	S1 SRC	35 to 52	Perforated Shoe, width 10	95347											281
85318	uvex 1	S1 SRC	35 to 52	Perforated Shoe, width 11	95348											281
85319	uvex 1	S1 SRC	35 to 52	Perforated Shoe, width 12	95349											281
85320	uvex 1	S1 SRC	35 to 52	Perforated Lace-up boot, width 14	95340											281
85327	uvex 1	S1 SRC	35 to 52	Perforated Lace-up boot, width 10	95347											281
85328	uvex 1	S1 SRC	35 to 52	Perforated Lace-up boot, width 11	95348											281
85329	uvex 1	S1 SRC	35 to 52	Perforated Lace-up boot, width 12	95349											281
85340	uvex 1	S2 SRC	35 to 52	Shoe, width 14	95340											280
85347	uvex 1	S2 SRC	35 to 52	Shoe, width 10	95347											280
85348	uvex 1	S2 SRC	35 to 52	Shoe, width 11	95348											280
85349	uvex 1	S2 SRC	35 to 52	Shoe, width 12	95349											280
85361	uvex 1 x-tended support	S1 P SRC	35 to 52	Sandal, width 10	95347											286
85362	uvex 1 x-tended support	S1 P SRC	35 to 52	Sandal, width 11	95348											286
85363	uvex 1 x-tended support	S1 P SRC	35 to 52	Sandal, width 12	95349											286
85420	uvex 1	S1 SRC	35 to 52	Sandal, width 14	95340											276
85427	uvex 1	S1 SRC	35 to 52	Sandal, width 10	95347											276
85428	uvex 1	S1 SRC	35 to 52	Sandal, width 11	95348											276
85429	uvex 1	S1 SRC	35 to 52	Sandal, width 12	95349											276
85430	uvex 1	S1 SRC	35 to 52	Perforated Shoe, width 14	95340											276
85437	uvex 1	S1 SRC	35 to 52	Perforated Shoe, width 10	95347											276
85438	uvex 1	S1 SRC	35 to 52	Perforated Shoe, width 11	95348											276
85439	uvex 1	S1 SRC	35 to 52	Perforated Shoe, width 12	95349											276
85440	uvex 1	S2 SRC	35 to 52	Shoe, width 14	95340											277
85447	uvex 1	S2 SRC	35 to 52	Shoe, width 10	95347											277
85448	uvex 1	S2 SRC	35 to 52	Shoe, width 11	95348											277
85449	uvex 1	S2 SRC	35 to 52	Shoe, width 12	95349											277
85450	uvex 1	S2 SRC	35 to 52	Lace-up boot, width 14	95340											277
85457	uvex 1	S2 SRC	35 to 52	Lace-up boot, width 10	95347											277
85458	uvex 1	S2 SRC	35 to 52	Lace-up boot, width 11	95348											277
85459	uvex 1	S2 SRC	35 to 52	Lace-up boot, width 12	95349											277
85467	uvex 1	S1 SRC	35 to 52	Perforated Shoe, width 10	95347											279



Safety Footwear

Overview

Art. no.	Collection	EN ISO 20345	Sizes	Product	Replacement insole											Page
						steel midsole	uvex xenova® midsole	uvex climazone	uvex xenova® toe cap	ESD	lacquer-neutral	uvex medicare	ÖNorm Z 1259	SympaTex®	BOA	
85468	uvex 1	S1 SRC	35 to 52	Perforated Shoe, width 11	95348											279
85469	uvex 1	S1 SRC	35 to 52	Perforated Shoe, width 12	95349											279
85477	uvex 1	S1 SRC	35 to 52	Perforated Lace-up boot, width 10	95347											279
85478	uvex 1	S1 SRC	35 to 52	Perforated Lace-up boot, width 11	95348											279
85479	uvex 1	S1 SRC	35 to 52	Perforated Lace-up boot, width 12	95349											279
85521	uvex 1	S3 SRC	35 to 52	Shoe, width 10	95347											290
85522	uvex 1	S3 SRC	35 to 52	Shoe, width 11	95348											290
85523	uvex 1	S3 SRC	35 to 52	Shoe, width 12	95349											290
85524	uvex 1	S3 SRC	35 to 52	Shoe, width 14	95340											290
85551	uvex 1	S3 SRC	35 to 52	Lace-up boot, width 10	95347											290
85552	uvex 1	S3 SRC	35 to 52	Lace-up boot, width 11	95348											290
85553	uvex 1	S3 SRC	35 to 52	Lace-up boot, width 12	95349											290
85554	uvex 1	S3 SRC	35 to 52	Lace-up boot, width 14	95340											290
85607	uvex 1 ladies	S1 SRC	35 to 43	Sandal, width 10	95347											288
85608	uvex 1 ladies	S1 SRC	35 to 43	Sandal, width 11	95348											288
85617	uvex 1 ladies	S1 SRC	35 to 43	Perforated Shoe, width 10	95347											289
85618	uvex 1 ladies	S1 SRC	35 to 43	Perforated Shoe, width 11	95348											289
85627	uvex 1 ladies	S2 SRC	35 to 43	Shoe, width 10	95347											288
85628	uvex 1 ladies	S2 SRC	35 to 43	Shoe, width 11	95348											288
85647	uvex 1 ladies	S1 SRC	35 to 43	Perforated Lace-up boot, width 10	95347											289
85648	uvex 1 ladies	S1 SRC	35 to 43	Perforated Lace-up boot, width 11	95348											289
94756	Accessories	S5 SRC	37 to 48	PVC safety boot, yellow	-											347
94766	Accessories	S5 SRC	36 to 47	PVC safety boot, white	-											347
94900	Inlay soles		35 to 52	Comfortable climatic insole uvex 1 G2, width 14	-											343
94907	Inlay soles		35 to 52	Comfortable climatic insole uvex 1 G2, width 10	-											343
94908	Inlay soles		35 to 52	Comfortable climatic insole uvex 1 G2, width 11	-											343
94909	Inlay soles		35 to 52	Comfortable climatic insole uvex 1 G2, width 12	-											343
95041	uvex 2 xenova®	S1 P SRC	38 to 52	Sandal, width 10	95347											322
95042	uvex 2 xenova®	S1 P SRC	38 to 52	Sandal, width 11	95348											322
95043	uvex 2 xenova®	S1 P SRC	38 to 52	Sandal, width 12	95349											322
95047	uvex 2 xenova®	S1 SRC	38 to 52	Sandal, width 10	95347											321
95048	uvex 2 xenova®	S1 SRC	38 to 52	Sandal, width 11	95348											321
95049	uvex 2 xenova®	S1 SRC	38 to 52	Sandal, width 12	95349											321
95057	uvex 2 xenova®	S1 SRC	38 to 52	Perforated Shoe, width 10	95347											323
95058	uvex 2 xenova®	S1 SRC	38 to 52	Perforated Shoe, width 11	95348											323
95059	uvex 2 xenova®	S1 SRC	38 to 52	Perforated Shoe, width 12	95349											323
95061	uvex 2 xenova®	S3 SRC	38 to 52	Shoe, width 10	95347											328
95062	uvex 2 xenova®	S3 SRC	38 to 52	Shoe, width 11	95348											328
95063	uvex 2 xenova®	S3 SRC	38 to 52	Shoe, width 12	95349											328
95067	uvex 2 xenova®	S2 SRC	38 to 52	Shoe, width 10	95347											326
95068	uvex 2 xenova®	S2 SRC	38 to 52	Shoe, width 11	95348											326
95069	uvex 2 xenova®	S2 SRC	38 to 52	Shoe, width 12	95349											326
95071	uvex 2 xenova®	S3 SRC	38 to 52	Lace-up boot, width 10	95347											329
95072	uvex 2 xenova®	S3 SRC	38 to 52	Lace-up boot, width 11	95348											329
95073	uvex 2 xenova®	S3 SRC	38 to 52	Lace-up boot, width 12	95349											329
95077	uvex 2 xenova®	S2 SRC	38 to 52	Lace-up boot, width 10	95347											327
95078	uvex 2 xenova®	S2 SRC	38 to 52	Lace-up boot, width 11	95348											327
95079	uvex 2 xenova®	S2 SRC	38 to 52	Lace-up boot, width 12	95349											327
95087	uvex 2 xenova®	S2 SRC	38 to 52	Shoe, width 10	95347											325
95088	uvex 2 xenova®	S2 SRC	38 to 52	Shoe, width 11	95348											325
95089	uvex 2 xenova®	S2 SRC	38 to 52	Shoe, width 12	95349											325
95102	uvex business casual	S1 P SRC	38 to 48	Shoe	95388											304
95108	uvex business casual	S1 SRC	38 to 48	Shoe	95388											304
95112	uvex business casual	S1 P SRC	38 to 48	Shoe	95388											304
95122	uvex business casual	S1 P SRC	38 to 48	Shoe	95388											304
95128	uvex business casual	S1 SRC	38 to 48	Shoe	95388											304
95157	Inlay soles		39 to 52	Comfortable insole uvex 1 business, width 10	-											344
95158	Inlay soles		39 to 52	Comfortable insole uvex 1 business, width 11	-											344
95159	Inlay soles		39 to 52	Comfortable insole uvex 1 business, width 12	-											344
95177	Inlay soles		35 to 52	Comfortable insole uvex 1 sport NC, width 10	-											344
95178	Inlay soles		35 to 52	Comfortable insole uvex 1 sport NC, width 11	-											344
95179	Inlay soles		35 to 52	Comfortable insole uvex 1 sport NC, width 12	-											344
95187	Inlay soles		38 to 52	Comfortable insole uvex 2 trend, width 10	-											345
95188	Inlay soles		38 to 52	Comfortable insole uvex 2 trend, width 11	-											345
95189	Inlay soles		38 to 52	Comfortable insole uvex 2 trend, width 12	-											345
95281	Inlay soles		35 to 52	Comfortable insole uvex tune-up, low uvex 1, uvex 2, uvex 2 xenova®	-											342
95282	Inlay soles		35 to 52	Comfortable insole uvex tune-up, medium uvex 1, uvex 2, uvex 2 xenova®	-											342
95283	Inlay soles		35 to 52	Comfortable insole uvex tune-up, high uvex 1, uvex 2, uvex 2 xenova®	-											342
95284	Inlay soles		35 to 52	Comfortable insole uvex tune-up, low uvex 1 sport	-											342
95285	Inlay soles		35 to 52	Comfortable insole uvex tune-up, medium uvex 1 sport	-											342
95286	Inlay soles		35 to 52	Comfortable insole uvex tune-up, high uvex 1 sport	-											342
95287	Inlay soles		35 to 52	Comfortable insole uvex tune-up, low uvex 1 G2	-											342
95288	Inlay soles		35 to 52	Comfortable insole uvex tune-up, medium uvex 1 G2	-											342
95289	Inlay soles		35 to 52	Comfortable insole uvex tune-up, high uvex 1 G2	-											342
95340	Inlay soles		35 to 52	Comfortable climatic insole, width 14	-											343
95347	Inlay soles		35 to 52	Comfortable climatic insole, width 10	-											343
95348	Inlay soles		35 to 52	Comfortable climatic insole, width 11	-											343
95349	Inlay soles		35 to 52	Comfortable climatic insole, width 12	-											343
95388	Inlay soles		38 to 48	Comfortable climatic insole, width 11	-											345

Art. no.	Collection	EN ISO 20345	Sizes	Product	Replacement insole	steel midsole	uvex xenova® midsole	uvex climazone	uvex xenova® toe cap	ESD	lacquer-neutral	uvex medicare	ÖNorm Z 1259	SympaTex®	BOA	Page
95414	uvex office	S1 SRA	38 to 47	Shoe	-											305
95419	uvex office	S1 SRA	38 to 47	Shoe	-											305
95422	uvex office	S1 P SRA	38 to 47	Shoe	-											305
95531	uvex 2 xenova®	S1 P SRC	38 to 52	Sandal, width 10	95347											322
95532	uvex 2 xenova®	S1 P SRC	38 to 52	Sandal, width 11	95348											322
95533	uvex 2 xenova®	S1 P SRC	38 to 52	Sandal, width 12	95349											322
95537	uvex 2 xenova®	S1 SRC	38 to 52	Sandal, width 10	95347											321
95538	uvex 2 xenova®	S1 SRC	38 to 52	Sandal, width 11	95348											321
95539	uvex 2 xenova®	S1 SRC	38 to 52	Sandal, width 12	95349											321
95547	uvex 2 xenova®	S1 SRC	38 to 52	Perforated Shoe, width 10	95347											323
95548	uvex 2 xenova®	S1 SRC	38 to 52	Perforated Shoe, width 11	95348											323
95549	uvex 2 xenova®	S1 SRC	38 to 52	Perforated Shoe, width 12	95349											323
95551	uvex 2 xenova®	S3 SRC	38 to 52	Shoe, width 10	95347											328
95552	uvex 2 xenova®	S3 SRC	38 to 52	Shoe, width 11	95348											328
95553	uvex 2 xenova®	S3 SRC	38 to 52	Shoe, width 12	95349											328
95557	uvex 2 xenova®	S2 SRC	38 to 52	Shoe, width 10	95347											326
95558	uvex 2 xenova®	S2 SRC	38 to 52	Shoe, width 11	95348											326
95559	uvex 2 xenova®	S2 SRC	38 to 52	Shoe, width 12	95349											326
95561	uvex 2 xenova®	S3 SRC	38 to 52	Lace-up boot, width 10	95347											329
95562	uvex 2 xenova®	S3 SRC	38 to 52	Lace-up boot, width 11	95348											329
95563	uvex 2 xenova®	S3 SRC	38 to 52	Lace-up boot, width 12	95349											329
95567	uvex 2 xenova®	S2 SRC	38 to 52	Lace-up boot, width 10	95347											327
95568	uvex 2 xenova®	S2 SRC	38 to 52	Lace-up boot, width 11	95348											327
95569	uvex 2 xenova®	S2 SRC	38 to 52	Lace-up boot, width 12	95349											327
95577	uvex 2 xenova®	S2 SRC	38 to 52	Shoe, width 10	95347											325
95578	uvex 2 xenova®	S2 SRC	38 to 52	Shoe, width 11	95348											325
95579	uvex 2 xenova®	S2 SRC	38 to 52	Shoe, width 12	95349											325
95581	uvex 2 xenova®	S1 P SRC	38 to 52	Perforated Shoe, width 10	95347											324
95582	uvex 2 xenova®	S1 P SRC	38 to 52	Perforated Shoe, width 11	95348											324
95583	uvex 2 xenova®	S1 P SRC	38 to 52	Perforated Shoe, width 12	95349											324
95591	uvex 2 xenova®	S1 P SRC	38 to 52	Sandal, width 10	95347											322
95592	uvex 2 xenova®	S1 P SRC	38 to 52	Sandal, width 11	95348											322
95593	uvex 2 xenova®	S1 P SRC	38 to 52	Sandal, width 12	95349											322
95597	uvex 2 xenova®	S1 SRC	38 to 52	Sandal, width 10	95347											321
95598	uvex 2 xenova®	S1 SRC	38 to 52	Sandal, width 11	95348											321
95599	uvex 2 xenova®	S1 SRC	38 to 52	Sandal, width 12	95349											321
95607	uvex 2 xenova®	S1 SRC	38 to 52	Perforated Shoe, width 10	95347											323
95608	uvex 2 xenova®	S1 SRC	38 to 52	Perforated Shoe, width 11	95348											323
95609	uvex 2 xenova®	S1 SRC	38 to 52	Perforated Shoe, width 12	95349											323
95641	uvex 2 xenova®	S3 SRC	38 to 52	Shoe, width 10	95347											328
95642	uvex 2 xenova®	S3 SRC	38 to 52	Shoe, width 11	95348											328
95643	uvex 2 xenova®	S3 SRC	38 to 52	Shoe, width 12	95349											328
95647	uvex 2 xenova®	S2 SRC	38 to 52	Shoe, width 10	95347											326
95648	uvex 2 xenova®	S2 SRC	38 to 52	Shoe, width 11	95348											326
95649	uvex 2 xenova®	S2 SRC	38 to 52	Shoe, width 12	95349											326
95661	uvex 2 xenova®	S3 SRC	38 to 52	Lace-up boot, width 10	95347											329
95662	uvex 2 xenova®	S3 SRC	38 to 52	Lace-up boot, width 11	95348											329
95663	uvex 2 xenova®	S3 SRC	38 to 52	Lace-up boot, width 12	95349											329
95667	uvex 2 xenova®	S2 SRC	38 to 52	Lace-up boot, width 10	95347											327
95668	uvex 2 xenova®	S2 SRC	38 to 52	Lace-up boot, width 11	95348											327
95669	uvex 2 xenova®	S2 SRC	38 to 52	Lace-up boot, width 12	95349											327
95687	uvex 2 xenova®	S2 SRC	38 to 52	Shoe, width 10	95347											325
95688	uvex 2 xenova®	S2 SRC	38 to 52	Shoe, width 11	95348											325
95689	uvex 2 xenova®	S2 SRC	38 to 52	Shoe, width 12	95349											325
95790	Inlay soles		38 to 52	Comfortable climatic insole, width 14	-											343
95797	Inlay soles		35 to 52	Comfortable climatic insole, width 10	-											343
95798	Inlay soles		35 to 52	Comfortable climatic insole, width 11	-											343
95799	Inlay soles		35 to 52	Comfortable climatic insole, width 12	-											343
95954	Inlay soles		38 to 50	Comfortable climatic insole uvex 3D hydroflex® foam	-											345
95956	Inlay soles		35 to 50	Comfortable climatic insole uvex 3D hydroflex® foam	-											345
9698100	uvex nano shoe add on			Shoe impregnation	-											346
9698300	uvex nano shoe add in			Shoe disinfectant	-											346
98754	Accessories		39/40 to 47/48	Tricot liner socks	-											347



Safety categories in accordance with EN ISO 20345

SB Specification for safety shoes for industrial use with a toecap of 200 joules resistance

S1 Areas in which the effects of moisture are not expected to be a factor. Antistatic properties, energy absorption in the heel, the closed heel region and resistance to fuel and oil also required.

S2 Areas in which the effects of damp can also be expected. In addition to S1, also water-repellent (water-resistant) leather.

S3 Areas for S2 shoes in which penetration resistance and a treaded sole are also required.

S5 Wet areas in which penetration resistance and a treaded sole are also required.

You can find more information on uvex medicare on pages 411 to 421



You can find more information
at uvex-academy.com

This practical seminar will help you to analyse the dangers that employees face, determine what equipment is required to keep them safe and select the most appropriate protective footwear

- Basic information on the areas of application of PPE footwear
- Information on standards, the differences between primary and secondary requirements and their applications
- Description of the labels found on protective footwear and the meaning of the various codes
- Identification and assessment of dangers, developing a risk analysis strategy and understanding which safety equipment is necessary
- Information on materials, production processes and areas of application including:
 - Upper materials and lining
 - Soles
 - Protective toecaps
 - Penetration-resistant inlay
- Choosing the correct protective footwear for each application

Target group

Those responsible for the work-related health and safety of employees, e.g. health and safety officers, specialist purchasers and representatives of employee groups.



For more information or to book a place, please visit uvex-academy.de, call +49 (0)911 9736 1710 or email academy@uvex.de